

1000 ADMINISTRATION

<u>Number</u>	<u>Title</u>
1100	District Organization
1110	Organizational Chart
1120	Management Team
1130	Staff Liaison Committees
1140	Affirmative Action Program (M)
1210	Board-Chief School Administrator Relations
1220	Employment of Chief School Administrator (M)
1230	Chief School Administrator's Duties (M)
1240	Evaluation of Chief School Administrator (M)
1260	Incapacity of Chief School Administrator
1310	Employment of School Business Administrator/Board Secretary
1320	Duties of School Business Administrator/Board Secretary
1330	Evaluation of the School Business Administrator (M)
1331	Evaluation of the Board Secretary
1350	Incapacity of School Business Administrator/Board Secretary
1400	Job Descriptions (M)
1510	Americans with Disabilities Act (M)
1511	Board of Education Website Accessibility
1523	Comprehensive Equity Plan (M)
1530	Equal Employment Opportunities (M)
1540	Administrator's Code of Ethics
1550	Equal Employment/Anti-Discrimination Practices (M)
1570	Internal Controls (M)
1581	Domestic Violence (M)
1613	Disclosure and Review of Applicant's Employment History (M)
1620	Administrative Employment Contracts (M)
1631	Residency Requirement for Person Holding School District Office, Employment, or Position
1642	Earned sick Leave Law (M)
1648	Restart and Recovery Plan (M)
1648.02	Remote Learning Options for Families
1649	Federal Families First Coronavirus (COVID-19) Response Act (M)



REGULATION

NEPTUNE CITY BOARD OF EDUCATION

ADMINISTRATION
R 1000/page 1 of 1

R 1000 ADMINISTRATION

<u>Number</u>	<u>Title</u>
R 1240	Evaluation of Chief School Administrator (M)
R 1330	Evaluation of School Business Administrator (M)
R 1400	Job Descriptions (M)
R 1510	Americans with Disabilities Act (M)
R 1530	Equal Employment Opportunity Complaint Procedure (M)
R 1550	Equal Employment/Anti-Discrimination Practices (M)
R 1570	Internal Controls (M)
R 1581	Domestic Violence (M)
R 1613	Disclosure and Review of Applicant's Employment History (M)
R 1642	Earned Sick Leave Law (M)



1100 DISTRICT ORGANIZATION

The Board of Education directs the establishment and implementation of an organizational plan for the management and control of school district operations. The plan will require the identification and resolution of problems at appropriate organizational levels. All references to school district administrators in policies or regulations shall be construed to mean that administrator or his/her designee.

All members and employees of this Board are directed to observe faithfully the chain of communications established by the district organizational plan. In general, a problem should be identified and its resolution attempted at the level most immediate to the problem's origin. When a resolution cannot be found at that level, remedy may be sought through appropriate resolution and remediation procedures.

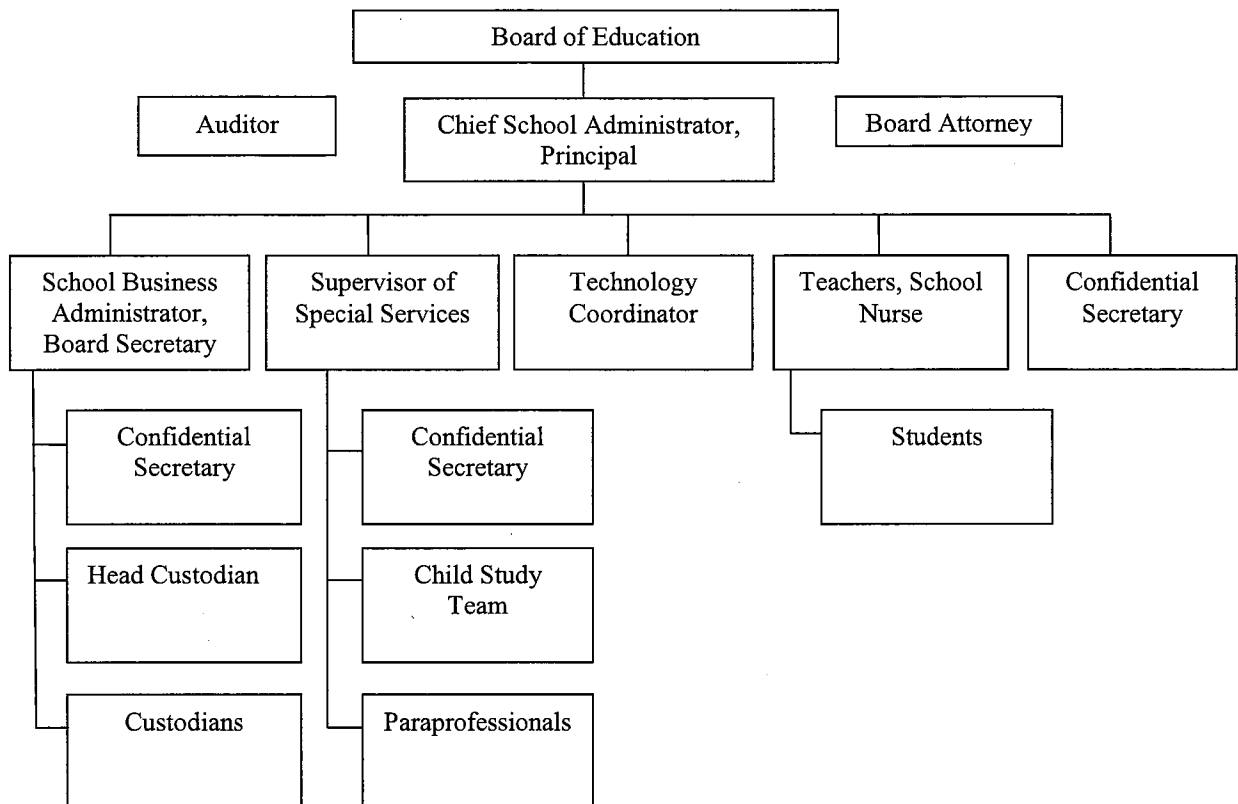
The Board expressly disapproves of any attempt to expedite the resolution of a problem by disregard of the organizational plan and the appropriate processes. A staff member's persistent disregard for the established management organization of this district in violation of this policy will be considered an act of insubordination subject to discipline.

N.J.S.A. 18:11-1; 18A:27-4

Adopted: 18 March 2021



1110 ORGANIZATIONAL CHART



Adopted: 18 March 2021



1120 MANAGEMENT TEAM

The Board of Education recognizes the value of a system of management organization that enhances communication among administrators and between the administration and the Board, encourages a shared responsibility for educational policy decisions, and provides for the equitable resolution of conflicts.

The Board directs the Chief School Administrator to establish a management team that includes the Chief School Administrator and those administrative, supervisory, and support staff members who are responsible for employee evaluation, the adjudication of grievances, supervision of employees, or recommendations regarding the employment of employees.

The Chief School Administrator shall institute a management team system that will provide a means for:

1. Submitting recommendations to the Board on issues of educational policy;
2. Addressing the economic concerns and working conditions of management team members, including their job descriptions, evaluation, salaries, fringe benefits, promotions, assignments, and transfers;
3. The development of administrative procedures; and
4. The consideration of such additional and appropriate issues as may be identified by the Chief School Administrator or the management team.

N.J.S.A. 18A:11-1; 18A:27-4

Adopted: 18 March 2021



1130 STAFF LIAISON COMMITTEES

The Board of Education encourages the Chief School Administrator to maintain close liaison with staff members in order to coordinate district programs and operations, to consult with appropriate staff members in developing administrative regulations and formulating recommendations for Board consideration, and to detect and resolve problems as they may arise.

The Chief School Administrator is authorized to establish such staff liaison committees as he/she may deem necessary.

No staff liaison committee can be delegated the authority to make decisions or take action that is reserved to the Board or the Chief School Administrator. Committee reports and recommendations may be advisory only.

Adopted: 18 March 2021



1140 AFFIRMATIVE ACTION PROGRAM

The Board of Education shall adopt and implement written educational equality and equity policies in accordance with the provisions of N.J.A.C. 6A:7 – Managing For Equality And Equity In Education.

The Board's affirmative action program shall recognize and value the diversity of persons and groups within society and promote the acceptance of persons of diverse backgrounds regardless of race, creed, color, national origin, ancestry, age, marital status, affectional or sexual orientation, gender, gender identity or expression, religion, disability, or socioeconomic status. The affirmative action program will also promote equal educational opportunity and foster a learning environment that is free from all forms of prejudice, discrimination, and harassment based upon race, creed, color, national origin, ancestry, age, marital status, affectional or sexual orientation, gender, gender identity or expression, religion, disability, or socioeconomic status in the policies, programs, and practices of the Board of Education.

The Board shall inform the school community it serves of these policies in a manner including, but not limited to, the district's customary methods of information dissemination. The Board shall develop a Comprehensive Equity Plan once every three years, which shall identify and correct all discriminatory and inequitable educational and hiring policies, patterns, programs, and practices affecting its facilities, programs, students, and staff.

The Board shall assess the district's needs for achieving equality and equity in educational programs based on an analysis of student performance data such as: National Assessment of Educational Progress and State assessment results, Pre-Kindergarten through grade twelve promotion/retention data, Pre-Kindergarten through grade twelve completion rates; re-examination and re-evaluation of classification and placement of students in special education programs if there is an over representation within certain groups; staffing practices; student demographic and behavioral data; quality of program data; and stakeholder satisfaction data prior to developing the Comprehensive Equity Plan. The purpose of the needs assessment is to identify and eliminate discriminatory practices and other barriers in achieving equality and equity in educational programs.

The Board shall annually designate a member of its staff as the Affirmative Action Officer and form an Affirmative Action Team, of whom the Affirmative Action Officer is a member, to coordinate and implement the requirements of N.J.A.C. 6A:7 – Managing For Equality And Equity in Education. The Board shall assure that all stakeholders know who the Affirmative Action Officer is and how to access him or her.



The Affirmative Action Officer shall have a New Jersey standard certification with an administrative, instructional, or educational services endorsement, pursuant to N.J.A.C. 6A:9B et seq. The Affirmative Action Officer shall: coordinate the required professional development training for certificated and non-certificated staff pursuant to N.J.A.C. 6A:7-1.6; notify all students and employees of district grievance procedures for handling discrimination complaints; and ensure the district grievance procedures, which include investigative responsibilities and reporting information, are followed.

The Affirmative Action Team shall: develop the Comprehensive Equity Plan pursuant to N.J.A.C. 6A:7-1.4(c); oversee the implementation of the district's Comprehensive Equity Plan pursuant to N.J.A.C. 6A:7-1.4(c); collaborate with the Affirmative Action Officer on coordination of the required professional development training for certificated and non-certificated staff pursuant to N.J.A.C. 6A:7-1.6; monitor the implementation of the Comprehensive Equity Plan; and conduct the annual district internal monitoring to ensure continuing compliance with State and Federal statutes governing educational equality and equity, pursuant to N.J.A.C. 6A:7-1.4(d).

The Board shall provide professional development training to all certificated and non-certificated school staff members on a continuing basis to identify and resolve problems associated with the student achievement gap and other inequities arising from prejudice on the basis of race, creed, color, national origin, ancestry, age, marital status, affectional or sexual orientation, gender, gender identity or expression, religion, disability, or socioeconomic status. All new certificated and non-certificated staff members shall be provided with professional development training on educational equality and equity issues within the first year of employment. Parents and other community members shall be invited to participate in the professional development training.

The Commissioner or his/her designee shall provide technical assistance to local school districts for the development of policy guidelines, procedures, and in-service training for Affirmative Action Officers so as to aid in the elimination of prejudice on the basis of race, creed, color, national origin, ancestry, age, marital status, affectional or sexual orientation, gender, gender identity or expression, religion, disability, or socioeconomic status.

N.J.A.C. 6A:7-1.4; 6A:7-1.5; 6A:7-1.6

Adopted: 18 March 2021



1210 BOARD-CHIEF SCHOOL ADMINISTRATOR RELATIONS

The Board of Education believes that it is the primary duty of the Board to establish policies and the primary duty of the Chief School Administrator to implement and administer those policies.

The Chief School Administrator is the primary professional advisor to the Board. Policy should not be adopted or revised without consultation with the Chief School Administrator.

The Chief School Administrator is responsible for the development, supervision, and operation of the school program and facilities and will be given latitude to implement and administer policies in accordance with such standards as may have been set forth in the policies. The Chief School Administrator will discharge his/her responsibility in part through the establishment and promulgation of administrative regulations.

In evaluating the effectiveness of Board policy in meeting the goals of the district, the Board will request the Chief School Administrator to make appropriate inquiries, investigations, and reports.

Adopted: 18 March 2021



1220 EMPLOYMENT OF CHIEF SCHOOL ADMINISTRATOR

The Board of Education vests the primary responsibility for the administration of this school district in a Chief School Administrator and recognizes the appointment of a person to that office is one of the most important functions this Board can perform. The Chief School Administrator shall have a seat on the Board of Education and the right to speak on matters at meetings of the Board (pursuant to N.J.S.A. 18A:17-20.a or N.J.S.A. 18A:17-20.b), but shall have no vote.

Recruitment Procedures

The Board shall actively seek the best qualified and most capable candidate for the position of Chief School Administrator. The Board may use a consultant service to assist in the recruitment process. Recruitment procedures may include, but are not limited to, the following activities:

1. The preparation of a new or a review of an existing written job description;
2. Preparation of informative material describing the school district and its educational goals and objectives;
3. Where feasible, the opportunity for applicants to visit the district;
4. Establish an interview process that encourages the candidate and the Board members to have a meaningful discussion of the school district's needs and expectations. The Board members shall review and discuss the candidate's credentials, qualifications, educational philosophy, and other qualities and expertise he/she can offer to the district;
5. Solicitation of applications from a wide geographical area; and
6. Strict compliance with law and Policy 1530 on equal employment opportunity.

Qualifications

The candidate must possess or be eligible for a valid New Jersey administrative certificate endorsed for school administrator or a provisional school administrator's endorsement in accordance with N.J.A.C. 6A:9B-12.4 et seq. and must qualify for employment following a criminal history record check.

The candidate shall meet criteria established by the Board.



Employment Contract

A person appointed Chief School Administrator must enter an employment contract with the Board. An employment contract for the Chief School Administrator shall be reviewed and approved by the Executive County Superintendent in accordance with the provisions of N.J.A.C. 6A:23A-3.1 and Policy 1620. Any actions by the Executive County Superintendent undertaken pursuant to N.J.A.C. 6A:23A-3.1 may be appealed to the Commissioner pursuant to the procedures set forth in N.J.A.C. 6A:3.

The employment contract with the Chief School Administrator must be approved with a recorded roll call majority vote of the full membership of the Board at a public Board meeting.

In the event there is a Chief School Administrator vacancy at the expiration of the existing contract, only the Board seated at the time of the expiration of the current Chief School Administrator's contract may appoint and approve an employment contract for the next Chief School Administrator.

In the event there is a Chief School Administrator vacancy prior to the expiration of the existing contract, the Board seated at the time the position becomes vacant may appoint and approve an employment contract for the next Chief School Administrator.

The contract for the Chief School Administrator who does not acquire tenure, but who holds tenure during the term of his/her employment contract will include: a term of not less than three nor more than five years and expiring July 1; a beginning and ending date; the salary to be paid and benefits to be received; a provision for termination of the contract by the Chief School Administrator; an evaluation process pursuant to N.J.S.A. 18A:17-20.3; and other terms agreed to between the Board and the Chief School Administrator.

During the term of the contract, the Chief School Administrator shall not be dismissed or reduced in compensation except for inefficiency, incapacity, conduct unbecoming a Chief School Administrator, or other just cause and only by the Commissioner of Education pursuant to the tenure hearing laws.

At the conclusion of the term of the initial contract or of any subsequent contract, in accordance with N.J.S.A. 18A:17-20.1, the Chief School Administrator shall be deemed reappointed for another contracted term of the same duration as the previous contract unless either: the Board by contract reappoints the Chief School Administrator for a different term which shall not be less than three nor more than five years, in which event reappointments thereafter shall be deemed for the new term unless a different term is again specified; or the Board notifies the Chief School Administrator in writing the Chief School Administrator will not be reappointed at the end of the



current term, in which event his/her employment shall cease at the expiration of that term. In the event the Board notifies the Chief School Administrator he/she will not be reappointed, the notification shall be given prior to the expiration of the first or any subsequent contract by a length of time equal to thirty days for each year in the term of the current contract.

Pursuant to N.J.S.A. 18A:20.2a, the Board shall submit to the Commissioner for prior approval an early termination of employment agreement that includes the payment of compensation as a condition of separation. In accordance with N.J.S.A. 18A:17-20.2a, compensation includes, but is not limited to, salary, allowances, bonuses and stipends, payments of accumulated sick or vacation leave, contributions toward the costs of health, dental, life, and other types of insurance, medical reimbursement plans, retirement plans, and any in-kind or other form of remuneration.

An early termination of an employment agreement shall be limited in its terms and conditions as outlined in N.J.A.C. 6A:23A-3.2. The Commissioner shall evaluate such agreements in accordance with the provisions of N.J.S.A. 18A:17-20.2a and N.J.A.C. 6A:23A-3.2 and has the authority to disapprove the agreement. The agreement shall be submitted to the Commissioner by the district by certified mail, return receipt requested. The determination shall be made within thirty days of the Commissioner's receipt of the agreement from the school district.

Disqualification

Any candidate's misstatement of fact material to qualifications for employment or the determination of salary will be considered by this Board to constitute grounds for dismissal.

Certificate Revocation

In accordance with N.J.A.C. 6A:23A-3.1(e)(12), in the event the Chief School Administrator's certificate is revoked, the Chief School Administrator's contract is null and void.

N.J.S.A. 18A:16-1; 18A:17-15; 18A:17-20; 18A:17-20.1;
18A:17-20.2; 18A:17-20.2a; 18A:17-20.3
N.J.A.C. 6A:9B-12.3; 6A:9B-12.4; 6A:23A-3.1; 6A:23A-3.2

Adopted: 18 March 2021



1230 CHIEF SCHOOL ADMINISTRATOR'S DUTIES

Function

The Chief School Administrator shall serve as Chief Executive and Administrative Officer of the district by implementing policies established by the Board of Education and by discharging the duties imposed on his/her office by law.

Authority

The Chief School Administrator shall be the Chief Executive and Administrative Officer of the school district and principle advisor to the Board. He/She may delegate to an appropriate school official any duty not reserved to the Chief School Administrator by law, but may not delegate the responsibility for duties mandated by law.

Work Relationships

The Chief School Administrator shall report directly to the Board and shall directly or indirectly supervise all persons employed by the Board.

Duties and Responsibilities

- A. In the discharge of his/her responsibility as principle advisor to the Board, the Chief School Administrator shall:
1. Ensure all aspects of district operation comply with Board policy, State law and district contracts;
 2. Report to the Board on the needs of the district;
 3. Advise the Board of any changes or additions that should be made to its policies;
 4. Provide the Board with such information as may be needed to ensure the making of informed decisions; and
 5. Perform such other duties as may be assigned by the Board.



- B. In the discharge of his/her responsibility for the implementation of the operational action plan of the district, the Chief School Administrator shall:
1. Prepare, promulgate, and maintain a manual of administrative regulations;
 2. Evaluate the future needs of the district and recommend a district action plan including goals, objectives, and priorities to the Board;
 3. Maintain written objectives to implement the district action plan adopted by the Board;
 4. Evaluate progress toward the attainment of the district action plan and report thereon to the Board; and
 5. Report to the Commissioner and the County Superintendent on or before August 1 of each year matters relating to the school in the manner and form prescribed by the Commissioner.
- C. In the discharge of his/her responsibility as the administrator of the instructional program, the Chief School Administrator shall:
1. Establish and maintain a written instructional plan for the district consistent with the educational goals adopted by the Board;
 2. Coordinate the proper implementation of the instructional plan as it applies to the district;
 3. Evaluate at least annually the effectiveness of the program of studies and recommend such changes and additions as may be required to improve its effectiveness;
 4. Evaluate the performance of students in relation to other public school districts, as well as in relation to State and national standards;
 5. Report periodically to the Board, as directed by the Board, on the condition of the educational program and facilities in the district; and
 6. Keep informed regarding current research in the field of education and inform the Board as appropriate.



- D. In the discharge of his/her responsibility for the direction and welfare of students, the Chief School Administrator shall:
1. Strive to motivate students to achieve their individual best;
 2. Create a climate of respect for authority and discipline in the district;
 3. Report to the Board at its next meeting the suspension of a student; and
 4. Recommend any changes in the program of student management and support as necessary to respond to district needs.
- E. In the discharge of his/her responsibility for the supervision of district employees, the Chief School Administrator shall:
1. Recommend to the Board all properly certified candidates for employment, assignment, or transfer;
 2. Assign staff so as to achieve maximum effectiveness in the attainment of educational goals;
 3. Train staff as necessary to implement approved changes in the curriculum or instructional methods of the district;
 4. Evaluate the effectiveness of staff members in the performance of their assigned tasks;
 5. Recommend changes in staffing patterns based on the evaluation of staff and program effectiveness; and
 6. Discipline staff as required and report to the Board forthwith any suspension of a teaching staff member.
- F. In the discharge of his/her responsibility for the maintenance of the physical plant, the Chief School Administrator shall:
1. Strive to make efficient use of district resources in the daily operations of the school;
 2. Assign support staff so as to achieve maximum effectiveness from the facilities of the district;



3. Train support staff as necessary to maintain the facilities and to avoid safety and environmental hazards; and
 4. Evaluate the effectiveness of the district facilities in housing the instructional program and recommend to the Board such changes and improvements as may be required.
- G. In the discharge of his/her responsibility for the management of the district business affairs, the Chief School Administrator shall:
1. Supervise the preparation of the annual budget and recommend its adoption to the Board;
 2. Implement the budget adopted by the Board;
 3. Establish sufficient fiscal controls to ensure that district funds are expended wisely and efficiently; and
 4. Report to the Board at its next meeting any expenditure in excess of a budgeted line item.
- H. In the discharge of his/her responsibility as liaison officer to the public, the Chief School Administrator shall:
1. Strive to interpret the needs of the school to the public and the concerns of the public to the Board;
 2. As appropriate, involve members of the public in the review of district needs, community needs, and the operation of the school programs;
 3. Keep the public informed about the accomplishments and challenges of the school district;
 4. Cooperate with the news media; and
 5. Work effectively with municipal government officials and public agencies concerned with the welfare of students.



Evaluation Criteria

The Chief School Administrator will be evaluated in accordance with Policy No. 1240 and this job description.

N.J.S.A. 18A:7A-11; 18A:17-17; 18A:17-18; 18A:17-20; 18A:17-21;
18A:22-8.1; 18A:27-4.1; 18A:37-4

N.J.A.C. 6A:8-3.1; 6A:32-4.1; 6A:32-12.2

Adopted: 18 March 2021



1240 EVALUATION OF CHIEF SCHOOL ADMINISTRATOR

The purpose of the annual evaluation is to promote professional excellence and improve the skills of the Chief School Administrator, improve the quality of the education received by the students in the school, and provide a basis for the review of the Chief School Administrator's performance.

This Policy and Regulation 1240 shall be developed by the Board of Education after consultation with the Chief School Administrator and shall include, but not be limited to:

1. Determination of roles and responsibilities for the implementation of the annual evaluation policy and procedures;
2. Development of a job description and evaluation criteria based upon the Board of Education's local goals, program objectives, policies, instructional priorities, State goals, statutory requirements, and the functions, duties, and responsibilities of the Chief School Administrator;
3. Specification of data collection and reporting methods appropriate to the job description;
4. Provisions for the preparation of an individual professional growth and development plan based in part upon any need(s) identified in the evaluation. The plan shall be mutually developed by the Board of Education and the Chief School Administrator; and
5. Preparation of an annual performance report by a majority of the full membership of the Board of Education and an annual summary conference between a majority of the total membership of the Board of Education and the Chief School Administrator.

There shall be an annual summary conference between the Board of Education, with a majority of its total membership present, and the Chief School Administrator which shall be held before the annual performance report is filed. The conference shall be held in executive session, unless the Chief School Administrator requests that it be held in public. The conference shall include, but not be limited to, review of the following:

1. Performance of the Chief School Administrator based upon the Board approved job description;



2. Progress of the Chief School Administrator in achieving and/or implementing the school district's goals, program objectives, policies, instructional priorities, State goals, and statutory requirements; and
3. Indicators of student progress and growth toward program objectives.

The annual performance report shall be prepared by July 1 by a majority of the Board of Education's total membership and shall include, but not be limited to:

1. Performance area(s) of strength;
2. Performance area(s) needing improvement based upon the job description and evaluation criteria set forth in N.J.A.C. 6A:10-8.1(c)2;
3. Recommendations for professional growth and development;
4. A summary of indicators of student progress and growth, and a statement of how the indicators relate to the effectiveness of the overall program and the Chief School Administrator's performance; and
5. Provision for performance data not included in the report to be entered into the record by the Chief School Administrator within ten teaching staff member working days after the report's completion.

The evaluation procedure for a nontenured Chief School Administrator shall be completed by July 1 each year.

Each newly appointed or elected Board of Education member shall complete a New Jersey School Boards Association training program on the evaluation of the Chief School Administrator within six months of the commencement of his or her term of office pursuant to N.J.S.A. 18A:17-20.3.b.

The rules in N.J.A.C. 6A:10-1.1 et seq. shall not override any conflicting provision(s) of a collective bargaining agreement or other employment contracts entered into by a school district in effect on July 1, 2013. No collective bargaining agreement entered into after July 1, 2013 shall conflict with the educator evaluation system established pursuant to N.J.A.C. 6A:10-1.1 et seq. or any other specific statute or regulation, nor shall topics subject to collective bargaining involve matters of educational policy or managerial prerogatives.



The Board of Education shall add to the Chief School Administrator's personnel file all annual performance reports and supporting data, including, but not limited to, indicators of student progress and growth. All information contained in the annual performance reports and all information collected, compiled, and/or maintained by employees of the Board of Education for the purposes of conducting the educator evaluation process pursuant to N.J.A.C. 6A:10-1.1 et seq. shall be confidential. Such information shall not be subject to public inspection or copying pursuant to the Open Public Records Act, N.J.S.A. 47:1A-1 et seq. Nothing contained in N.J.A.C. 6A:10-1.1 et seq. shall be construed to prohibit the New Jersey Department of Education from, at its discretion, collecting evaluation data pursuant to N.J.S.A. 18A:6-123.e or distributing aggregate statistics regarding evaluation data.

The Board President, or the Board President's designee, shall oversee the annual evaluation of the Chief School Administrator. The Board of Education may hire a qualified consultant to assist or advise in the evaluation process; however, the evaluation itself shall be the responsibility of the Board of Education.

Policy and Regulation 1240 shall be distributed to the Chief School Administrator upon adoption by the Board. Amendments to this Policy and Regulation shall be distributed within ten working days after adoption.

The provisions of this Policy, Regulation, and N.J.A.C. 6A:10-8.1 et seq. are the minimum requirements for the evaluation of a Chief School Administrator.

N.J.S.A. 18A:17-20.3; 18A:6-117 through 18A:6-129
N.J.A.C. 6A:10-1.1 et seq.; 6A:10-8.1 et seq.

Adopted: 18 March 2021



R 1240 EVALUATION OF CHIEF SCHOOL ADMINISTRATOR

- A. Roles and Responsibilities for the Implementation of the Annual Evaluation Policy and Procedures
1. The Board of Education and the Chief School Administrator will develop and the Board will adopt a job description and evaluation criteria for the Chief School Administrator's position based upon the Board's local goals, program objectives, policies, instructional priorities, State goals, statutory requirements, and the functions, duties, and responsibilities of the Chief School Administrator.
 2. The Chief School Administrator shall have primary responsibility for data collection and reporting methods appropriate to the job description.
 3. The Board President, or the Board President's designee, shall oversee the annual evaluation of the Chief School Administrator.
 4. The Board President shall establish timelines for completion of the annual evaluation of the Chief School Administrator.
- B. Annual Summary Conference
1. The Board of Education shall conduct an annual summary conference with the Chief School Administrator to develop and prepare an annual performance report.
 2. The annual summary conference between the Board of Education, with a majority of its total membership present, and the Chief School Administrator shall be held before the annual performance report is prepared and filed.
 3. The Chief School Administrator shall submit to all Board members any information, documents, statistics, or any other data or information he/she would like for the Board members to consider at the annual summary conference.
 4. The Board President, or the Board President's designee, shall preside over the Board's annual summary conference meeting.
 5. The conference shall be held in executive session, unless the Chief School Administrator requests it be held in public. The conference shall include, but not be limited to, review of the following:



- a. Performance of the Chief School Administrator based upon the Board approved job description;
- b. Progress of the Chief School Administrator in achieving and/or implementing the school district's goals, program objectives, policies, instructional priorities, State goals, and statutory requirements; and
- c. Indicators of student progress and growth toward program objectives.

C. Annual Performance Report

- 1. The annual performance report shall be prepared and approved by a majority of the Board of Education's total membership by July 1 and shall include, but not be limited to:
 - a. Performance area(s) of strength;
 - b. Performance area(s) needing improvement based upon the job description and evaluation criteria set forth in N.J.A.C. 6A:10-8.1(c)2;
 - c. Recommendations for professional growth and development;
 - d. Summary of indicators of student progress and growth, and a statement of how the indicators relate to the effectiveness of the overall program and the Chief School Administrator's performance; and
 - e. Provision for performance data not included in the report to be entered into the record by the Chief School Administrator within ten teaching staff member working days after the report's completion.
- 2. The Board President, or the Board President's designee, shall prepare a draft of the annual performance report after the annual summary conference.
- 3. The draft of the annual performance report shall be disseminated to all Board members for review and comment before presenting the draft report to the Chief School Administrator.



REGULATION

NEPTUNE CITY BOARD OF EDUCATION

ADMINISTRATION

R 1240/page 3 of 3

Evaluation of Chief School Administrator

- a. In the event a Board member believes a provision(s) of the draft of the annual performance report is not in accord with the provisions agreed to by a majority of the Board during the annual summary conference, the Board member shall submit in writing their proposed revision(s) to the drafter of the annual performance report. The draft of the annual performance report may be revised by the drafter of the report if the drafter agrees with the Board member's proposed revision. In the event the drafter does not agree with the proposed revision(s), the issue shall be presented to the full membership of the Board of Education in executive session to make a final determination.
 4. The draft of the annual performance report shall be presented to the full membership of the Board of Education in executive session for discussion and approval after the draft report has been disseminated to all Board members for review. The Chief School Administrator shall receive a copy of the draft of the annual performance report from the Board President, or Board President's designee, prior to the executive session where the Board is scheduled to discuss and approve.
 5. In the event the Chief School Administrator does not agree with a provision(s) in the draft of the annual performance report, the Chief School Administrator shall be provided an opportunity to discuss with the full membership of the Board reconsideration of the disputed provision(s).
 6. A majority of the Board's full membership shall approve the draft of the annual performance report before presenting the final annual performance report to the Chief School Administrator.
 7. The Chief School Administrator may submit a written response to the final annual performance report, which shall be attached to the report.
- D. Nontenured Chief School Administrator
1. The evaluation procedure for a nontenured Chief School Administrator shall also be completed by July 1 each year.

Adopted: 18 March 2021



1260 INCAPACITY OF CHIEF SCHOOL ADMINISTRATOR

The Board of Education will appoint, by the affirmative votes of a majority of the members of the full Board, and fix the compensation of an Acting Chief School Administrator to serve when the Chief School Administrator is so incapacitated as to render him/her unable to perform the duties of the office of Chief School Administrator.

The Chief School Administrator will be deemed to be incapacitated when:

1. The Chief School Administrator is absent on disability leave of a projected duration of thirty days or more; or
2. The Chief School Administrator is certified incapacitated by a physician in accordance with Board Policy No. 3161; or
3. The Chief School Administrator has been suspended with pay; or
4. The Chief School Administrator has been suspended without pay pending the resolution of tenure charges.

The Acting Chief School Administrator shall discharge the duties of the office until the Chief School Administrator returns, resigns, or is removed from the position. The acts of the Acting Chief School Administrator shall be legal and binding as if done by the Chief School Administrator. The Acting Chief School Administrator shall not acquire tenure in the position of Chief School Administrator.

N.J.S.A. 18A:16-1.1; 18A:17-15

Adopted: 18 March 2021



1310 EMPLOYMENT OF SCHOOL BUSINESS ADMINISTRATOR/ BOARD SECRETARY

The Board of Education shall appoint a qualified and capable person to fill a vacancy in the position of School Business Administrator/Board Secretary. An appointment shall be made within a reasonable time after the occurrence of the vacancy and by the recorded roll call vote of a majority of the full Board. No person shall act as School Business Administrator/Board Secretary or perform the duties of a School Business Administrator/Board Secretary, as prescribed by the rules and regulations of the State Board of Education, unless he/she holds such a certificate.

All candidates for the position of School Business Administrator/Board Secretary must produce evidence of their training and/or experience in the fields of: economics; law; accounting; organizational theory; management or administration; finance; and other responsibilities as outlined in the job description or required by the Board.

A candidate for the position of School Business Administrator/Board Secretary shall be recommended to the Board by the Chief School Administrator. The Board of Education will appoint a suitable person who holds the appropriate certificate as prescribed by the State Board of Education. The appointment of the School Business Administrator/Board Secretary shall be made by the Board, which shall also fix the compensation to be paid to the School Business Administrator/Board Secretary.

Any candidate's misstatement of fact material to qualifications for employment or the determination of salary will be considered by this Board to constitute grounds for dismissal.

N.J.S.A. 18A:16-1; 18A:17-5; 18A:17-14.1 et seq.
N.J.A.C. 6A:9B-12.7

Adopted: 18 March 2021



1320 DUTIES OF SCHOOL BUSINESS ADMINISTRATOR/ BOARD SECRETARY

The School Business Administrator/Board Secretary shall strive to achieve district goals for students by providing leadership and supervision in the district program of fiscal management and in other assigned programs, and by acting as a proper model for staff and students both in and outside the school district.

In order to achieve the functions of the position, the School Business Administrator/Board Secretary shall work cooperatively with the district administrative staff to:

1. Establish and maintain long-range and other fiscal plans;
2. Prepare the annual budget based upon district resources and needs;
3. Ensure that all district fiscal, insurance, custodial-maintenance, food, and transportation services comply with the policies of the Board and the regulations of the district;
4. Ensure the proper functioning and evaluation of district personnel assigned to his/her areas of responsibility;
5. Manage efficiently the district systems of accounting, purchasing, investment, insurance, plant construction, plant operation and maintenance, transportation, and food services.
6. Strive to increase the capability of the staff assigned to his/her area of responsibility through consultation and in-service training;
7. Analyze the effectiveness of district programs in his/her area of responsibility and recommend changes in program direction, staffing, or management strategies as necessary;
8. Strive to increase the efficient use of district resources in his/her area of responsibility;
9. Help to interpret the budget and the district affairs under his/her supervision to interested members of the school district community;



ADMINISTRATION

1320/page 2 of 3

Duties of School Business Administrator/
Board Secretary

10. Strive to develop personal capabilities in financial strategies and supervisory methods;
11. Strive to conduct himself or herself in a proper manner at all times;
12. Be responsible for the conduct of all duties legally assigned to his/her position including:
 - a. Providing adequate notice of all public meetings of the Board to the members and to those requesting notice in accordance with law, N.J.S.A. 10:4-8d, 10:4-19; 18A:10-4, 18A:17-7;
 - b. Recording the minutes of all proceedings of the Board and the results of annual or special school elections, N.J.S.A. 18A:17-7;
 - c. Collecting tuition fees and other moneys due the Board and transmitting them to the Treasurer of School Moneys, N.J.S.A. 18A:17-8;
 - d. Examining and auditing all accounts and demands against the Board, presenting them to the Board at its meetings, indicating the Board's approval and sending them to the Treasurer for payment, N.J.S.A. 18A:17-8, 18A:19-4;
 - e. Keeping accounts of the district's financial transactions including a correct detailed accounting of all expenditures, N.J.S.A. 18A:17-8;
 - f. Reporting to the Board at each regular meeting, but not more often than once per month, the amount of the total appropriations and cash receipts for each account, and the amounts of warrants drawn against each account, and the amounts of orders or contractual obligations incurred and chargeable against each account, N.J.S.A. 18A:17-9;
 - g. Keeping all contracts, records, and documents belonging to the Board, N.J.S.A. 18A:17-9;
 - h. Giving the Board a detailed report of its financial transactions at the close of each fiscal year and filing a copy with the County Superintendent, N.J.S.A. 18A:17-10;



POLICY

NEPTUNE CITY BOARD OF EDUCATION

ADMINISTRATION

1320/page 3 of 3

Duties of School Business Administrator/
Board Secretary

- i. Reporting to the Commissioner annually the amount of unpaid school debt, the interest rate payable, the dates of issue, and the due dates of bonds or other indebtedness, N.J.S.A. 18A:17-12;
 - j. Preparing a summary of the annual audit and recommendations prior to the meeting of the Board to act thereon and supplying copies of the summary to interested persons, and to prepare the Comprehensive Annual Financial Report (CAFR) N.J.S.A. 18A:23-4;
 - k. Subscribe to bonds, notes, contracts, and other legal instruments of the Board for which the signature of the Secretary is required, N.J.S.A. 18A:24-32; and
 - l. Sign all school district warrants and certify to the payroll, N.J.S.A. 18A:19-1, 19-9.
13. Perform such other duties as may be required by the Board or Chief School Administrator.

The School Business Administrator/Board Secretary shall be directly responsible to the Chief School Administrator for the performance of his/her assigned duties and responsibilities as School Business Administrator and to the Board for the performance of his/her legal duties as Board Secretary.

Adopted: 18 March 2021



1330 EVALUATION OF THE SCHOOL BUSINESS ADMINISTRATOR

The Chief School Administrator will evaluate the performance of the School Business Administrator, tenured or nontenured, in order to assist both the Board and the School Business Administrator in the proper discharge of their responsibilities and to provide the district with efficient and effective services.

The evaluation of the School Business Administrator will consist of an assessment, by the Chief School Administrator, of the School Business Administrator's performance of the duties specified in the job description approved by the Board. Reference will be made to the report of the auditor. The Chief School Administrator may, in his/her discretion, consult with staff members assigned to work with the School Business Administrator.

The Board and the Chief School Administrator will annually establish procedures for the evaluation of the School Business Administrator. Such procedures may include, but need not be limited to, an informal conference with the School Business Administrator for the purpose of discussing his/her job performance, a written evaluation report to which the School Business Administrator may add comments, and the establishment of a written plan for performance improvement and growth. The School Business Administrator will be evaluated by the Chief School Administrator no later than April 30th.

Adopted: 18 March 2021



R 1330 EVALUATION OF SCHOOL BUSINESS ADMINISTRATOR

A. Frequency of Evaluation

The Chief School Administrator will evaluate the performance of the School Business Administrator annually, no later than April 30th, or more frequently as the Chief School Administrator deems necessary.

B. Purpose

The evaluation of the School Business Administrator shall be for the purpose of:

1. Promoting professional excellence and improving the skills of the School Business Administrator;
2. Improving the effectiveness and efficiency of the financial management system;
3. Reviewing the performance of the School Business Administrator against specific criteria developed by the Chief School Administrator in consultation with the Board.

C. Evaluation Criteria

1. Criteria for the evaluation of the School Business Administrator will be based upon the job description and will relate directly to each of the tasks described. Each criteria will be brief and will focus on a major function of the position, be based on observable information rather than factors requiring subjective judgment, and be written in a consistent format.
2. The Board shall develop and approve criteria for the evaluation which will be reviewed as necessary and as requested by the School Business Administrator but not less than annually, and upon any revision of the School Business Administrator's job description. Any proposed revision of the evaluation criteria will be provided to the School Business Administrator for comment before its adoption, and a copy of the adopted revision shall be provided to the School Business Administrator within ten working days of its adoption.
3. On or about April 1, the Chief School Administrator will complete a written evaluation of the School Business Administrator.



4. Upon completion, the Chief School Administrator will provide a copy of the evaluation to the School Business Administrator.
5. The Chief School Administrator and School Business Administrator will meet for an Annual Summary Conference to discuss the evaluation, establish a plan for performance, improvement, and growth.
6. An opportunity will be provided for the School Business Administrator to enter performance data not included in the annual performance report and to respond to any commentary in the written evaluation.

D. Collection and Reporting of Evaluation Data

Data for the evaluation of the School Business Administrator will be gathered by any one or more of the following methods:

1. Direct observation;
2. Review of a document produced by the School Business Administrator in the performance of his/her assigned duties;
3. Interviews with the School Business Administrator by the Chief School Administrator regarding his/her knowledge of assigned duties;
4. Paper and pencil instruments (such as competency tests, staff surveys, and the like);
5. A review of the School Business Administrator's performance by an outside observer (such as the district auditor);
6. Audio-visual monitoring of the School Business Administrator in the performance of assigned duties; and
7. Reference to previous performance reports.

E. Preparation of Written Evaluation Report

An annual written performance report shall be prepared, no later than April 30th, by the Chief School Administrator. The report will include, but need not be limited to:

1. Performance areas needing improvement;



2. A plan for professional growth and development; and
3. Provision for performance data not included in the report which may be entered into the report by the School Business Administrator within ten working days after the completion of the report.

F. Conduct of Annual Performance Conference

1. An annual summary conference with the School Business Administrator will be conducted by the Chief School Administrator before the annual performance report is filed.
2. The conference shall include but need not be limited to:
 - a. A performance review based upon achieving and implementing, as applicable, the district's goals, program objectives, policies, priorities, and statutory requirements;
 - b. A review of the most recent audit report; and
 - c. Growth toward the performance objectives established in the previous performance conference.
3. The purpose of the annual performance conference shall be to provide a total review of the year's work, to identify strategies for improvement where necessary, to recognize achievement and good practice, and to specify a plan for professional growth and development. Adequate time shall be allotted for the conference in order to cover the required topics of discussion and to permit a full exploration of the possible solutions to any problems identified.
4. The annual performance report will be signed by the Chief School Administrator at the time of the annual performance conference and by the School Business Administrator within fifteen working days of that conference. It will be filed in the School Business Administrator's personnel file, and a copy will be provided to him/her.
5. It will be the duty of the School Business Administrator to implement the plan for professional growth as prepared; his/her failure to do so may result in disciplinary action up to and including certification of tenure charges.

Issued: 18 March 2021



1331 EVALUATION OF THE BOARD SECRETARY

The Board of Education will evaluate the performance of the Board Secretary in order to assist both the Board and the Board Secretary in the proper discharge of their responsibilities and to provide the district with efficient and effective services.

The evaluation of the Board Secretary will consist of an assessment, by members of the Board, of the Board Secretary's performance of the duties specified in the job description as they relate to the function of Board Secretary approved by the Board. Reference will be made to the report of the auditor. The Board may, in its discretion, consult with staff members assigned to work with the Board Secretary. If the Board Secretary also serves as School Business Administrator, the Chief School Administrator shall evaluate the individual with regard to those duties and responsibilities.

The Board will annually establish procedures for the evaluation of the Board Secretary. Such procedures may include, but need not be limited to, an informal Board conference with the Board Secretary for the purpose of discussing his/her job performance, a written evaluation report to which the Board Secretary may add comments, and the establishment of a written plan for performance improvement and growth. The Board Secretary will be evaluated by the Board no later than April 30th.

Adopted: 18 March 2021



1350 INCAPACITY OF SCHOOL BUSINESS ADMINISTRATOR/ BOARD SECRETARY

The Board of Education will appoint, by the affirmative votes of a majority of the members of the full Board, and fix the compensation of an Acting School Business Administrator/Board Secretary to serve when the School Business Administrator/Board Secretary is so incapacitated as to render him/her unable to perform the duties of the office of School Business Administrator/Board Secretary.

The School Business Administrator/Board Secretary will be deemed to be incapacitated when:

1. The School Business Administrator/Board Secretary is absent on disability leave of a projected duration of thirty days or more; or
2. The School Business Administrator/Board Secretary is certified incapacitated by a physician in accordance with Board Policy No. 3161; or
3. The School Business Administrator/Board Secretary has been suspended with pay; or
4. The School Business Administrator/Board Secretary has been suspended without pay pending the resolution of tenure charges.

The Acting School Business Administrator/Board Secretary shall discharge the duties of the office until the School Business Administrator/Board Secretary returns, resigns, or is removed from the position. The acts of the Acting School Business Administrator/Board Secretary shall be legal and binding as if done by the School Business Administrator/Board Secretary. The Acting School Business Administrator/Board Secretary shall not acquire tenure in the position of School Business Administrator/Board Secretary.

N.J.S.A. 18A:16-1.1; 18A:17-5

Adopted: 18 March 2021



1400 JOB DESCRIPTIONS

The Board of Education shall adopt job descriptions for the positions of Chief School Administrator, School Business Administrator/Board Secretary, and each supervisory position. The Chief School Administrator shall prepare, approve, and disseminate to the Board job descriptions for all other employment positions created by the Board.

All job descriptions will be written and will be based on the outcome and process goals developed by the Board and, as appropriate to the position, on program objectives. Each job description will specify:

1. The qualifications and specific certificate and endorsement required for the position;
2. The function, duties, and responsibilities of the position;
3. The extent and the limits of the position holder's authority;
4. The work relationships between the position holder and other employees of the district; and
5. Any background experiences, personal qualities, and individual achievements that the Board prefers in a person appointed to the position.

Job descriptions will be reviewed periodically.

N.J.A.C. 6A:32-4.1; 6A:32-4.4; 6A:32-4.5; 6A:32-5.1

Adopted: 18 March 2021



REGULATION

NEPTUNE CITY BOARD OF EDUCATION

ADMINISTRATION

R 1400/page 1 of 2

Job Descriptions

M

R 1400 JOB DESCRIPTIONS

- A. A job description shall be prepared for each job position in the district, including all administrative, educational specialist, instructional, and support staff positions.
- B. Each job description must include:
 - 1. The goals of the position as they relate to district goals;
 - 2. The qualifications of the position holder including the certificate and endorsement required for the position and such other prerequisites for employment as the possession of a license to operate a vehicle or machine;
 - 3. The functions, duties, and responsibilities of the position;
 - 4. The extent and limits of the position holder's authority; and
 - 5. The working relationships of the position within and outside the school district.
- C. Each job description will:
 - 1. Be written in clear language that briefly describes the major functions of the position;
 - 2. Whenever possible, be generic in form, covering a number of specific positions;
 - 3. Be written in the same format, using the active and present tense, operational verbs, common terminology, and a direct, simple style; and
 - 4. Be gender neutral or employ both male and female pronouns.
- D. Maintenance of district job descriptions shall be the responsibility of the Chief School Administrator. Job descriptions shall be reviewed on the request of a single position holder.



REGULATION

NEPTUNE CITY BOARD OF EDUCATION

ADMINISTRATION

R 1400/page 2 of 2

Job Descriptions

- E. Each employee shall be sent a copy of his/her current job description by the Chief School Administrator or designee. Any revision of a job description shall be provided to each holder of a position covered by the job description within thirty working days of its approval.
- F. Suggested revisions to job descriptions by a job holder shall be referred initially to the job holder's immediate supervisor.

Adopted: 18 March 2021



1510 AMERICANS WITH DISABILITIES ACT

It is the policy of the Board of Education that no qualified individual with a disability will, on the basis of disability, be excluded from participation in, be denied the benefits of, or be subjected to discrimination in employment or under any program, activity, or services sponsored by this Board. The Board will comply with the Americans with Disabilities Act of 1990, as amended by the Americans with Disabilities Amendments Act of 2008 (hereafter referred to as the Act).

Notice of Board Policy 1530 – Equal Employment Opportunities and Board Policy 5750 – Equal Educational Opportunity will be included in the Board policy manual, posted throughout the district, and referenced in any district statement regarding the availability of employment positions or educational services.

Employment

No employee or candidate for employment will be discriminated against in recruitment, hiring, advancement, discharge, compensation, job training, transfer, or any other term, condition, or privilege of employment solely on the basis of a disability, provided the employee or candidate can, with or without reasonable accommodation, perform the essential functions of the position sought or held.

No candidate for employment will be required to answer a question or submit to an examination regarding a disability except as such disability relates directly to perform job-related functions. No candidate will be discriminated against on the basis of a disability that is not directly related to the essential function of the position for which he/she has applied.

Reasonable accommodations, not directly affecting the educational and/or instructional program, will be made to accommodate employment conditions to the needs of qualified individuals with disabilities, such accommodations may include, but are not limited to: making existing facilities used by employees readily assessable to and usable by individuals with disabilities, job restructuring, part-time modified work schedules, reassignment to a vacant position, acquisition or modification of equipment or devices, appropriate adjustment or modifications of examinations, training materials or policies, the provision of qualified readers or interpreters, and other similar accommodations for individuals with disabilities.

The district will furnish appropriate auxiliary aids and services where necessary to afford individuals with disabilities an equal opportunity to participate in and enjoy the benefits of a service, program, or activity conducted by the district.



Facilities Maintenance and Accessibility

No qualified individual with a disability will, because of the school district's facilities being inaccessible or unusable by disabled persons, be denied the benefits of, be excluded from participation in or otherwise be subjected to discrimination under any program or activity offered by the Board. No new facilities will be constructed that do not fully comply with the Act. Alterations to existing facilities or part thereof, will be altered in such a manner to the maximum extent feasible, that the facilities are readily accessible and usable by individuals with disabilities who have a need to access Board facilities.

The district will maintain facilities and equipment required by the Act to be readily accessible to and usable by persons with disabilities.

Service, Program, and Activity Access

The district will make reasonable accommodations so that services, programs, and activities are readily accessible and usable by qualified individuals with disabilities. The district is not required to provide personal devices or services of a personal nature to qualified individuals with disabilities.

Evaluation and Compliance

The Chief School Administrator or designee will evaluate district programs and practices on nondiscrimination, in accordance with law, and will report to the Board accordingly. Assurances of compliance will be submitted as required by law.

The district, with the assistance of interested persons, who may include individuals with disabilities or members of organizations representing individuals with disabilities, or other interested community members and staff, will evaluate its current services, policies, practices, and the effects thereof with regard to the requirements of the Act and make necessary modifications to meet the Act requirements. If such modifications would result in a fundamental alteration of the nature of the affected program or activity, or undue financial or administration burden, the district will provide access through means which would not result in a fundamental alteration or undue financial or administrative burden. 28 CFR §35.150(a)

For a period of at least three years following completion of the self-evaluation, the district will maintain on file, available for public inspection, a list of those interested persons consulted, a description of the areas examined and problems identified, and modifications made.



POLICY

NEPTUNE CITY BOARD OF EDUCATION

ADMINISTRATION
1510/page 3 of 3
Americans with Disabilities Act

Enforcement - 28 CFR §35.107

The Board will designate the Supervisor of Special Services as district coordinator for matters dealing with ADA compliance. The district coordinator can be contacted at the following address or telephone number:

Office Address: Neptune City School District
210 West Sylvania Avenue
Neptune City, NJ 07753

Telephone Number: 732-775-5319

Grievance procedures are outlined in Regulation 1510.

Guarantee of Rights

The Board will not interfere, directly or indirectly, with any person's exercise or enjoyment of the rights protected by the Act.

The Board will not discriminate against any person for that person's opposition to any act or practice made unlawful by law or this Policy or for that person's participation in any manner in an investigation or proceeding arising under the Act.

The district is not required to permit an individual to participate in or benefit from the district's services, programs, or activities when that individual poses a direct threat to the health or safety of others.

Notice

Policy and Regulation 1510 will be available to any member of the public in the district's Policy and Regulation Manual.

42 U.S.C. 12101 (Americans with Disabilities Act of 1990, as amended)
N.J.S.A. 10:5-1 et seq.
N.J.S.A. 18A:18A-17
N.J.A.C. 6A:14-1 et seq.
34 CFR Part 104

Adopted: 18 March 2021



R 1510 AMERICANS WITH DISABILITIES ACT

The Board of Education will comply with the requirements of the Americans with Disabilities Act of 1990, including changes made by the ADA Amendments Act of 2008 (hereafter referred to as the "Act.")

A. Definitions

1. "Act" means the Americans with Disabilities Act of 1990, as amended by the ADA Amendments Act of 2008.
2. "Auxiliary aids and services" are identified based on the context of the communication and the individual's disability. 28 CFR §35.104

They include, but are not limited to:

- a. Effective methods of making aurally delivered information available to individuals who are deaf or hard of hearing;
 - b. Effective methods of making visually delivered materials available to individuals who are blind or have low vision;
 - c. Acquisition or modification of equipment or devices or similar services and actions; and
 - d. Other similar services and actions.
3. "Board" means the Board of Education of this school district.
 4. "Companion" means a family member, friend, or associate of an individual seeking access to a service, program, or activity of a school district, who, along with such individual, is an appropriate person with whom the district should communicate.
 5. "Complete complaint" means a written statement, signed by the complainant or someone authorized to do so on his/her behalf, containing the complainant's name and address and describing the public entity's alleged discriminatory action in sufficient detail to inform the agency of the nature and date of the alleged violation. 28 CFR §35.104



REGULATION

NEPTUNE CITY BOARD OF EDUCATION

ADMINISTRATION

R 1510/page 2 of 18

Americans with Disabilities Act

6. "Current illegal use of drugs" means illegal use of drugs that occurred recently enough to justify a reasonable belief that a person's drug use is current or that continuing use is a real and ongoing problem.
7. "Direct threat" means a significant risk to the health or safety of others that cannot be eliminated by a modification of policies, practices or procedures, or by the provision of auxiliary aids or services. 28 CFR §35.139
8. "Disability" means, with respect to an individual, that the individual meets one or more of the following three prongs:
 - a. A physical or mental impairment that substantially limits one or more of the major life activities of such individual;
 - b. A record of such an impairment; or
 - c. Being regarded as having such an impairment.
9. "District" means this school district.
10. "District Coordinator" means the district official responsible for the coordination of activities relating to compliance with the Act.
11. "Drug" means a controlled substance, as defined in schedules I through V of Section 202 of the Controlled Substances Act. 21 U.S.C. §812
12. "Employee" means an individual employed by the Board.
13. "Essential functions of the employment position" are based upon the employer's judgment and can include an employer's written description, prepared before advertising or interviewing applicants for the job.
14. "Existing facility" means a facility in existence on any given date, newly constructed or altered.
15. "Facility" means all or any portion of buildings, property, or structures, including the site where the building, property, structure, or equipment is located.
16. "Illegal use of drugs" means the use of one or more drugs, the possession or distribution of which is unlawful under the Controlled Substances Act. 21 U.S.C. §812



17. “Individual with a disability” means a person who has a disability and does not include an individual currently engaging in the illegal use of drugs, when the district acts on the basis of such use.
18. “Major life activities” means those of central importance to daily life and include, but are not limited to, functions such as: caring for one’s self, performing manual tasks, walking, seeing, hearing, eating, sitting, reaching, writing, standing, reaching, lifting, sleeping, bending, speaking, breathing, reading, concentrating, thinking, communicating, interacting with others, learning, and working. “Major life activities” also includes physical or mental impairments that substantially limit the operation of a major bodily function, including, but not limited to: functions of the immune system, special sense organs and skin, normal cell growth, and digestive, genitourinary, bowel, bladder, neurological, brain, respiratory, circulatory, cardiovascular, endocrine, hemic, lymphatic, musculoskeletal, reproductive systems, and the operation of an individual organ within a body system. 28 CFR §35.108; 28 CFR §36.105
19. “Mitigating measures” means steps taken to eliminate or reduce the symptoms or impact of an impairment. “Mitigating measures” include, but are not limited to: medication; medical equipment/appliances; mobility devices; low vision devices (not including ordinary eyeglasses or contact lenses); prosthetics (including limbs and devices); hearing aids, cochlear implants, or other implantable hearing devices; oxygen therapy equipment and supplies; the use of assistive technology; reasonable modifications or auxiliary aids or services; learned behavioral or adaptive neurological modifications; and psychotherapy, behavioral, or physical therapies. 42 U.S.C. 126 §12102
 - a. Mitigating measures, must not be used when determining whether an impairment is a disability except for the use of corrective eyeglasses or contact lenses. Mitigating measures may be considered in assessing whether someone is entitled to reasonable accommodation or poses a direct threat.
20. “Office for Civil Rights” (OCR) means the United States Department of Education Office for Civil Rights.
21. “Other power-driven mobility device” means any mobility device powered by batteries, fuel, or other engines used by individuals with mobility disabilities for the purpose of locomotion, including any mobility device designed to operate in areas without defined pedestrian routes, but that is not a wheelchair. 28 CFR §35.104



22. "Physical or mental impairment" means any physiological disorder or condition such as, cosmetic disfigurement or anatomical loss affecting one or more body systems, such as neurological, musculoskeletal, special sense organs, respiratory (including speech organs), cardiovascular, reproductive, digestive, genitourinary, immune, circulatory, hemic and lymphatic, skin, and endocrine; or any mental or psychological disorder such as intellectual disability, organic brain syndrome, emotional or mental illness, and specific learning disabilities. 28 CFR §35.108(b)(2) and 28 CFR§36.105(b)4
- a. Physical or mental impairments may include, but are not limited to: contagious and noncontagious diseases and conditions; orthopedic, visual, speech, and hearing impairments; cerebral palsy, epilepsy, muscular dystrophy, multiple sclerosis, cancer, heart disease, diabetes, intellectual disability, emotional illness, dyslexia and other specific learning disabilities, Attention Deficit Hyperactivity Disorder (ADHD), Human Immunodeficiency Virus (HIV) (whether symptomatic or asymptomatic), tuberculosis, drug addiction, and alcoholism.
 - b. Physical or mental impairments do not include: transvestism; transsexualism; homosexuality or bisexuality; gender identity disorders; sexual behavior disorders; pedophilia; exhibitionism; environmental, cultural, and economic disadvantages; pregnancy; physical characteristics; personality traits or behaviors; normal deviations in height, weight, or strength; compulsive gambling; kleptomania; pyromania; and psychoactive substance use disorders resulting from current illegal use of drugs.
 - c. An impairment that is episodic or in remission may be considered a "disability" if it would substantially limit a major life activity when active.
 - d. Not all impairments are disabilities.
23. "Public entity" means this Board of Education.
24. "Qualified individual" for the purposes of employment, means an individual who, with or without reasonable accommodation, can perform the essential functions of the employment position (based upon the employer's judgment) that such individual holds or desires. An employer's written description, prepared before advertising or interviewing applicants for the job, shall be considered evidence of the essential functions of the job. 42 U.S.C. 126 §12111(8)



25. "Reasonable accommodation" may include making existing facilities used by employees readily assessable to and usable by individuals with disabilities and job restructuring, part-time modified work schedules, reassignment to a vacant position, acquisition or modification of equipment or devices, appropriate adjustment or modifications of examinations, training materials or policies, the provision of qualified readers or interpreters, and other similar accommodations for individuals with disabilities.
26. "Record of such an impairment" means the individual has a history of, or has been misclassified as having a mental or physical impairment that substantially limits one or more major life activities.
27. "Regarded as having an impairment" means the individual establishes that he or she has been subjected to a prohibited action under the Act because of an actual or perceived physical or mental impairment, whether or not that impairment substantially limits or is perceived to substantially limit a major life activity.
 - a. For this prong only, the public entity must demonstrate the impairment is or would be both transitory (lasting or expected to last six months or less) and minor to show an individual is not regarded as having such an impairment. 42 U.S.C. 126 §12102(3)(B)
 - b. A public entity is not required to provide a reasonable modification to an individual meeting the definition of "disability" solely under the "regarded as" prong.
28. "Substantially limits" means the extent to which the impairment limits an individual's ability to perform a major life activity as compared to most people in the general population, whether or not an individual chooses to forgo mitigating measures. 42 U.S.C. 126 §12102(4); 28 CFR §35.108(d); 28 CFR §35.105(d) The rules of construction when determining whether an impairment substantially limits performance of a major life activity include:
 - a. That it is broadly construed in favor of expansive coverage, to the maximum extent permitted under the Act.
 - b. That it does not demand extensive analysis.
 - c. That it substantially limits one major life activity, but not necessarily other major life activities.



REGULATION

NEPTUNE CITY BOARD OF EDUCATION

ADMINISTRATION

R 1510/page 6 of 18

Americans with Disabilities Act

- d. That it may be episodic or in remission, as long as the impairment would substantially limit a major life activity when active.
 - e. That it need not prevent, or significantly or severely restrict, an individual from performing a major life activity.
 - f. That it requires an individualized assessment which does not create an “inappropriately high level of limitation” and is based upon the conditions, manner, or duration under which the individual can perform the major life activity 42 U.S.C. 12102(4)(B).
 - g. That it generally will not require scientific, medical, or statistical evidence (although such evidence can be required where appropriate evidence that can be considered may include statements or affidavits of affected individuals and school records).
 - h. That the determination is made without regard to ameliorative effects of mitigating measures, except for the use of ordinary eyeglasses or contact lenses intended to fully correct visual acuity or eliminate refractive error. Non-ameliorative effects, such as the negative side effects of medication or a medical procedure, may also be considered.
 - i. That the effects of an impairment lasting or expected to last less than six months can be substantially limiting for establishing a disability under the first two prongs: “actual disability” or “record of”.
29. “Undue hardship” means an action requiring significant difficulty or expense when considered in light of factors which include: the nature and cost of the needed accommodation; the overall financial resources of the district or facility providing the reasonable accommodation; the size of the district with respect to the number of employees; effect on expenses and resources, or the impact otherwise of accommodation upon the operation of the facilities; and the type/location of facilities. 42 U.S.C. 126 §12111 (10)
30. “Wheelchair” means a manually operated or power-driven device designed primarily for use by an individual with a mobility disability.



B. General Requirements

1. Prohibitions Against Discrimination

- a. Discrimination is prohibited against a qualified individual on the basis of a disability. Such individual will not be excluded from participation in or denied the benefits of district services, programs, or activities or be subjected to discrimination by the district in accordance with 28 CFR §35.130. The district must ensure that:
 - (1) When services, programs, and activities are viewed in their entirety, they are accessible to and usable by individuals with disabilities; and
 - (2) Access to services, programs, and activities is provided in an integrated setting unless separate programs are necessary to ensure equal benefits.
- b. The district is not required to take any action that would result in a fundamental alteration of the nature of the program or activity or undue financial or administrative burden. However, claiming undue burden still requires the district to provide access through means that would not result in a fundamental alteration or undue financial or administrative burden.

2. Direct Threat - 28 CFR §35.139

- a. The district is not required to permit an individual to participate in or benefit from the district's services, programs, or activities when that individual poses a direct threat to the health or safety of others.
- b. To determine whether an individual poses a direct threat to the health or safety of others, the district must make an individualized assessment, based on reasonable judgment that relies on current medical knowledge or on the best available objective evidence to ascertain:
 - (1) The nature, duration, and severity of the risk;
 - (2) The probability that the potential injury will actually occur; and
 - (3) Whether reasonable modifications of policies, practices, or procedures or the provision of auxiliary aids or services will mitigate the risk.



3. Illegal Use of Drugs - 28 CFR §35.131

- a. The district will not discriminate on the basis of past illegal use of drugs against an individual who is not engaging in current illegal use of drugs and who:
 - (1) Has successfully completed a supervised drug rehabilitation program or has otherwise been rehabilitated successfully;
 - (2) Is participating in a supervised rehabilitation program; or
 - (3) Is erroneously regarded as engaging in such use.
- b. While the Act does not prohibit discrimination against an individual based on that individual's current illegal use of drugs, the district will not deny health services or services provided in connection with drug rehabilitation to an individual on the basis of that individual's current illegal use of drugs, if the individual is otherwise entitled to such services.
- c. The Act does not prohibit the district from adopting or administering reasonable policies or procedures, including but not limited to drug testing, designed to ensure that an individual who formerly engaged in the illegal use of drugs is not now engaging in current illegal use of drugs.

C. Personal Devices and Services

- 1. The district will permit individuals with mobility disabilities to use wheelchairs and manually powered mobility aids such as walkers, crutches, canes, braces, or other similar devices designed for use by individuals with mobility disabilities in any areas open to pedestrian use. 28 CFR §35.137
- 2. The district will make reasonable modifications to permit the use of other power-driven mobility devices by individuals with mobility disabilities unless the district can demonstrate that the power-driven device cannot be operated in accordance with legitimate safety requirements pursuant to 28 CFR §35.137. The district will not ask an individual using a wheelchair or other power-driven mobility device questions about the nature and extent of the individual's disability. The district may require the individual to provide credible assurance that the device is required because of the person's disability.



REGULATION

NEPTUNE CITY BOARD OF EDUCATION

ADMINISTRATION

R 1510/page 9 of 18

Americans with Disabilities Act

3. The district is not required to provide individuals with disabilities personal devices, such as wheelchairs; individually prescribed devices such as prescription eyeglasses or hearing aids; readers for personal use or study; or services of a personal nature including assistance in eating, toileting, or dressing pursuant to 28 CFR §35.135.

D. Employment - 42 U.S.C. 126 §12112

1. Discrimination in Employment

- a. The Board will not discriminate against a qualified individual on the basis of disability in regard to job application procedures; hiring, advancement, or discharge; compensation; job training; and other terms, conditions, and privileges of employment.
- b. Applicants and employees working for or applying to work for the district who qualify for a job and are able to perform the essential functions of that job are entitled to reasonable accommodations provided that such accommodations do not pose undue hardship for the district.
- c. Nothing in the Act shall be construed to preempt, modify, or amend any State, county, or local law, ordinance, or regulation as outlined in N.J.A.C. 6A:32-4.1 et seq.
- d. The school district may not, on the basis of disability:
 - (1) Limit, segregate, or classify a qualified individual in a way that adversely affects his/her opportunities or status of such employee, applicant, or participant in a contractual or other arrangement;
 - (2) Utilize standards, criteria, or methods of administration that have the effect of discrimination on the basis of disability or perpetuate the discrimination of others subject to common administrative control;
 - (3) Exclude or otherwise deny equal jobs or benefits to a qualified individual because of the known disability of an individual with whom the qualified individual is known to associate or have a relationship;



- (4) Fail to make reasonable accommodations to known physical or mental limitations of an otherwise qualified individual with a disability or deny employment opportunities to such qualified individual unless the district can demonstrate that the accommodation would impose undue hardship to district operations;
 - (5) Use qualification standards, employment tests, or other selection criteria that screen out or tend to screen out individuals with disabilities unless the standard, test, or other selection criteria, as used by the district, is shown to be job-related for the position in question and consistent with business necessity; and/or
 - (6) Select and administer tests concerning employment to otherwise qualified individuals who possess impaired sensory, manual, or speaking skills, unless done in an effective manner to ensure that, when such tests are administered to a job applicant or employee who has a disability that impairs sensory, manual, or speaking skills, the test results accurately reflect the skills, aptitude, or other factors such tests purport to measure rather than reflecting the impaired sensory, manual, or speaking skills of the employee or applicant (except where such skills are the factors that the test purports to measure).
2. Medical Examinations and Inquiries - (42 U.S.C. 126 §12112)
- a. Pre-employment
 - (1) Prohibited examination or inquiries:
 - (a) Whether such an applicant is an individual with a disability; or
 - (b) The nature or severity of such disability.
 - (2) Acceptable inquiry:
 - (a) The ability of an applicant to perform job-related functions.



b. Employment Entrance Examinations

- (1) The district may require a medical examination after an offer of employment has been made to a job applicant and prior to the commencement of the employment duties of such applicant, and may condition an offer of employment on the results of such examination, if:
 - (a) All entering employees are subject to such an examination regardless of disability;
 - (b) Information obtained regarding the medical condition or history of the applicant is collected and maintained on separate forms and in separate medical files and is treated as a confidential medical record, except that:
 - i. Supervisors and managers may be informed regarding necessary restrictions on work or duties of the employees and necessary accommodations;
 - ii. First aid and safety personnel may be informed, when appropriate, if the disability might require emergency treatment; and
 - iii. Government officials investigating compliance with this Act, will be provided relevant information on request.
- (2) The results of such examination shall only be used in accordance with these provisions.

c. Examination and Inquiry:

- (1) Prohibited examinations and inquiries:
 - (a) The district will not require a medical examination and will not make inquiries of an employee as to whether such employee is an individual with a disability or as to the nature or severity of the disability, unless such examination or inquiry is shown to be job-related and consistent with business necessity.



REGULATION

NEPTUNE CITY BOARD OF EDUCATION

ADMINISTRATION
R 1510/page 12 of 18
Americans with Disabilities Act

- (2) Acceptable examinations and inquiries:
 - (a) The district may conduct voluntary medical examinations, including voluntary medical histories, which are part of an employee health program available to employees in the district.
 - (b) The district may make inquiries into the ability of an employee to perform job-related functions.
- 3. Defenses - 42 U.S.C. 126 §12113
 - a. Qualification Standards
 - (1) It may be a defense to a charge of discrimination under the Act that an alleged application of qualification standards, tests, or selection criteria that screen out, tend to screen out, or otherwise deny a job or benefit to an individual with a disability has been shown to be job-related and consistent with business necessity, and such performance cannot be accomplished by reasonable accommodation, as required under the Act.
 - (a) The term "qualification standards" may include a requirement that an individual will not pose a direct threat to the health or safety of other individuals in the workplace.
 - (b) Notwithstanding 42 U.S.C. 126 §12102 (4)(E)(ii), the Board will not use qualification standards, employment tests, or other selection criteria based on an individual's uncorrected vision unless the standard, test, or other selection criteria, as used by the covered entity, is shown to be job-related for the position in question and consistent with business necessity.
 - b. Infectious and Communicable Diseases
 - (1) In any case in which an individual has an infectious or communicable disease included on the list developed by the United States Secretary of Health and Human Services in accordance with the Act, and which cannot be eliminated by reasonable accommodation, and that is transmitted to others through the handling of food, the Board and its administration may refuse to assign or allow such individual to continue to work in a job involving food handling.



REGULATION

NEPTUNE CITY BOARD OF EDUCATION

ADMINISTRATION
R 1510/page 13 of 18
Americans with Disabilities Act

- c. Illegal Use of Drugs and Alcohol - 42 U.S.C. 126 §12114
 - (1) An individual with a disability shall not include any employee or applicant who is currently engaging in the illegal use of drugs, with exceptions noted in section B.3. of this Regulation.
 - (2) The Board will hold an employee who engages in the illegal use of drugs or who is an alcoholic to the same qualification standards for employment or job performance and behavior as other employees, even if any unsatisfactory performance or behavior is related to the drug use or alcoholism of such employee.
- d. Drug Testing
 - (1) For the purposes of the Act, a test to determine the illegal use of drugs will not be considered a medical examination.
 - (2) No provision of the Act shall be construed to encourage, prohibit, or authorize the conducting of drug testing for the illegal use of drugs by job applicants or employees or making employment decisions based on such test results.

E. Program Accessibility

1. Discrimination Prohibited

- a. Except as otherwise provided in 28 CFR §35.150, no qualified individual with a disability will, because the district's facilities are inaccessible to or unusable by individuals with disabilities, including inside or outside access to such facilities, may be excluded from participation in, or be denied the benefits of the services, programs, or activities of the district, or be subjected to discrimination by the district.
- b. The district will maintain facilities and equipment required by the Act to be readily accessible to and usable by individuals with disabilities. This provision does not prohibit isolated or temporary interruptions in service or access due to maintenance or repairs. 28 CFR §35.133
 - (1) In regard to existing facilities, the district will operate each service, program, or activity so that the service, program, or activity, when viewed in its entirety, is readily accessible to and usable by individuals with disabilities.



- (a) The district is not required to fundamentally alter the nature of a service, program, or activity, or assume undue financial or administrative burdens, or take any action threatening the historic significance of a historic property and has the burden of proving that compliance with the Act would result in such alterations or burdens. 28 CFR §35.150(a)
 - (b) Should the Board and Chief School Administrator or his/her designee determine, after considering all resources available, that compliance would result in such alteration or burden, a written statement of reasons must accompany such a determination.
 - (c) The Board will take any other action, including, but not limited to redesign or acquisition of equipment, or reassignment of services or staff, that would not result in such alteration or burden, but would, nevertheless, ensure that individuals with disabilities receive the benefits/services provided by the district.
- (2) In regard to new construction and alterations, each facility or part of a facility constructed by, on behalf of, or for the use of the district will be designed and constructed in such manner, in accordance with 28 CFR §35.151, that the facility or part of the facility is readily accessible to and usable by individuals with disabilities.
- (a) Full compliance with the requirements of 28 CFR §35.151 is not required where the district can demonstrate that it is structurally impracticable to meet the requirements.
 - (b) If providing accessibility in conformance with 28 CFR §35.151 to individuals with certain disabilities (e.g., those who use wheelchairs) would be structurally impracticable, accessibility shall nonetheless be ensured to persons with other types of disabilities, (e.g., those who use crutches or who have sight, hearing, or mental impairments) in accordance with 28 CFR §35.151.



F. Communications - 28 CFR §35.160

1. The district will take appropriate steps to ensure that communications with applicants, participants, members of the public, and companions with disabilities are as effective as communications with others.
2. The district will furnish appropriate auxiliary aids and services where necessary to afford individuals with disabilities, including applicants, participants, companions, and members of the public, an equal opportunity to participate in and enjoy the benefits of a service, program, or activity conducted by the district.
 - a. Auxiliary aids and services will be provided in accessible formats, in a timely manner, and in such a way as to protect the privacy and independence of the individual with a disability.
 - b. The district will not require an individual with a disability to bring another individual to interpret with a disability. The district will not rely on an adult accompanying an individual with a disability or on a minor child to interpret or facilitate communication, except in an emergency involving an imminent threat to the safety or welfare of an individual or the public where there is no interpreter available; or where the individual with a disability specifically requests that the accompanying adult interprets or facilitates communication, the accompanying adult agrees to provide such assistance, and reliance on that adult is appropriate under the circumstances.
3. Where the district communicates by telephone with applicants and beneficiaries who are deaf, hard of hearing, or who have speech impairments, text telephones (TTYs) or equally effective telecommunications systems equipped with emergency service access will be used to communicate, in the same time and manner as with other telephone systems (including automated systems). 28 CFR §35.161
4. The district will ensure that interested persons, including persons with impaired vision or hearing, can obtain information as to the existence and location of accessible services, activities, and facilities, including signage at all inaccessible facility entrances. 28 CFR §35.163



G. Grievance Procedure - 28 CFR §35.107(b)

1. A complainant who believes that he/she has been harmed or adversely affected by a discriminatory practice or act prohibited by law and/or policy shall first discuss the matter with his/her immediate supervisor in an attempt to resolve the matter informally.
2. If the matter is not resolved to the satisfaction of the complainant within thirty working days, the complainant may submit a written complaint to the District Coordinator. The complaint will include:
 - a. The complainant's name and address;
 - b. The specific act or practice of which the complainant complains;
 - c. The employee, if any, responsible for the allegedly discriminatory act;
 - d. Results of discussions conducted in accordance with paragraph G.1. above; and
 - e. Reasons why those results are not satisfactory.
3. The District Coordinator will investigate the matter informally and will respond to the complainant in writing no later than seven working days after receipt of the written complaint. A copy of the complaint and the response will be forwarded to the Chief School Administrator.
4. The response of the District Coordinator may be appealed to the Chief School Administrator in writing within three working days after it has been received by the complainant. The appeal will include the original complaint, the response to the complaint, and the complainant's reason for rejecting the response. A copy of the appeal must be given to the staff member alleged to have acted discriminatorily.
5. On his/her timely request (that is, submitted before the expiration of the time within which the Chief School Administrator must render a decision), the complainant will be given an informal hearing before the Chief School Administrator, at a time and place convenient to the parties, but no later than seven working days after the request for a hearing has been submitted. The Chief School Administrator may also require at the hearing the presence of the staff member charged with a discriminatory act and any other person with knowledge of the complained act.



REGULATION

NEPTUNE CITY BOARD OF EDUCATION

ADMINISTRATION
R 1510/page 17 of 18
Americans with Disabilities Act

6. The Chief School Administrator will render a written decision in the matter no later than seven working days after the appeal was filed or the hearing was held, whichever occurred later. Copies of the decision will be given to all parties.
7. The complainant may appeal the Chief School Administrator's decision to the Board by filing a written appeal with the School Business Administrator/Board Secretary no later than three working days after receipt of the Chief School Administrator's decision. The appeal shall include:
 - a. The original complaint;
 - b. The response to the complaint;
 - c. The Chief School Administrator's decision;
 - d. A transcript of the hearing, if one has been made, or a summary of the hearing to which all parties have consented; and
 - e. The complainant's reason for believing the Chief School Administrator's decision should be changed.
8. If a staff member is charged with a discriminatory act, the Board will provide a copy of the appeal to that staff member.
9. The Board will review all papers submitted and may render a decision on the basis of the proceedings below. If the complainant so requests, the Board may convene a hearing, at which all parties may be represented by counsel and may present and examine witnesses, who will testify under oath.
10. The Board will render a written decision no later than forty-five calendar days after the appeal was filed or the hearing held, whichever occurred later. Copies of the decision will be given to all parties.
11. The complainant will be informed of his/her right to appeal the Board's decision to the:

U.S. Department of Justice
950 Pennsylvania Avenue, NW
Civil Rights Division
Disability Rights Section – 1425 NYAV
Washington, D.C. 20530



REGULATION

NEPTUNE CITY BOARD OF EDUCATION

ADMINISTRATION
R 1510/page 18 of 18
Americans with Disabilities Act

12. An individual who believes he or she or a specific class of individuals has been subjected to discrimination on the basis of disability by the district may, by himself/herself, or an authorized representative, at any time, file a complaint directly with OCR.
13. Record:
 - a. The record of any complaint processed in accordance with this procedure will be maintained in a file kept by the District Coordinator.
 - b. A copy of the decision rendered at the highest level of appeal will be kept in the employee's personnel file.

Adopted: 18 March 2021



1511 BOARD OF EDUCATION WEBSITE ACCESSIBILITY

It is the goal of the Board of Education that the information on the school district's website is accessible to individuals with disabilities in compliance with the requirements of Section 504 of the Rehabilitation Act of 1973 and that statute's implementing regulations at 34 C.F.R. Part 104, and Title II of the Americans with Disabilities Act of 1990 and that statute's implementing regulations at 28 C.F.R. Part 35.

For the purposes of this Policy, "school district website" includes, but is not limited to, the internet home page, all subordinate pages, school or school district department pages, intranet pages and sites, and includes online content and functionality, developed by, maintained by, or offered through a third-party vendor or by using open sources.

The accessibility of online content and functionality will be measured according to the World Wide Web Consortium's (W3C) Web Content Accessibility Guidelines (WCAG) 2.0 Level AA and the Web Accessibility Initiative Accessible Rich Internet Application Suite (WAI-ARIA) 1.0 for web content (benchmarks for measuring accessibility).

By conforming to the benchmarks for measuring accessibility set forth above the Board of Education will ensure that people with disabilities have an opportunity equal to that of their nondisabled peers to access the information on the district's website, except where doing so would impose an undue burden or create a fundamental alteration of the district's website. When fundamental alteration or undue burden defenses apply, the district will make reasonable modifications/accommodations for individuals with disabilities in order to provide equally effective alternate access. In providing such access, the district will ensure that to the maximum extent possible individuals with disabilities receive the same benefits or services as their nondisabled peers. To provide equally effective alternate access, alternates are not required to produce the identical result or level of achievement for persons with and without disabilities, but must afford persons with disabilities equal opportunity to obtain the same result, to gain the same benefit, or to reach the same level of achievement.

To ensure that the district's website conforms with the above benchmarks for measuring accessibility, except where doing so would impose an undue burden or create a fundamental alteration of the district's website, the Chief School Administrator will designate a school staff member to act as the Website Accessibility Coordinator. The Coordinator will:

1. Ensure that in-house staff and contractors responsible for webpages and webpage content development are properly trained on the Board of Education's website accessibility policy and procedures;



2. Ensure that all new, newly added, and modified online content and functionality is accessible to people with disabilities as measured by conformance to the above benchmarks by, among other things:
 - a. Checking the hypertext markup language (HTML) of all new webpages on the website to make sure that accessible elements are used, including "alt" tags, long descriptions, and captions, as needed;
 - b. Ensuring that webpages are designed in a manner that allows them to be displayed using a visitor's own settings for color and fonts, and can be navigated with a keyboard;
 - c. If images are used, including photos, graphics, scanned images, or image maps, making sure to include text equivalents for them, using "alt" tags and/or long descriptions for each and ensuring the text equivalents convey the meaningful information presented visually by the image;
 - d. If online forms and tables are used, making those elements accessible;
 - e. Ensuring that videos appearing on the website include appropriately synchronized audio description and captions;
 - f. Ensuring when posting new documents on the website, the documents shall be provided in HTML or another text-based format (even if they are provided in another format, such as portable document format (PDF)). If documents are provided in both formats, provide both formats at the same time so people with disabilities have the same degree of access as others;
 - g. Periodically enlisting people with a variety of disabilities to test the Board of Education's webpages for accessibility and ease of use and use this information to increase the Board's website accessibility;
 - h. Periodically coordinating the audit of existing content and functionality of the website to identify online content or functionality that is inaccessible to persons with disabilities; and
 - i. Developing and carrying out a corrective action plan, when necessary, for making the district's existing web content accessible.



3. Ensure that alternative means are available for people with disabilities to access information, programs, and services that are normally provided on the Board's website.

This Policy establishes minimum standards for the accessibility of web-based information and services considered necessary to meet the district's goals and ensure compliance with applicable law.

Section 504 of the Rehabilitation Act of 1973
Title II of the Americans with Disabilities Act of 1990
34 C.F.R. Part 104; 28 C.F.R. Part 35

Adopted: 18 March 2021



1523 COMPREHENSIVE EQUITY PLAN

The Board of Education shall submit a Comprehensive Equity Plan based on an assessment of the district's needs for achieving equity in educational programs that includes a cohesive set of policies, programs, and practices that ensure high expectations and positive achievement patterns and equal access to education opportunity for all learners, including students and teachers.

The Board's obligation to be accountable for the requirements in N.J.A.C. 6A:7 is not precluded or alleviated by any rule or regulation of any organization, club, athletic association, or other league or group.

The Comprehensive Equity Plan shall include the following:

1. An assessment of the school district's needs for achieving equity in educational programs. The assessment shall include staffing practices, quality-of-program data, stakeholder-satisfaction data, and student assessment and behavioral data disaggregated by gender, race, ethnicity, limited English proficiency, special education, migrant, date of enrollment, student suspension, expulsion, Child Study Team referrals, preschool through grade twelve promotion/retention data, preschool through grade twelve completion rates, and re-examination and re-evaluation of classification and placement of students in special education programs if there is overrepresentation within a certain group;
2. A description of how other Federal, State, and district policies, programs, and practices are aligned to the Comprehensive Equity Plan;
3. Progress targets for closing the achievement gap;
4. Professional development targets regarding the knowledge and skills needed to provide a thorough and efficient education as defined by the New Jersey Student Learning Standards; differentiated instruction and formative assessments aligned to the New Jersey Student Learning Standards; and high expectations for teaching and learning; and
5. Annual targets addressing district needs in equity in school and classroom practices that are aligned to professional development targets.



A Comprehensive Equity Plan shall be written every three years and the Board of Education shall initiate the Comprehensive Equity Plan within sixty days of its approval and shall implement the plan in accordance with the timelines approved by the New Jersey Department of Education.

In the event the Board of Education does not implement the Comprehensive Equity Plan within one hundred eighty days of its approval date, or fails to report its progress annually, sanctions deemed to be appropriate by the Commissioner of Education or his/her designee shall be imposed, and may include action to suspend, terminate, or refuse to award continued Federal or State financial assistance, pursuant to N.J.S.A. 18A:55-2.

N.J.A.C. 6A:7-1.9

Adopted: 18 March 2021



1530 EQUAL EMPLOYMENT OPPORTUNITIES

The Board of Education shall, in accordance with law, guarantee equal employment opportunity throughout the district.

The Board shall ensure all persons shall have equal and bias free access to all categories of employment and equal pay for equal work in this district without regard to the candidate's race, color, creed, religion, national origin, ancestry, age, marital status, affectional or sexual orientation, gender, gender identity or expression, socioeconomic status, or disability, pursuant to N.J.A.C. 6A:7-1.1. The school district's employment applications and pre-employment inquiries conform to the guidelines of the New Jersey Division of Civil Rights.

The Board will use equitable practices that prevent imbalance and isolation based on race, color, creed, religion, national origin, ancestry, age, marital status, affectional or sexual orientation, gender, gender identity or expression, socioeconomic status, or disability among the district's certificated and non-certificated staff and within every category of employment, including administration. Promotions and transfers will be monitored to ensure non-discrimination.

The Board shall not assign, transfer, promote or retain staff, or fail to assign, transfer, promote or retain staff, on the sole basis of race, creed, color, national origin, ancestry, age, marital status, affectional or sexual orientation, gender, gender identity or expression, religion, disability or socioeconomic status, pursuant to N.J.A.C. 6A:7-1.1.

The Board will target underutilized groups in every category of employment. The Board will provide among the faculty of the school role models of diverse racial and cultural backgrounds.

The Board shall not enter into a contract with a person, agency, or organization that discriminates in employment practices or in the provision of benefits or services, on the basis of race, color, creed, religion, national origin, ancestry, age, marital status, affectional or sexual orientation, gender, gender identity or expression, socioeconomic status, or disability, either in employment practices or in the provision of benefits or services to students or employees, pursuant to N.J.A.C. 6A:7-1.1.

The Chief School Administrator shall promulgate a complaint procedure for the adjudication of disputes alleging violation of the law prohibiting discrimination in employment or this policy.

The Board shall not discriminate against any person for that person's exercise of rights under the laws prohibiting discrimination in employment or this policy.

N.J.S.A. 18A:6-5; 18A:6-6; 18A:28-10; 18A:29-2

N.J.A.C. 6A:7-1.1 et seq.; 6A:7-1.8

Adopted: 18 March 2021



REGULATION

NEPTUNE CITY BOARD OF EDUCATION

ADMINISTRATION

R 1530/page 1 of 4

Equal Employment Opportunity Complaint Procedure

M

R 1530 EQUAL EMPLOYMENT OPPORTUNITY COMPLAINT PROCEDURE

A. Purpose and Application

1. The purpose of this procedure is to give any district employee or candidate for employment the opportunity to appeal an alleged denial of equal employment opportunity in violation of State statutes and administrative codes, and Federal laws and Policy 1530, guaranteeing “equal access to all categories of employment without regard to the candidate’s race, color, creed, religion, national origin, ancestry, age, marital status, affectional or sexual orientation, gender, gender identity or expression, socioeconomic status, or disability.”
2. This procedure is intended to facilitate an equitable and just resolution of a dispute at the most immediate level and should be implemented in an informal manner.
3. Every reasonable effort will be made to expedite the process in the interest of a prompt resolution. Time limits may, however, be extended with the consent of all parties.
4. All participants in the procedure will respect the confidentiality that this district accords to information about individual employees.

B. Definitions

1. “Board of Education” means the Board of Education of the Neptune City School District.
2. “Complaint” means an alleged discriminatory act or practice.
3. “Complainant” means a staff member who alleges a discriminatory act or practice.
4. “Day” means a working or calendar day as identified.
5. “Discriminatory act or practice” means denial of equal employment opportunity in violation of State statutes and administrative codes and Federal laws and Policy 1530.
6. “School district” means the Neptune City School District.



C. Procedure

1. A complainant who believes that he/she has been harmed or adversely affected by a discriminatory practice or act prohibited by law and/or policy shall discuss the matter with his/her immediate supervisor in an attempt to resolve the matter informally.
2. If the matter is not resolved to the satisfaction of the complainant within thirty working days, the complainant may submit a written complaint to the Affirmative Action Officer. The complaint will include:
 - a. The complainant's name and address,
 - b. The specific act or practice that the complainant complains of,
 - c. The school employee, if any, responsible for the allegedly discriminatory act,
 - d. The results of discussions conducted in accordance with paragraph C.1., and
 - e. The reasons why those results are not satisfactory.
3. The Affirmative Action Officer will investigate the matter informally and will respond to the complaint in writing no later than seven working days after receipt of the written complaint. A copy of the complaint and the response will be forwarded to the Chief School Administrator.
4. The response of the Affirmative Action Officer may be appealed to the Chief School Administrator in writing within three working days after it has been received by the complainant. The appeal will include the original complaint, the response to the complaint, and the complainant's reason for rejecting the response. A copy of the appeal must be given to the staff member alleged to have acted discriminatorily.
5. On his/her timely request (that is, submitted before the expiration of the time within which the Chief School Administrator must render a decision), the complainant will be given an informal hearing before the Chief School Administrator, at a time and place convenient to the parties, but no later than seven working days after the request for a hearing has been submitted. The Chief School Administrator may also require the presence at the hearing of the staff member charged with a discriminatory act and any other person with knowledge of the act complained of.



REGULATION

NEPTUNE CITY BOARD OF EDUCATION

ADMINISTRATION

R 1530/page 3 of 4

Equal Employment Opportunity Complaint Procedure

6. The Chief School Administrator will render a written decision in the matter no later than seven working days after the appeal was filed or the hearing was held, whichever occurred later. Copies of the decision will be given to all parties.
7. The complainant may appeal the Chief School Administrator's decision to the Board by filing a written appeal with the Board Secretary no later than three working days after receipt of the Chief School Administrator's decision. The appeal shall include:
 - a. The original complaint,
 - b. The response to the complaint,
 - c. The Chief School Administrator's decision,
 - d. A transcript of the hearing, if one has been made, or a summary of the hearing to which all parties have consented, and
 - e. The complainant's reason for believing the Chief School Administrator's decision should be changed.
8. A copy of the appeal to the Board must be given to the staff member, if any, charged with a discriminatory act.
9. The Board will review all papers submitted and may render a decision on the basis of the proceedings below. If the complainant so requests, the Board may convene a hearing, at which all parties may be represented by counsel and may present and examine witnesses, who will testify under oath.
10. The Board will render a written decision no later than forty-five calendar days after the appeal was filed or the hearing held, whichever occurred later. Copies of the decision will be given to all parties.
11. The complainant will be informed of his/her right to appeal the Board's decision to the:
 - a. Commissioner of Education
New Jersey State Department of Education
P.O. Box 500
Trenton, New Jersey 08625-0500
Telephone: (877) 900-6960 or the



REGULATION

NEPTUNE CITY BOARD OF EDUCATION

ADMINISTRATION

R 1530/page 4 of 4

Equal Employment Opportunity Complaint Procedure

- b. New Jersey Division on Civil Rights
Trenton Regional Office
Office of the Attorney General
140 East Front Street – 6th Floor
Trenton, New Jersey 08625-0090
Telephone: (609) 292-4605

D. Record

1. The records of any complaint processed in accordance with this procedure shall be maintained in a file kept by the Affirmative Action Officer.
2. A copy of the decision rendered at the highest level of appeal will be kept in the employee's personnel file.

Issued: 18 March 2021



1540 ADMINISTRATOR'S CODE OF ETHICS

Definitions

"Administrator" means any employee of this school district who holds a position that:

1. Requires certification with the endorsement of school administrator, Principal, or School Business Administrator;
2. Does not require certification but is responsible for making recommendations regarding hiring or the purchase or acquisition of any property or services by the local school district; or
3. Requires certification with the endorsement of supervisor and is responsible for making recommendations regarding hiring or the purchase or acquisition of any property or services by the local school district.

"Business" means any corporation, partnership, firm, enterprise, franchise, association, trust, sole proprietorship, union, political organization, or other legal entity but does not include a school district or other public entity.

"Interest" means the ownership of or control of more than ten percent of the profits, assets, or stock of a business but does not include the control of assets in a labor union.

"Immediate family" means the person to whom the administrator is legally married and any dependent child of the administrator residing in the same household.

Code of Ethics

No administrator or member of his/her immediate family shall have an interest in a business organization or engage in any business, transaction, or professional activity that is in substantial conflict with the proper discharge of his/her duties in the public interest.

No administrator shall use or attempt to use his/her official position to secure unwarranted privileges, advantages, or employment for him/herself, a member of his/her immediate family, or any other person.



No administrator shall act in his/her official capacity in any matter where he/she, a member of his/her immediate family, or a business organization in which he/she has an interest, has a direct or indirect financial or personal involvement that might reasonably be expected to impair his/her independence of judgment in the exercise of official duties. No administrator shall act in his/her official capacity in any matter where he/she or a member of his/her immediate family has a personal involvement that is or creates some benefit to the administrator or a member of his/her immediate family.

No administrator shall undertake any employment or service, whether compensated or not, which might reasonably be expected to prejudice his/her independence of judgment in the exercise of official duties.

No administrator or member of his/her immediate family or business organization in which he/she has an interest shall solicit or accept any gift, favor, loan, political contribution, service, promise of future employment, or other thing of value based upon an understanding that the gift, favor, loan, contribution, service, promise, or other thing of value was given or offered for the purpose of influencing him/her, directly or indirectly, in the discharge of his/her official duties.

No administrator shall accept offers of meals, entertainment, or hospitality which are limited to the clients/customers of the individual providing such hospitality. Administrators may attend hospitality suites or receptions at conferences only when they are open to all attending the conference.

No administrator shall use, or allow to be used, his/her public office or any information not generally available to the members of the public which he/she receives or acquires in the course of and by reason of his/her office, for the purpose of securing financial gain for him/herself, any member of his/her immediate family, or any business organization with which he/she is associated.

No administrator or business organization in which he/she has an interest shall represent any person or party other than the Board of Education or this school district in connection with any cause, proceeding, application or other matter pending before this school district or in any proceeding involving this school district, except that this provision shall not be deemed to prohibit representation within the context of official labor union or similar representational responsibilities.

Nothing shall prohibit an administrator or members of his/her immediate family from representing him/herself or themselves in negotiations or proceedings concerning his/her or their own interests.



Each administrator shall annually, in accordance with N.J.S.A. 18A:12-25 and 18A:12-26, law, file with the Commissioner a disclosure statement report regarding potential conflicts of interest and with the School Ethics Commission a financial disclosure statement.

N.J.S.A. 18A:12-21 through 18A:12-34
School Ethics Policy Guideline 1

Adopted: 18 March 2021



1550 EQUAL EMPLOYMENT/ANTI-DISCRIMINATION PRACTICES

The Board of Education shall, in accordance with State statutes and administrative code and Federal law and regulations, strive to overcome the effects of any previous patterns of discrimination in school district employment practices and shall systematically monitor school district procedures to ensure continuing compliance with anti-discrimination laws and regulations.

The Board will ensure all persons regardless of race, creed, color, national origin, ancestry, age, marital status, affectional or sexual orientation, gender, gender identity or expression, religion, disability, or socioeconomic status shall have equal and bias-free access to all categories of employment in the public educational system of New Jersey, pursuant to N.J.A.C. 6A:7-1.1.

The Board will not enter into any contract with a person, agency, or organization that discriminates on the basis of race, creed, color, national origin, ancestry, age, marital status, affectional or sexual orientation, gender, gender identity or expression, religion, disability, or socioeconomic status, either in employment practices or in the provision of benefits or services to students or employees. In addition, the Board will encourage minority businesses, women's business enterprises, and labor surplus area firms to submit bids to be considered for the awarding of contracts.

The Board shall not assign, transfer, promote or retain staff, or fail to assign, transfer, promote or retain staff, on the sole basis of race, creed, color, national origin, ancestry, age, marital status, affectional or sexual orientation, gender, gender identity or expression, religion, disability, or socioeconomic status.

The Board shall ensure equal pay for equal work among members of the school district's staff, regardless of race, creed, color, national origin, ancestry, age, marital status, affectional or sexual orientation, gender, gender identity or expression, religion, disability, or socioeconomic status, pursuant to N.J.A.C. 6A:7-1.1.

N.J.S.A. 10:5-4

N.J.A.C. 6A:7-1.1 et seq.; 6A:7-1.8

Adopted: 18 March 2021



REGULATION

NEPTUNE CITY BOARD OF EDUCATION

ADMINISTRATION

R 1550/page 1 of 4

Equal Employment/Anti-Discrimination Practices

M

R 1550 EQUAL EMPLOYMENT/ANTI-DISCRIMINATION PRACTICES

A. Purpose and Application

1. The purpose of this procedure is to give any school district employee the opportunity to appeal an alleged violation of the school district's Affirmative Action Program for employment and contract practices, as set forth in Policy 1550 or in a plan formally adopted by the Board of Education and approved by the Commissioner.
2. No qualified handicapped person, shall, on the basis of handicap, be subjected to discrimination in employment and the Board will take positive steps to employ and advance in employment qualified handicapped persons in programs and activities.
3. This procedure is intended to facilitate an equitable and just resolution of a dispute at the most immediate level and should be implemented in an informal manner.
4. Every reasonable effort will be made to expedite the process in the interest of a prompt resolution. Time limits may, however, be extended with the consent of all parties.
5. All participants in the procedure will respect the confidentiality that this school district accords to information about individual staff members.

B. Definitions

1. "Board of Education" means the Board of Education of the Neptune City School District.
2. "Complaint" means an alleged violation of the school district's Affirmative Action Plan or Policy.
3. "Complainant" means a staff member who alleges a violation of the school district's Affirmative Action Plan or Policy 1550.
4. "Day" means a business day or calendar day as identified.
5. "School district" or "district" means the Neptune City School District.



REGULATION

NEPTUNE CITY BOARD OF EDUCATION

ADMINISTRATION

R 1550/page 2 of 4

Equal Employment/Anti-Discrimination Practices

6. "Violation" means the failure of a school district official or employee to take the positive steps outlined in Policy 1550 or the duly approved Affirmative Action Plan to remove impermissible bias or preference from all aspects of school district employment or contract practices and/or to correct the results of past discrimination.

C. Procedure

1. A Complainant who believes he/she has been harmed or adversely affected by a failure to enforce the school district's Affirmative Action Plan for employment and contract practices shall discuss the matter with his/her immediate supervisor in an attempt to resolve the matter informally.
 - a. In the event the Complainant believes their immediate supervisor may be conflicted or if the immediate supervisor is not available, the Complainant may proceed directly to the school district's Affirmative Action Officer as outlined in C.2. below.
 - b. In the event the Complainant believes the school district's Affirmative Action Officer may be conflicted, the Complainant may submit a written complaint to the Chief School Administrator who will designate a supervisor or administrative staff member to conduct the investigation in accordance with the procedures outlined in this Regulation. The Chief School Administrator will ensure the supervisor or administrative staff member is provided affirmative action training in accordance with State mandates and guidelines.
2. If the matter is not resolved to the satisfaction of the Complainant within ten business days, the Complainant may submit a written complaint to the Affirmative Action Officer. The complaint will include:
 - a. The Complainant's name and address;
 - b. The specific failure to act that the Complainant complains of;
 - c. The school officer or employee, if any, responsible for the alleged violation of the Affirmative Action Plan;
 - d. The results of discussions conducted in accordance with paragraph C.1.; and
 - e. The reasons why those results are not satisfactory.



REGULATION

NEPTUNE CITY BOARD OF EDUCATION

ADMINISTRATION

R 1550/page 3 of 4

Equal Employment/Anti-Discrimination Practices

3. The Affirmative Action Officer will investigate the matter informally and will respond to the complaint in writing no later than seven business days after receipt of the written complaint. A copy of the complaint and the response will be forwarded to the Chief School Administrator.
4. The response of the Affirmative Action Officer may be appealed to the Chief School Administrator in writing within three business days after it has been received by the Complainant. The appeal will include the original complaint, the response to the complaint, and the Complainant's reason for rejecting the response. A copy of the appeal must be given to the staff member alleged to have violated the Affirmative Action Plan.
5. Upon request, the Complainant will be given an informal hearing before the Chief School Administrator, at a time and place convenient to the parties, but no later than seven business days after the request for a hearing has been submitted. The Chief School Administrator may also require the presence at the hearing of the staff member charged with violation of the Affirmative Action Plan and any other person with knowledge of the violation complained of.
6. The Chief School Administrator will render a written decision in the matter no later than seven business days after the appeal was filed or the hearing was held, whichever occurred later. Copies of the decision will be given to all parties.
7. The Complainant may appeal the Chief School Administrator's decision to the Board by filing a written appeal with the Board Secretary no later than three business days after receipt of the Chief School Administrator's decision. The appeal will include:
 - a. The original complaint;
 - b. The response to the complaint;
 - c. The Chief School Administrator's decision;
 - d. A transcript of the hearing, if one has been made, or a summary of the hearing to which all parties have consented; and
 - e. The Complainant's reason for believing the Chief School Administrator's decision should be changed.



REGULATION

NEPTUNE CITY BOARD OF EDUCATION

ADMINISTRATION

R 1550/page 4 of 4

Equal Employment/Anti-Discrimination Practices

8. A copy of the appeal to the Board must be given to the staff member, if any, charged with a violation of the Affirmative Action Plan.
9. The Board will review all papers submitted and may render a decision on the basis of the proceedings below. If the Complainant so requests, the Board may convene a hearing, at which all parties may be represented by counsel and may present and examine witnesses, who will testify under oath.
10. The Board will render a written decision no later than forty-five calendar days after the appeal was filed or the hearing held, whichever occurred later. Copies of the decision will be given to all parties.
11. The Complainant will be informed of his/her right to appeal the Board's decision to the:
 - a. Commissioner of Education
New Jersey State Department of Education
P.O. Box 500
Trenton, New Jersey 08625-0500, or
 - b. New Jersey Division on Civil Rights
Central Regional Office
140 East Front Street – 6th Floor
Trenton, New Jersey 08625-0090

D. Record

1. The records of any complaint processed in accordance with this procedure shall be kept in a file maintained by the Affirmative Action Officer.
2. A copy of the decision rendered at its highest level of appeal will be kept in the Complainant's personnel file.

Issued: 18 March 2021



1570 INTERNAL CONTROLS

As a condition of receiving State aid, the school district shall establish specific policies and procedures on internal controls designed to provide management with reasonable assurance that the district's goals and objectives will be met and that meet the requirements of N.J.A.C. 6A:23A-6.5 through N.J.A.C. 6A:23A-6.13. Internal controls shall promote operational efficiency and effectiveness, provide reliable financial information, safeguard assets and records, encourage adherence to prescribed policies, and comply with law and regulation.

The specific internal controls contained in N.J.A.C. 6A:23A-6 shall be established together with other internal controls contained in N.J.A.C. 6A and other law and regulations, required by professional standards and as deemed necessary and appropriate by district management. The district may submit a written request to the Commissioner to approve an alternative system, approach, or process for implementing the internal controls required in N.J.A.C. 6A:23A-6. The application must include documented evidence that includes, but is not limited to, an independent, third-party written assessment that the alternative system, approach or process will achieve the same safeguards, efficiency, and other purposes as the specified internal control requirement(s).

The school district shall evaluate business processes annually and allocate available resources appropriately in an effort to establish a strong control environment pursuant to the requirements of N.J.A.C. 6A:23A-6.5. In accordance with the provisions of N.J.A.C. 6A:23A-6.5(b), the School Business Administrator/Board Secretary shall identify processes that, when performed by the same individuals, are a violation of sound segregation of duties and shall segregate the duties of all such processes among Business office staff based on available district resources, assessed vulnerability, and associated cost-benefit. The district shall include in the Comprehensive Annual Financial Report (CAFR) a detailed organizational chart for the Central office that tie to the district's position control logs, including but not limited to, the business, human resources, and information management functions.

The school district shall establish Standard Operating Procedures (SOPs) for each task or function of the business operations of the district by December 31, 2009. The SOP Manual shall include sections on each routine task or function as outlined in N.J.A.C. 6A:23A-6.6(b) and 6A:23A-6.6(c). A standard operating procedure shall be established that ensures office supplies are ordered in appropriate quantities, maintained in appropriate storage facilities, and monitored to keep track of inventory.



School districts with budgets in excess of \$25,000,000 or with more than three hundred employees shall maintain an Enterprise Resource Planning (ERP) System which integrates all data and processes of the school district into a unified system. The ERP system shall use multiple components of computer software and hardware and a unified database to store data for the various system modules to achieve the integration. Districts required to maintain an ERP System that do not have an ERP System in place on July 1, 2008 shall fully implement an ERP System by the 2010-2011 school year and maintain both the existing system(s) and run a beta test ERP System during the 2009-2010 school year. Whenever considering financial systems or the automation of other services or functions, the Chief School Administrator or School Business Administrator/Board Secretary shall notify the Executive County Superintendent in writing to see if opportunities for a shared service system exist. Access controls shall be established for key elements of financial systems to ensure that a single person does not have the ability to make system edits that would violate segregation of duties controls.

The school district shall maintain an accurate, complete, and up-to-date automated position control roster to track the actual number and category of employees and the detailed information for each. Districts are required to maintain a position control roster by December 31, 2009. The position control roster shall share a common database and be integrated with the district's payroll system, agree to the account codes in the budget software, and ensure that the data within the position control roster system includes, at a minimum, the required information as required in N.J.A.C. 6A:23A-6.8(a)3.

N.J.A.C. 6A:23A-6.4; 6A:23A-6.5; 6A:23A-6.6; 6A:23A-6.7; 6A:23A-6.8

Adopted: 18 March 2021



R 1570 INTERNAL CONTROLS

A. Segregation of Business Duties and Organizational Structure

1. The school district shall evaluate business processes annually and allocate available resources appropriately in an effort to establish a strong control environment.
2. The School Business Administrator/Board Secretary shall identify processes that when performed by the same individuals are a violation of sound segregation of duties. The School Business Administrator/Board Secretary shall segregate the duties of all such processes among Business office staff based on available district resources, assessed vulnerability and the associated cost-benefit, except as required by a. and b. below.
 - a. The functions of human resources and payroll shall be segregated and completed by different employees in all districts.
 - b. The functions of purchasing and accounts payable shall be segregated and completed by different employees in all districts.
3. The district shall include in the Comprehensive Annual Financial Report (CAFR) a detailed organizational chart for the Central Office that tie to the district's position control logs, including but not limited to, the business, human resources, and information management functions.

B. Standard Operating Procedures (SOPs) for Business Functions

1. The school district shall establish SOPs for each task or function of the business operations of the district by December 31, 2009.
2. The SOP Manual shall include sections on each routine task or function of the following areas:
 - a. Accounting including general ledger, accounts payable, accounts receivable, payroll and fixed assets, and year-end procedures for each;
 - b. Cash management;



REGULATION

NEPTUNE CITY BOARD OF EDUCATION

ADMINISTRATION
R 1570/page 2 of 6
Internal Controls

- c. Budget development and administration including tasks such as authorization of transfers and overtime;
 - d. Position control;
 - e. Purchasing including such tasks as preparation of requisitions, approval of purchase orders and encumbering of funds, bid and quote requirements, and verification of receipt of goods and services;
 - f. Facilities including administration of work and health and safety;
 - g. Security;
 - h. Emergency preparedness;
 - i. Risk management;
 - j. Transportation;
 - k. Food service;
 - l. Technology systems; and
 - m. Information management.
3. A standard operating procedure shall be established that ensures office supplies are ordered in appropriate quantities, maintained in appropriate storage facilities, and monitored to keep track of inventory.

C. Financial and Human Resource Management Systems, Access Controls

- 1. School districts with budgets in excess of \$25,000,000 or with more than 300 employees shall maintain an Enterprise Resource Planning (ERP) System which integrates all data and processes of the school district into a unified system. The ERP system shall use multiple components of computer software and hardware and a unified database to store data for the various system modules to achieve the integration.
 - a. Districts affected by C.1. above that do not have an ERP system in place on July 1, 2008 shall fully implement one by the 2010-2011 school year and maintain both the existing system(s) and run a beta test ERP system during the 2009-2010 school year.



2. Whenever considering financial systems or the automation of other services or functions, the Chief School Administrator or School Business Administrator/Board Secretary shall notify the Executive County Superintendent in writing to see if opportunities for a shared service system exist.
3. Access controls shall be established for key elements of financial systems to ensure that a single person does not have the ability to make system edits that would violate segregation of duties controls.
 - a. The process for creating, modifying, and deleting user accounts shall include the use of user access request forms.
 - b. All requests for financial applications shall be approved and specified by the School Business Administrator/Board Secretary.
 - c. All requests for network access shall be granted by the head of the technology department, if one exists.
 - d. A review of user access shall be conducted yearly at a minimum by the relevant department managers and an audit trail should be maintained to verify the performance of this review.
 - e. Access to the network and key applications within a district shall be restricted to authorized users through the use of unique user names and passwords.
 - f. Proper protocols shall be implemented that appropriately address password expiration and complexity.

D. Personnel Tracking and Accounting

1. The school district shall maintain an accurate, complete, and up-to-date automated position control roster to track the actual number and category of employees and the detailed information for each. Districts are required to maintain a position control roster by December 31, 2009. The position control roster shall:
 - a. Share a common database and be integrated with the district's payroll system;
 - b. Agree to the account codes in the budget software;



- c. Ensure that the data within the position control roster system includes, at a minimum, the following information:
- (1) The employee's name;
 - (2) The date of hire;
 - (3) A permanent position tracking number for each employee including:
 - (a) The expenditure account codes for the general fund consistent with the State prescribed budget, special revenue fund and enterprise funds;
 - (b) The building(s) the position is assigned;
 - (c) The certification title and endorsement held, as applicable;
 - (d) The assignment position title as follows:
 - i. Superintendent or Chief School Administrator;
 - ii. Assistant Chief School Administrator;
 - iii. School Business Administrator;
 - iv. Board Secretary (when other than i., ii., or iii. above);
 - v. Principal;
 - vi. Vice Principal;
 - vii. Director;
 - viii. Supervisor;
 - ix. Facilitator;
 - x. Instructional Coach by Subject Area;
 - xi. Department Chairperson by Subject Area;



REGULATION

NEPTUNE CITY BOARD OF EDUCATION

ADMINISTRATION
R 1570/page 5 of 6
Internal Controls

- xii. Certificated Administrator – Other;
- xiii. Guidance;
- xiv. Media Specialist/Librarian;
- xv. School Nurse;
- xvi. Social Worker;
- xvii. Psychologist;
- xviii. Therapist – OT;
- xix. Therapist – PT;
- xx. Therapist – Speech;
- xxi. Certificated Support Staff – Other;
- xxii. Teacher by Subject Area;
- xxiii. Instructional Assistants;
- xxiv. Certificated Instructional-Other;
- xxv. Aides supported by IEP;
- xxvi. Other Aides;
- xxvii. Maintenance Worker;
- xxviii. Custodian;
- xxix. Bus Driver;
- xxx. Vehicle Mechanic;
- xxxi. Food Service; and
- xxxii. Other Non-certificated.



REGULATION

NEPTUNE CITY BOARD OF EDUCATION

ADMINISTRATION

R 1570/page 6 of 6

Internal Controls

- (4) A control number for substitute teachers;
- (5) A control number for overtime;
- (6) A control number for extra pay;
- (7) The status of the position (filled, vacant, abolished, etc.);
- (8) An indication, when available, of whether the employee is retiring in the budget year or not being renewed including associated costs such as contractual buyouts, severance pay, paid vacation or sick days, etc.;
- (9) Each of the following: base salary, step, longevity, guide, stipends by type, overtime and other extra compensation;
- (10) The benefits paid by the district, net of employee reimbursements or co-pays, by type of benefit and for FICA and Medicare;
- (11) The position's full-time equivalent value by location;
- (12) The date the position was filled; and
- (13) The date the position was originally created by the Board. If the date the position was originally created is not available, this item shall represent the date the person currently filling that position was approved by the Board.

Issued: 18 March 2021



1581 DOMESTIC VIOLENCE

Policy and Regulation 1581 - Section A. sets forth the New Jersey Civil Service Commission's Uniform Domestic Violence Policy that all public employers shall adopt and distribute to all their employees in accordance with the requirements of N.J.S.A. 11A:2-6a. The purpose of the Uniform Domestic Violence Policy is to encourage public employees who are victims of domestic violence, and those impacted by domestic violence, to seek assistance from their public employer's human resources officer(s) and to provide a standard for a public employer's human resources officer(s) to follow when responding to employees.

Policy and Regulation 1581 – Section B. provides employment protection for employees of those employers as defined in N.J.S.A. 34:11C-2, who are victims of domestic violence or sexual violence in accordance with the provisions of the New Jersey Security and Financial Empowerment Act (NJ SAFE Act) - N.J.S.A. 34:11C-1 et seq.

A. Uniform Domestic Violence Policy (N.J.S.A. 11A:2-6a)

All New Jersey public employees are covered under N.J.S.A. 11A:2-6a and Policy and Regulation 1581 – Section A. All public employers shall designate a Human Resources Officer (HRO) or equivalent to assist employees who are victims of domestic violence. The name and contact information of the designated HRO must be provided to all employees. Managers and supervisors are required to refer any employee who is experiencing domestic violence or who report witnessing domestic violence to the designated HRO.

Employees who are victims of domestic violence are encouraged to seek immediate assistance from their HRO. Employees who have information about or witness an act of domestic violence against an employee are encouraged to report that information to the designated HRO, unless the employee is required to report the domestic violence pursuant to applicable laws, guidelines, standard operating procedures, internal affairs policies, or New Jersey Attorney General directives and guidelines that impose a duty to report, in which case the employee must report to the appropriate authority in addition to reporting to the designated HRO.

Nothing in the Uniform Domestic Violence Policy and Policy and Regulation 1581 – Section A. shall preclude an employee from contacting 911 in emergency situations. HROs shall remind employees to contact 911 if they feel they are in immediate danger.



Each designated HRO shall comply with the requirements outlined in Regulation 1581 – Section A.4.d. In responding to reports of domestic violence, the HRO shall seek to maintain confidentiality to protect an employee making a report of, witnessing, or experiencing domestic violence, to the extent practical and appropriate under the circumstances and allowed by law.

To ensure confidentiality and accuracy of information, the Uniform Domestic Violence Policy 1581 and Regulation 1581 – Section A.6. require the HRO to keep all documents and reports of domestic violence in a confidential personnel file separate from the employee's other personnel records.

Public employers in the State of New Jersey shall develop an action plan to identify, respond to, and correct employee performance issues that are caused by domestic violence, pursuant to N.J.S.A. 11A:2-6a, and in accordance with the guidelines outlined in Regulation 1581 - Section A.7.

Resources and program information will be readily available to assist victims of domestic violence.

A public employer may seek to modify Policy and Regulation 1581 to create additional protocols to protect victims of domestic violence, but may not modify in a way that reduces or compromises the safeguards and processes set in the Uniform Domestic Violence Policy.

- B. The New Jersey Security and Financial Empowerment Act – (N.J.S.A. 34:11C-1 et seq. - NJ SAFE Act)

The New Jersey Security and Financial Empowerment Act, N.J.S.A. 34:11C-1 et seq. (NJ SAFE Act), is a law that provides employment protection for victims of domestic or sexual violence. Any employee of an employer in the State of New Jersey as defined in N.J.S.A. 34:11C-2, who was a victim of an incident of domestic violence as defined in N.J.S.A. 2C:25-19, or a sexually violent offense as defined in N.J.S.A. 30:4-27.26, or whose parent-in-law, sibling, grandparent, grandchild, child, parent, spouse, domestic partner, or civil union partner individual, or any other individual related by blood to the employee, and any other individual that the employee shows to have a close association with the employee which is the equivalent of a family relationship, was a victim shall be entitled to unpaid leave of no more than twenty days in one twelve-month period, to be used in the twelve-month period next following any incident of domestic violence or any sexually violent offense as provided in N.J.S.A. 34:11C-3.



The unpaid leave may be taken intermittently in intervals of no less than one day, as needed for the purpose of engaging in the activities outlined in N.J.S.A. 34:11C-3 and Regulation 1581 - Section B.3.a.(1)-(6) as they relate to the incident of domestic violence or sexually violent offense as outlined in Regulation 1581 - Section B.3.b.

An eligible employee may elect to use any accrued paid vacation leave, personal leave, or medical or sick leave of the employee, or any family temporary disability leave benefits provided pursuant to N.J.S.A. 43:21-27 during any part of the twenty-day period of unpaid leave provided under N.J.S.A. 34:11C-3.a.

Prior to taking the leave provided for in N.J.S.A. 34:11C-3 and Regulation 1581 - Section B., an employee shall, if the necessity for the leave is foreseeable, provide the employer with written notice of the need for the leave, unless an emergency or other unforeseen circumstance precludes prior notice. The notice shall be provided to the employer as far in advance as is reasonable and practical under the circumstances.

Nothing contained in the NJ SAFE Act (N.J.S.A. 34:11C-1 et seq.) and Regulation 1581 - Section B., shall be construed to prohibit an employer from requiring that a period of leave provided pursuant to N.J.S.A. 34:11C-3 and Regulation 1581 - Section B. be supported by the employee with documentation of the domestic violence or sexually violent offense which is the basis for the leave. If the employer requires documentation, the employee shall be regarded as having provided sufficient documentation if the employee provides supporting documentation outlined in N.J.S.A. 34:11C-3.c and Regulation 1581 - Section B.3.d.

An employer shall display conspicuous notice of its employees' rights and obligations pursuant to the provisions of the NJ SAFE Act.

An employer shall not discharge, harass, or otherwise discriminate, retaliate, or threaten to discharge, harass, or otherwise discriminate or retaliate against an employee with respect to the compensation, terms, conditions, or privileges of employment on the basis that the employee took or requested any leave to which the employee was entitled pursuant to N.J.S.A. 34:11C-3 of the NJ SAFE Act or on the basis that the employee refused to authorize the release of information deemed confidential pursuant to N.J.S.A. 34:11C-3.f of the NJ SAFE Act.

Upon a violation of any of the provisions N.J.S.A. 34:11C-3 or N.J.S.A. 34:11C-4, an employee or former employee may institute a civil action in the Superior Court for relief. All remedies available in common law tort actions shall be available to a prevailing



plaintiff. The Court may also order any or all of the relief outlined in N.J.S.A. 34:11C-5. An action brought under N.J.S.A. 34:11C-5 shall be commenced within one year of the date of the alleged violation. A private cause of action provided for in N.J.S.A. 34:11C-5 shall be the sole remedy for a violation of the NJ SAFE Act.

N.J.S.A. 11A:2-6a

N.J.S.A. 34:11C-1 et seq.

New Jersey Civil Service Commission's Uniform Domestic
Violence Policy

Adopted: 18 March 2021



R 1581 DOMESTIC VIOLENCE

Policy and Regulation 1581 - Section A. sets forth the New Jersey Civil Service Commission's (Civil Service Commission) Uniform Domestic Violence Policy that all public employers shall adopt and distribute to all their employees in accordance with the provisions of N.J.S.A. 11A:2-6a. The purpose of the Uniform Domestic Violence Policy is to encourage public employees who are victims of domestic violence, and those impacted by domestic violence, to seek assistance from their public employer's human resources officer(s) and provide a standard for a public employer's human resources officer(s) to follow when responding to employees.

Policy and Regulation 1581 – Section B. provides employment protection for employees of those employers as defined in N.J.S.A. 34:11C-2, who are victims of domestic violence or sexual violence in accordance with the provisions of the New Jersey Security and Financial Empowerment Act (NJ SAFE Act) - N.J.S.A. 34:11C-1 et seq.

A. Uniform Domestic Violence Policy (N.J.S.A. 11A:2-6a)

1. Definitions

The following terms are defined solely for the purposes of N.J.S.A. 11A:2-6a and Policy and Regulation 1581:

“Domestic Violence” - Acts or threatened acts, that are used by a perpetrator to gain power and control over a current or former spouse, family member, household member, intimate partner, someone the perpetrator dated, or person with whom the perpetrator shares a child in common or anticipates having a child in common if one of the parties is pregnant. Domestic violence includes, but is not limited to the following: physical violence; injury; intimidation; sexual violence or abuse; emotional and/or psychological intimidation; verbal abuse; threats; harassment; cyber harassment; stalking; economic abuse or control; damaging property to intimidate or attempt to control the behavior of a person in a relationship with the perpetrator; strangulation; or abuse of animals or pets.

“Abuser/Perpetrator” - An individual who commits or threatens to commit an act of domestic violence, including unwarranted violence against individuals and animals. Other abusive behaviors and forms of violence can include the following: bullying, humiliating, isolating, intimidating, harassing, stalking, or threatening the victim, disturbing someone's peace, or destroying someone's property.



“Human Resources Officer (HRO)” - An employee of a public employer with a human resources job title, or its equivalent, who is responsible for orienting, training, counseling, and appraising staff. Persons designated by the employer as the primary or secondary contact to assist employees in reporting domestic violence incidents.

“Intimate Partner” - Partners of any sexual orientation or preference who have been legally married or formerly married to one another, have a child or children in common, or anticipate having a child in common if one party is pregnant. Intimate partner also includes those who live together or have lived together, as well as persons who are dating or have dated in the past.

“Temporary Restraining Order (TRO)” - A civil court order issued by a judge to protect the life, health, or well-being of a victim. TROs can prohibit domestic violence offenders from having contact with victims, either in person or through any means of communication, including third parties. TROs also can prohibit offenders from a victim’s home and workplace. A violation of a TRO may be a criminal offense. A TRO will last approximately ten business days, or until a court holds a hearing to determine if a Final Restraining Order (FRO) is needed. In New Jersey, there is no expiration of a FRO.

“Victim” - A person who is eighteen years of age or older or who is an emancipated minor and who has been subjected to domestic violence by a spouse, former spouse, or any other person who is a present household member or was at any time a household member. A victim of domestic violence is also any person, regardless of age, who has been subjected to domestic violence by one of the following factors: a person with whom the victim has a child in common; a person with whom the victim anticipates having a child in common, if one of the parties is pregnant; and a person with whom the victim has had a dating relationship.

“Workplace-Related Incidents” - Incidents of domestic violence, sexual violence, dating violence, and stalking, including acts, attempted acts, or threatened acts by or against employees, the families of employees, and/or their property, that imperil the safety, well-being, or productivity of any person associated with a public employee in the State of New Jersey, regardless of whether the act occurred in or outside the organization’s physical workplace. An employee is considered to be in the workplace while in or using the resources of the employer. This includes, but is not limited to: facilities; work sites; equipment; vehicles; or while on work-related travel.



2. Persons Covered Under N.J.S.A. 11A:2-6a and Policy and Regulation 1581

All New Jersey public employees are covered under N.J.S.A. 11A:2-6a and Policy and Regulation 1581 – Section A. A State of New Jersey public employer is any State, county, municipality, school district, or other political subdivision thereof, and any agency, authority, or instrumentality of the foregoing. Casual/seasonal employees, interns, volunteers, and temporary employees of any public employer at any workplace location are also covered under N.J.S.A. 11A:2-6a and Regulation 1581 – Section A.

3. Responsibility of Employer to Designate a Human Resources Officer (HRO)

- a. All public employers shall designate an HRO to assist employees who are victims of domestic violence.
- b. The designated HRO must receive training on responding to and assisting employees who are domestic violence victims in accordance with Policy and Regulation 1581 – Section A. Should the HRO be unavailable at any time, the employer must designate a secondary HRO, who must also be appropriately trained to respond and assist domestic violence victims pursuant to Policy and Regulation 1581.
- c. Managers and supervisors are often aware of circumstances involving an employee who is experiencing domestic violence. Managers and supervisors are required to refer any employee who is experiencing domestic violence or who report witnessing domestic violence to the designated HRO. Managers and supervisors must maintain confidentiality, to the extent possible, and be sensitive, compassionate, and respectful to the needs of persons who are victims of domestic violence.
 - (1) The name and contact information of the designated HRO must be provided to all employees.
- d. Policy and Regulation 1581 – Section A. does not supersede applicable laws, guidelines, standard operating procedures, internal affairs policies, or New Jersey Attorney General directives and guidelines that impose a duty to report.



- (1) For example, if there is any indication a child may also be a victim, reporting is mandatory to the Department of Children and Families, Child Protection and Permanency, under N.J.S.A. 9:6-8.13.

4. Domestic Violence Reporting Procedure

- a. Employees who are victims of domestic violence are encouraged to seek immediate assistance from their HRO.
- b. Employees who have information about or witness an act of domestic violence against an employee are encouraged to report that information to the designated HRO, unless the employee is required to report the domestic violence pursuant to applicable laws, guidelines, standard operating procedures, internal affairs policies, or New Jersey Attorney General directives and guidelines that impose a duty to report, in which case the employee must report to the appropriate authority in addition to reporting to the designated HRO.
- c. Nothing in Policy and Regulation 1581 – Section A. shall preclude an employee from contacting 911 in emergency situations. HROs shall remind employees to contact 911 if they feel they are in immediate danger.
- d. Each designated HRO shall:
 - (1) Immediately respond to an employee upon request and provide a safe and confidential location to allow the employee to discuss the circumstances surrounding the domestic violence incident and the request for assistance.
 - (2) Determine whether there is an imminent and emergent need to contact 911 and/or local law enforcement.
 - (3) Provide the employee with resource information and a confidential telephone line to make necessary calls for services for emergent intervention and supportive services, when appropriate. The HRO or the employee can contact the appropriate Employee Assistance Program to assist with securing resources and confidential services.



- (4) Refer the employee to the provisions and protections of the New Jersey Security and Financial Empowerment Act, N.J.S.A. 34:11C-1 et seq. (NJ SAFE Act), referenced in Regulation 1581 - Section B.
- (5) In cases where domestic violence involved a sexual touching or sexual assault between State employees, the HRO is also required to report the incident to their agency's Equal Employment Opportunity (EEO) Officer or Title IX Officer, as appropriate.
- (6) If there is a report of sexual assault or abuse, the victim should be offered the services of the New Jersey State Sexual Assault Response Team.
- (7) Maintain the confidentiality of the employee and all parties involved, to the extent practical and appropriate under the circumstances, pursuant to A.5. below.
- (8) Upon the employee's consent, the employee may provide the HRO with copies of any TROs, FROs, and/or civil restraint agreements that pertain to restraints in the work place and ensure that security personnel are aware of the names of individuals who are prohibited from appearing at the work location while the employee who sought the restraining order is present. All copies of TROs and FROs must be kept in a separate confidential personnel file.

5. Confidentiality Policy

- a. In responding to reports of domestic violence, the HRO shall seek to maintain confidentiality to protect an employee making a report of, witnessing, or experiencing domestic violence, to the extent practical and appropriate under the circumstances and allowed by law.
- b. No provision of Policy and Regulation 1581 – Section A. shall supersede applicable laws, guidelines, standard operating procedures, internal affairs policies, or New Jersey Attorney General directives and guidelines that impose a duty to report.



- c. Policy 1581 and Regulation 1581 – Section A.5. shall not prevent disclosure where to do so would result in physical harm to any person or jeopardize safety within the workplace.
 - (1) When information must be disclosed to protect the safety of individuals in the workplace, the HRO shall limit the breadth and content of such disclosure to information reasonably necessary to protect the safety of the disclosing employee and others and comply with the law.
 - (2) The HRO shall provide advance notice to the employee who disclosed information, to the extent possible, if the disclosure must be shared with other parties in order to maintain safety in the workplace or elsewhere.
 - (3) The HRO shall also provide the employee with the name and title of the person to whom they intend to provide the employee's statement and shall explain the necessity and purpose regarding the disclosure.
 - (a) For example, if the substance of the disclosure presents a threat to employees, then law enforcement will be alerted immediately.
 - d. Policy 1581 and Regulation 1581 – Section A. does not supersede applicable laws, guidelines, standard operating procedures, internal affairs policies, or New Jersey Attorney General directives and guidelines where mandatory reporting is required by the appointing authority or a specific class of employees.
6. Confidentiality of Employee Records
- a. To ensure confidentiality and accuracy of information Policy and Regulation 1581 – Section A.6. requires the HRO to keep all documents and reports of domestic violence in a confidential personnel file separate from the employee's other personnel records.
 - b. These records shall be considered personnel records and shall not be government records available for public access under the Open Public Records Act. See N.J.S.A. 47:1A-10.



7. Public Employer Domestic Violence Action Plan

- a. Public employers in the State of New Jersey shall develop an action plan to identify, respond to, and correct employee performance issues that are caused by domestic violence, pursuant to N.J.S.A. 11A:2-6a, and in accordance with the following guidelines:
 - (1) Designate an HRO with responsibilities pursuant to A.3. and A.4. above.
 - (2) Recognize that an employee may need an accommodation as the employee may experience temporary difficulty fulfilling job responsibilities.
 - (3) Provide reasonable accommodations to ensure the employee's safety. Reasonable accommodations may include, but are not limited to, the following: implementation of safety measures; transfer or reassignment; modified work schedule; change in work telephone number or work-station location; assistance in documenting the violence occurring in the workplace; an implemented safety procedure; or other accommodation approved by the employer.
 - (4) Advise the employee of information concerning the NJ SAFE Act; Family and Medical Leave Act (FMLA); or Family Leave Act (FLA); Temporary Disability Insurance (TDI); or Americans with Disabilities Act (ADA); or other reasonable flexible leave options when an employee, or his or her child, parent, spouse, domestic partner, civil union partner, or other relationships as defined in applicable statutes is a victim of domestic violence.
 - (5) Commit to adherence of the provisions of the NJ SAFE Act, including that the employer will not retaliate against, terminate, or discipline any employee for reporting information about incidents of domestic violence, as defined in Policy and Regulation 1581 – Section A., if the victim provides notice to their human resources office of the status or if the human resources office has reason to believe an employee is a victim of domestic violence.



- (6) Advise any employee, who believes he or she has been subjected to adverse action as a result of making a report pursuant to Policy and Regulation 1581 - Section B. of the civil right of action under the NJ SAFE Act.
 - (a) Advise any employee to contact their designated Labor Relations Officer, Conscientious Employees Protection Act (CEPA) Officer, and/or Equal Employment Opportunity Officer in the event they believe the adverse action is a violation of their collective bargaining agreement, the Conscientious Employees Protection Act, or the New Jersey Law Against Discrimination and corresponding policies.
- (7) Employers, their designated HRO, and employees should familiarize themselves with Policy and Regulation 1581. Policy and Regulation 1581 shall be provided to all employees upon Board approval and to all new employees upon hiring.
- (8) Information and resources about domestic violence are encouraged to be placed in visible areas, such as restrooms, cafeterias, breakrooms, and where other resource information is located.

8. Resources

Resources and program information will be readily available to assist victims of domestic violence. These resources should be provided by the designated HRO to any victim of domestic violence at the time of reporting.

9. Distribution of Policy

The Civil Service Commission and the Division of Local Government Services in the Department of Community Affairs shall distribute a Uniform Domestic Violence Policy, and any modifications thereto, to public employers. The Director of the Division of Local Government Services shall release Local Finance Notices setting forth any changes to the Uniform Domestic Violence Policy, as changes occur.



10. Other Applicable Requirements

In addition to Policy and Regulation 1581, the HRO and the public employer's appointing authority, if applicable, must follow all applicable laws, guidelines, standard operating procedures, internal affairs policies, and New Jersey Attorney General directives and guidelines that impose a duty to report. Additionally, to the extent that the procedures set forth in Policy and Regulation 1581 conflict with collective negotiated agreements or with the Family Educational Rights and Privacy Act (FERPA), the provisions of the negotiated agreements and the provisions of FERPA control.

11. Policy Modification and Review

- a. A public employer may seek to modify Policy and Regulation 1581 to create additional protocols to protect victims of domestic violence, but may not modify in a way that reduces or compromises the safeguards and processes set out in the Uniform Domestic Violence Policy.
- b. The Civil Service Commission will review and modify their Uniform Domestic Violence Policy periodically and as needed.

12. Policy Enforceability

The provisions of the Uniform Domestic Violence Policy are intended to be implemented by the Civil Service Commission. These provisions do not create any promises or rights that may be enforced by any persons or entities.

13. Policy Inquiries and Effective Date

Any questions concerning the interpretation or implementation of the Uniform Domestic Violence Policy shall be addressed to the Chair/Chief Executive Officer of the Civil Service Commission, or their designee. The Uniform Domestic Violence Policy and Policy and Regulation 1581 shall be enforceable upon the HRO's completion of training on the Uniform Domestic Violence Policy and Policy and Regulation 1581.

B. NJ SAFE Act – (N.J.S.A. 34:11C-1 et seq.)

1. The New Jersey Security and Financial Empowerment Act, N.J.S.A. 34:11C-1, et seq. (NJ SAFE Act), is a law that provides employment protection for victims of domestic or sexual violence.



2. Definitions (N.J.S.A. 34:11C-2)

The following terms are defined solely for the purpose of N.J.S.A. 34:11C-1 et seq. - NJ SAFE Act:

“Employee” means a person who is employed for at least twelve months by an employer, with respect to whom benefits are sought under the NJ SAFE Act, for not less than 1,000 base hours during the immediately preceding twelve-month period. Any time, up to a maximum of ninety calendar days, during which a person is laid off or furloughed by an employer due to that employer curtailing operations because of a state of emergency declared after October 22, 2012, shall be regarded as time in which the person is employed for the purpose of determining eligibility for leave time under the NJ SAFE Act. In making the determination, the base hours per week during the layoff or furlough shall be deemed to be the same as the average number of hours worked per week during the rest of the twelve-month period.

“Employer” means a person or corporation, partnership, individual proprietorship, joint venture, firm or company, or other similar legal entity which engages the services of an employee and employs twenty-five or more employees for each working day during each of twenty or more calendar work weeks in the then current or immediately preceding calendar year. “Employer” includes the State, any political subdivision thereof, and all public offices, agencies, boards, or bodies.

“State of emergency” means a natural or man-made disaster or emergency for which a state of emergency has been declared by the President of the United States or the Governor, or for which a state of emergency has been declared by a municipal emergency management coordinator.

3. Regulations Relative to Unpaid Leave for Employees and Family Members Affected by Certain Offenses (N.J.S.A. 34:11C-3)

- a. Any employee of an employer in the State of New Jersey who was a victim of an incident of domestic violence as defined in N.J.S.A. 2C:25-19, or a sexually violent offense as defined in N.J.S.A. 30:4-27.26, or whose parent-in-law, sibling, grandparent, grandchild, child, parent, spouse, domestic partner, or civil union partner individual, or any other individual related by blood to the employee, and any other individual that



the employee shows to have a close association with the employee which is the equivalent of a family relationship, was a victim shall be entitled to unpaid leave of no more than twenty days in one twelve-month period, to be used in the twelve-month period next following any incident of domestic violence or any sexually violent offense as provided in N.J.S.A. 34:11C-3.

For purposes of N.J.S.A. 34:11C-3 and Regulation 1581 - Section B.3., each incident of domestic violence or any sexually violent offense shall constitute a separate offense for which an employee is entitled to unpaid leave, provided that the employee has not exhausted the allotted twenty days for the twelve-month period.

The unpaid leave may be taken intermittently in intervals of no less than one day, as needed for the purpose of engaging in any of the following activities as they relate to the incident of domestic violence or sexually violent offense:

- (1) Seeking medical attention for, or recovering from, physical or psychological injuries caused by domestic or sexual violence to the employee or the employee's parent-in-law, sibling, grandparent, grandchild, child, parent, spouse, domestic partner, or civil union partner individual, or any other individual related by blood to the employee, and any other individual that the employee shows to have a close association with the employee which is the equivalent of a family relationship;
- (2) Obtaining services from a victim services organization for the employee or the employee's parent-in-law, sibling, grandparent, grandchild, child, parent, spouse, domestic partner, or civil union partner individual, or any other individual related by blood to the employee, and any other individual that the employee shows to have a close association with the employee which is the equivalent of a family relationship;
- (3) Obtaining psychological or other counseling for the employee or the employee's parent-in-law, sibling, grandparent, grandchild, child, parent, spouse, domestic partner, or civil union partner individual, or any other individual related by blood to the employee, and any other individual that the employee shows to have a close association with the employee which is the equivalent of a family relationship;



- (4) Participating in safety planning, temporarily or permanently relocating, or taking other actions to increase the safety of the employee or the employee's parent-in-law, sibling, grandparent, grandchild, child, parent, spouse, domestic partner, or civil union partner individual, or any other individual related by blood to the employee, and any other individual that the employee shows to have a close association with the employee which is the equivalent of a family relationship, from future domestic or sexual violence or to ensure economic security;
 - (5) Seeking legal assistance or remedies to ensure the health and safety of the employee or the employee's parent-in-law, sibling, grandparent, grandchild, child, parent, spouse, domestic partner, or civil union partner, individual, or any other individual related by blood to the employee, and any other individual that the employee shows to have a close association with the employee which is the equivalent of a family relationship, including preparing for, or participating in, any civil or criminal legal proceeding related to or derived from domestic or sexual violence; or
 - (6) Attending, participating in, or preparing for a criminal or civil court proceeding relating to an incident of domestic or sexual violence of which the employee or the employee's parent-in-law, sibling, grandparent, grandchild, child, parent, spouse, domestic partner, or civil union partner, or any other individual related by blood to the employee, and any other individual that the employee shows to have a close association with the employee which is the equivalent of a family relationship, was a victim.
- b. An eligible employee may elect to use any accrued paid vacation leave, personal leave, or medical or sick leave of the employee, or any family temporary disability leave benefits provided pursuant to N.J.S.A. 43:21-27 during any part of the twenty-day period of unpaid leave provided under N.J.S.A 34:11C-3 and Regulation 1581 - Section B.3.a.

In such case, any paid leave provided by the employer, and accrued pursuant to established policies of the employer, or family temporary disability leave benefits, shall run concurrently with the unpaid leave provided under N.J.S.A. 34:11C-3.a and Regulation 1581 - Section B.3.a.



and, accordingly, the employee shall receive pay pursuant to the employer's applicable paid leave policy, or family temporary disability leave benefits, during the period of otherwise unpaid leave. If an employee requests leave for a reason covered by both N.J.S.A. 34:11C-3.a and the "Family Leave Act," N.J.S.A. 34:11B-1 et seq. or the Federal "Family and Medical Leave Act of 1993," 29 U.S.C. § 2601 et seq., the leave shall count simultaneously against the employee's entitlement under each respective law.

Leave granted under N.J.S.A. 34:11C-3 and Regulation 1581 - Section B. shall not conflict with any rights pursuant to the "Family Leave Act," the "Temporary Disability Benefits Law," N.J.S.A. 43:21-25 et al, or the Federal "Family and Medical Leave Act of 1993."

- c. Prior to taking the leave provided for in N.J.S.A. 34:11C-3 and Regulation 1581 - Section B.3.a., an employee shall, if the necessity for the leave is foreseeable, provide the employer with written notice of the need for the leave, unless an emergency or other unforeseen circumstance precludes prior notice. The notice shall be provided to the employer as far in advance as is reasonable and practical under the circumstances.
- d. Nothing contained in the NJ SAFE Act (N.J.S.A. 34:11C-1 et seq.) and Regulation 1581 - Section B. shall be construed to prohibit an employer from requiring that a period of leave provided pursuant to N.J.S.A. 34:11C-3 and Regulation 1581 - Section B. be supported by the employee with documentation of the domestic violence or sexually violent offense which is the basis for the leave.

If the employer requires the documentation, the employee shall be regarded as having provided sufficient documentation if the employee provides one or more of the following:

- (1) A domestic violence restraining order or other documentation of equitable relief issued by a court of competent jurisdiction;
- (2) A letter or other written documentation from the county or municipal prosecutor documenting the domestic violence or sexually violent offense;



- (3) Documentation of the conviction of a person for the domestic violence or sexually violent offense;
- (4) Medical documentation of the domestic violence or sexually violent offense;
- (5) Certification from a certified Domestic Violence Specialist or the director of a designated domestic violence agency or Rape Crisis Center, that the employee or employee's parent-in-law, sibling, grandparent, grandchild, child, parent, spouse, domestic partner, or civil union partner, or any other individual related by blood to the employee, and any other individual that the employee shows to have a close association with the employee which is the equivalent of a family relationship, is a victim of domestic violence or a sexually violent offense; or
- (6) Other documentation or certification of the domestic violence or sexually violent offense provided by a social worker, member of the clergy, shelter worker, or other professional who has assisted the employee or employee's parent-in-law, sibling, grandparent, grandchild, child, parent, spouse, domestic partner, or civil union partner, or any other individual related by blood to the employee, and any other individual that the employee shows to have a close association with the employee which is the equivalent of a family relationship, in dealing with the domestic violence or sexually violent offenses.

For the purpose of N.J.S.A. 34:11C-3.c and Regulation 1581 - Section B.3.d.:

- (1) "Certified Domestic Violence Specialist" means a person who has fulfilled the requirements of certification as a Domestic Violence Specialist established by the New Jersey Association of Domestic Violence Professionals;
- (2) "Designated Domestic Violence Agency" means a county-wide organization with a primary purpose to provide services to victims of domestic violence, and which provides services that conform to the core domestic violence services profile as defined by the Division of Child Protection and Permanency in the Department of Children and Families and is under contract with the Division for the express purpose of providing the services.



- (3) "Rape Crisis Center" means an office, institution, or center offering assistance to victims of sexual offenses through crisis intervention, medical and legal information, and follow-up counseling.
- e. An employer shall display conspicuous notice of its employees' rights and obligations pursuant to the provisions of the NJ SAFE Act, in such form and manner as the Commissioner of Labor and Workforce Development shall prescribe, and use other appropriate means to keep its employees so informed.
- f. No provision of N.J.S.A. 34:11C-1 et seq. and Policy and Regulation 1581 – Section B. shall be construed as requiring or permitting an employer to reduce employment benefits provided by the employer or required by a collective bargaining agreement which are in excess of those required by the NJ SAFE Act. Nor shall any provision of N.J.S.A. 34:11C-1 et seq. and Policy and Regulation 1581 – Section B. be construed to prohibit the negotiation and provision through collective bargaining agreements of leave policies or benefit programs which provide benefits in excess of those required by the NJ SAFE Act. N.J.S.A. 34:11C-3.e and Regulation 1581 – Section B.3.f. shall apply irrespective of the date that a collective bargaining agreement takes effect.

Nothing contained in N.J.S.A. 34:11C-1 et seq. and Policy and Regulation 1581 – Section B. shall be construed as permitting an employer to:

- (1) Rescind or reduce any employment benefit accrued prior to the date on which the leave taken pursuant to the NJ SAFE Act commenced; or
- (2) Rescind or reduce any employment benefit, unless the rescission or reduction of the benefit is based on changes that would have occurred if an employee continued to work without taking the leave provided pursuant to Regulation 1581 – Section B.3.a.
- g. All information provided to an employer pursuant to N.J.S.A. 34:11C-3.c and Regulation 1581 – Section B.3.d. above and any information regarding a leave taken pursuant to N.J.S.A. 34:11C-3.c and any failure of an employee to return to work, shall be retained in the strictest confidentiality, unless the disclosure is voluntarily authorized in writing by the employee or is required by a Federal or State law, rule, or regulation.



4. Certain Actions by Employer Prohibited (N.J.S.A. 34:11C-4)

An employer shall not discharge, harass, or otherwise discriminate, retaliate, or threaten to discharge, harass, or otherwise discriminate or retaliate against an employee with respect to the compensation, terms, conditions, or privileges of employment on the basis that the employee took or requested any leave to which the employee was entitled pursuant to N.J.S.A. 34:11C-3 of the NJ SAFE Act and Regulation 1581 – Section B.3. or on the basis that the employee refused to authorize the release of information deemed confidential pursuant to N.J.S.A. 34:11C-3.f and Regulation 1581 – Section B.3.g.

5. Violations; Penalties (N.J.S.A. 34:11C-5)

a. Upon a violation of any of the provisions of N.J.S.A.34:11C-3 and Regulation 1581 - Section B.3., or N.J.S.A. 34:11C-4 and Regulation 1581 - Section B.4., an employee or former employee may institute a civil action in the Superior Court for relief. All remedies available in common law tort actions shall be available to a prevailing plaintiff. The Court may also order any or all of the following relief:

- (1) An assessment of a civil fine of not less than \$1,000 and not more than \$2,000 for the first violation of any of the provisions of N.J.S.A. 34:11C-3 or N.J.S.A. 34:11C-4 and not more than \$5,000 for each subsequent violation;
- (2) An injunction to restrain the continued violation of any of the provisions of N.J.S.A. 34:11C-3 or N.J.S.A. 34:11C-4;
- (3) Reinstatement of the employee to the same position or to a position equivalent to that which the employee held prior to unlawful discharge or retaliatory action;
- (4) Reinstatement of full fringe benefits and seniority rights;
- (5) Compensation for any lost wages, benefits, and other remuneration;
- (6) Payment of reasonable costs and attorney's fees.



REGULATION

NEPTUNE CITY BOARD OF EDUCATION

ADMINISTRATION
R 1581/page 17 of 17
Domestic Violence

- b. An action brought under N.J.S.A. 34:11C-5 shall be commenced within one year of the date of the alleged violation.
- c. A private cause of action provided for in N.J.S.A. 34:11C-5 shall be the sole remedy for a violation of N.J.S.A. 34:11C-1 et seq.

Adopted: 18 March 2021



1613 DISCLOSURE AND REVIEW OF APPLICANT'S EMPLOYMENT HISTORY

A school district, charter school, nonpublic school, or contracted service provider holding a contract with a school district, charter school, or nonpublic school (hiring entity) shall not employ for pay or contract for the paid services of any person serving in a position which involves regular contact with students unless the hiring entity complies with the requirements of N.J.S.A. 18A:6-7.6 et seq. and as outlined in Policy and Regulation 1613.

An applicant the hiring entity seeks to offer employment to and will fill a position which involves regular contact with students shall be required to provide their employment history pursuant to N.J.S.A. 18A:6-7.7.a.(1). The applicant shall also provide written authorization that consents to and authorizes the disclosure of information regarding the applicant's employment history and the release of related records by the applicant's current or former employer(s) regarding child abuse and/or sexual misconduct pursuant to N.J.S.A. 18A:6-7.7.a.(2). The applicant shall also provide a written statement as to whether the applicant has any employment history regarding child abuse or sexual misconduct pursuant to N.J.S.A. 18A:6-7.7.a.(3).

A hiring entity shall review an applicant's employment history as required in N.J.S.A. 18A:6-7.7.b. and if the hiring entity determines to continue the applicant's employment application process, the hiring entity shall contact those employers listed by the applicant and request confirmation of the information provided by the applicant pursuant to N.J.S.A. 18A:6-7.7.a.

Upon the hiring entity receiving and reviewing the information disclosed by the applicant's current and/or former employer(s), and finding an affirmative response to any of the inquiries required in N.J.S.A. 18A:7.7.b.(2), and if the hiring entity determines to continue with the applicant's job application process, the hiring entity shall make further inquiries of the applicant's current or former employer(s) to ascertain additional details regarding the information disclosed.

The failure of an employer to provide the information requested by the hiring entity pursuant to N.J.S.A. 18A:6-7.7.b. within a twenty-day timeframe may be grounds for the automatic disqualification of an applicant from employment with a hiring entity in accordance with N.J.S.A. 18A:6-7.9.c.

In accordance with the provisions of N.J.S.A. 18A:6-7.9.c., a hiring entity shall not be liable for any claims brought by an applicant who is not offered employment or whose employment is terminated because of any information received or due to the inability to conduct a full review of the applicant's employment history pursuant to N.J.S.A. 18A:6-7.7.



Disclosure and Review of Applicant's Employment History

In accordance with the provisions of N.J.S.A. 18A:6-7.9.d., a hiring entity shall have the right to immediately terminate an individual's employment or rescind an offer of employment if the applicant is offered employment or commences employment following June 1, 2018 and information regarding the applicant's history of sexual misconduct or child abuse is subsequently discovered or obtained by the employer that the employer determines disqualifies the applicant or employee from employment under N.J.S.A. 18A:6-7.6 et seq. The termination of employment pursuant to N.J.S.A. 18A:6-7.9 shall not be subject to any grievance or appeals procedures or tenure proceedings pursuant to any collectively bargained or negotiated agreement or any law, rule, or regulation.

A hiring entity may employ or contract with an applicant on a provisional basis for a period not to exceed ninety days pending review of information received pursuant to N.J.S.A. 18A:6-7.7.b. provided the conditions outlined in N.J.S.A. 18A:6-7.10.b. are satisfied.

All requests for information sent to this school district, charter school, or nonpublic school from a hiring entity regarding a current or former employee in accordance N.J.S.A. 18A:6-7.6 et seq. shall be directed to the Chief School Administrator or designee. The Chief School Administrator or designee shall review the request for information and confirm the applicant's employment relationship and ensure the written authorization is in compliance with N.J.S.A. 18A:6-7.7.a.(2) prior to the release of information requested and the release of related records in accordance with N.J.S.A. 18A:6-7.6 et seq.

On or after June 1, 2018, a hiring entity may not enter into a collectively bargained or negotiated agreement, an employment contract, an agreement for resignation or termination, a severance agreement, or any other contract or agreement or take any action that is prohibited as outlined in N.J.S.A. 18A:6-7.12. Any provision of an employment contract or agreement for resignation or termination or a severance agreement that is executed, amended, or entered into after June 1, 2018 and that is contrary to N.J.S.A. 18A:6-7.6 et seq. shall be void and unenforceable.

Pursuant to N.J.S.A. 18A:6-7.11, information received by a school district, charter school, or nonpublic school under Policy and Regulation 1613 and N.J.S.A. 18A:6-7.6 et seq. shall not be deemed a public record under N.J.S.A. 47:1A-1 et seq. or the common law concerning access to public records. A school district, charter school, or nonpublic school that provides information or records about a current or former employee or applicant shall be immune from criminal and civil liability for the disclosure of the information, unless the information or records provided were knowingly false.

N.J.S.A. 18A:6-7.6; 18A:6-7.7; 18A:6-7.8; 18A:6-7.9;
18A:6-7.10; 18A:6-7.11; 18A:6-7.12; 18A:6-7.13

New Jersey Department of Education Guidance and Resources to Assist with
Pre-Employment Requirements of P.L. 2018, c.5. - June 25, 2018

Adopted: 18 March 2021



R 1613 DISCLOSURE AND REVIEW OF APPLICANT'S EMPLOYMENT HISTORY

A school district, charter school, nonpublic school, or contracted service provider holding a contract with a school district, charter school, or nonpublic school shall not employ for pay or contract for the paid services of any person serving in a position which involves regular contact with students and is offered employment or commences employment following June 1, 2018 unless the school district, charter school, nonpublic school, or contracted service provider complies with the requirements of N.J.S.A. 18A:6-7.6 et seq. as outlined in Policy and Regulation 1613.

A. Definitions (N.J.S.A. 18A:6-7.6 et seq.)

For the purposes of this Policy and Regulation:

1. "Applicant" means any person considered for employment or offered employment for pay or contract for the paid services of any person serving in a position which involves regular contact with students.
2. "Child abuse" means any conduct that falls under the purview and reporting requirements of N.J.S.A. 9:6-8.8 et seq. and is directed toward or against a child or student, regardless of the age of the child or student.
3. "Disclosure Information Request Form" shall be the State of New Jersey Sexual Misconduct/Child Abuse Disclosure Information Request, P.L. 2018, Chapter 5 or a similar form developed by the hiring entity.
4. "Disclosure Release Form" shall be the State of New Jersey Sexual Misconduct/Child Abuse Disclosure Release, P.L. 2018, Chapter 5 or a similar form developed by the hiring entity.
5. "Hiring entity" means all school entities including school districts, charter schools, nonpublic schools, or contracted service providers holding a contract with a school district, charter school, or nonpublic school.
6. "Sexual misconduct" means any verbal, nonverbal, written, or electronic communication, or any other act directed toward or with a student that is designed to establish a sexual relationship with the student, including a sexual invitation, dating or soliciting a date, engaging in sexual dialogue, making sexually suggestive comments, self-disclosure or physical exposure of a sexual or erotic nature, and any other sexual, indecent, or erotic contact with a student.



REGULATION

NEPTUNE CITY BOARD OF EDUCATION

ADMINISTRATION

R 1613/page 2 of 9

Disclosure and Review of Applicant's Employment History

B. Hiring Entity Required Application and Review Process (N.J.S.A. 18A:6-7.7)

1. A hiring entity shall not employ for pay or contract for the paid services of any person serving in a position which involves regular contact with students unless the hiring entity complies with the provisions of N.J.S.A. 18A:6-7.6 et seq.
 - a. The hiring entity shall require an applicant to provide a Disclosure Release Form which must include the following information:
 - (1) A list, including name, address, telephone number, and other relevant contact information of the applicant's:
 - (a) Current employer;
 - (b) All former employers within the last twenty years that were schools; and
 - (c) All former employers within the last twenty years where the applicant was employed in a position that involved direct contact with children; and
 - (2) A written authorization that consents to and authorizes disclosure of the information requested under b. below pursuant to N.J.S.A. 18A:6-7.7.a.(2) and the release of related records by the applicant's employers listed under B.1.a.(1) above, and that releases those employers from liability that may arise from the disclosure or release of records;
 - (3) A written statement as to whether the applicant:
 - (a) Has been the subject of any child abuse or sexual misconduct investigation by any employer, State licensing agency, law enforcement agency, or the Department of Children and Families, unless the investigation resulted in a finding the allegations were false or the alleged incident of child abuse or sexual misconduct was not substantiated;



Disclosure and Review of Applicant's Employment History

- (b) Has ever been disciplined, discharged, nonrenewed, asked to resign from employment, resigned from or otherwise separated from any employment while allegations of child abuse or sexual misconduct were pending or under investigation, or due to an adjudication or finding of child abuse or sexual misconduct; or
 - (c) Has ever had a license, professional license, or certificate suspended, surrendered, or revoked while allegations of child abuse or sexual misconduct were pending or under investigation, or due to an adjudication or finding of child abuse or sexual misconduct.
- (4) The hiring entity must comply with the requirements of N.J.S.A. 18A:6-7.6 et seq. for every applicant who will be employed by the hiring entity.
 - (a) However, the provisions of N.J.S.A. 18A:6-7.6 et seq. may be required by the hiring entity for any applicant.
- b. The Chief School Administrator or designee of the hiring entity will review the applicant's Disclosure Release Form. Upon determining to continue the application process, the Chief School Administrator or designee shall provide the applicant's Disclosure Release Form to all employers listed by the applicant under the provisions of N.J.S.A. 18A:6-7.7.a.(1) and B.1.a.(1) above and provide all employers listed with the applicant's written authorization that consents to and authorizes disclosure in accordance with N.J.S.A. 18A:6-7.7.a.(2) and B.1.a.(2) and request the following information:
 - (1) The dates of employment of the applicant; and
 - (2) A statement as to whether the applicant:
 - (a) Was the subject of any child abuse or sexual misconduct investigation by any employer, State licensing agency, law enforcement agency, or the Department of Children and Families, unless the investigation resulted in a finding that the allegations were false or the alleged incident of child abuse or sexual misconduct was not substantiated;



Disclosure and Review of Applicant's Employment History

- (b) Was disciplined, discharged, nonrenewed, asked to resign from employment, resigned from or otherwise separated from any employment while allegations of child abuse or sexual misconduct were pending or under investigation, or due to an adjudication or finding of child abuse or sexual misconduct; or
 - (c) Has ever had a license, professional license, or certificate suspended, surrendered, or revoked while allegations of child abuse or sexual misconduct were pending or under investigation, or due to an adjudication or finding of child abuse or sexual misconduct.
 - c. The review of the applicant's employment history may be conducted through telephonic, electronic, or written communications in accordance with N.J.S.A. 18A:6-7.7.
 - (1) If the review is conducted by telephone, the results of the review shall be documented in writing by the Chief School Administrator or designee responsible for reviewing the applicant's employment history. The Chief School Administrator or designee may use the Disclosure Release Form to complete this review.
- 2. After reviewing the information disclosed by an employer under B.1.b. above and finding an affirmative response to any of the inquiries listed and if the Chief School Administrator or designee of the hiring entity determines to continue with the applicant's job application process, the Chief School Administrator or designee shall make further inquiries of the applicant's current and/or former employer(s) to ascertain additional details regarding the matter disclosed pursuant to N.J.S.A. 18A:6-7.10.
 - a. The Chief School Administrator or designee shall make these additional inquiries by requesting the current and/or former employer to complete the Disclosure Information Request Form and attach additional information, including the initial complaint and final report, if any, regarding the incident of child abuse or sexual misconduct.
 - b. The Chief School Administrator, upon receiving and reviewing the additional information disclosed in accordance with B.2.a. above, will make a determination to continue with the applicant's job application process.



Disclosure and Review of Applicant's Employment History

3. All employment history documentation for each applicant employed by the hiring entity in accordance with N.J.S.A. 18A:6-7.6 et seq. shall be maintained in the employee's personnel file. All employment history documentation for an applicant not hired shall be maintained by the Chief School Administrator or designee and destroyed in accordance with the New Jersey Department of Revenue – Records Management Services Records Retention and Disposition Schedule.
 4. Employment history review pursuant to N.J.S.A. 18A:6-7.6 et seq. is not required for applicants the hiring entity does not wish to employ.
 5. The hiring entity, in accordance with N.J.S.A. 18A:6-7.9.b., in conducting the review of the employment history of an out-of-State applicant, shall make, and document with specificity, diligent efforts to:
 - a. Verify the information provided by the applicant pursuant to N.J.S.A. 18A:6-7.7.a. and B.1.a. above; and
 - b. Obtain from any out-of-State employers listed by the applicant the information requested pursuant to N.J.S.A. 18A:6-7.7.b. and B.1.b. above.
- C. Completing a Disclosure Request from a Hiring Entity Regarding a Current or Former Employee (N.J.S.A. 18A:6-7.9)
1. All requests for information from a hiring entity regarding a current or former employee of this school district, charter school, or nonpublic school in accordance N.J.S.A. 18A:6-7.6 et seq. shall be directed to the Chief School Administrator or designee.
 - a. The Chief School Administrator or designee, upon receiving a request from a hiring entity for information, shall provide the information requested in accordance with N.J.S.A. 18A:6-7.6 et seq. to the hiring entity submitting the request if:
 - (1) The employment relationship is confirmed pursuant to N.J.S.A. 18A:6-7.7.a.(1) and B.1.a.(1) above; and
 - (2) The written authorization is in compliance with N.J.S.A. 18A:6-7.7.a.(2) and B.1.a.(2) above.
 - b. At the discretion of the Chief School Administrator, the requested information may be provided through telephonic, electronic, or written communications, pursuant to N.J.S.A. 18A:6-7.7 and B.1.c. above.



2. In the event a hiring entity requests additional information from this school district, charter school, or nonpublic school beyond a response to the questions as outlined in N.J.S.A. 18A:6-7.7.b. and B.1.b. above, the Chief School Administrator or designee will review the written request and will make a determination as to the additional information and/or documentation to be provided to the hiring entity. Any request for additional information and/or documentation must be submitted by the hiring entity in writing to the Chief School Administrator or designee before providing any additional information and/or documentation.
 - a. Upon providing such additional information and/or documentation, the Chief School Administrator or designee will take every measure to ensure privacy and confidentiality, consistent with State and Federal laws and regulations regarding student privacy and the privacy rights of others.
 - b. Any personally identifiable information regarding any student or other individual other than the applicant's personally identifiable information shall be redacted prior to the release of any additional information.
 - c. The requested additional information should be provided to the hiring entity within twenty days, as required by statute.
3. A copy of all requests for information and any information provided to a hiring entity, in accordance with the provisions of Policy and Regulation 1613 and N.J.S.A. 18A:6-7.6 et seq., shall be maintained by the Chief School Administrator or designee in the applicant's personnel file and shall only be destroyed in accordance with the New Jersey Department of Revenue – Records Management Services Records Retention and Disposition Schedule.

D. Timeline for Current or Former Employers to Disclose Information (N.J.S.A. 18A:6-7.9)

1. No later than twenty days after receiving a request for information under N.J.S.A. 18A:6-7.7.b. and B.1.b. above, an employer that has or had an employment relationship within the last twenty years with the applicant shall disclose the information requested pursuant to N.J.S.A. 18A:6-7.6 et seq.
2. The failure of an employer to provide the information requested pursuant to N.J.S.A. 18A:6-7.7.b. and B.1.b. above within the twenty day timeframe established under N.J.S.A. 18A:6-7.9.a. and D.1. above may be grounds for the automatic disqualification of an applicant from employment with a hiring entity. A hiring entity shall not be liable for any claims brought by an applicant who is not offered employment or whose employment is terminated:



REGULATION

NEPTUNE CITY BOARD OF EDUCATION

ADMINISTRATION

R 1613/page 7 of 9

Disclosure and Review of Applicant's Employment History

- a. Because of any information received by the hiring entity from an employer pursuant to N.J.S.A. 18A:6-7.7 and B. above; or
- b. Due to the inability of the hiring entity to conduct a full review of the applicant's employment history pursuant to N.J.S.A. 18A:6-7.7.b. and B.1.b. above.

E. Provisional Employment (N.J.S.A. 18A:6-7.10)

A hiring entity may employ or contract with an applicant on a provisional basis for a period not to exceed ninety days pending review by the hiring entity of information received pursuant to N.J.S.A. 18A:6-7.7 and B. above, provided that all of the following conditions are satisfied:

1. The applicant has complied with N.J.S.A. 18A:6-7.7.a. and B.1.a. above;
2. The hiring entity has no knowledge or information pertaining to the applicant that the applicant is required to disclose pursuant to N.J.S.A. 18A:6-7.7.a.(3) and B.1.a.(3); and
3. The hiring entity determines that special or emergent circumstances exist that justify the temporary employment of the applicant.

F. Penalties to Applicants (N.J.S.A. 18A:6-7.8)

1. An applicant who willfully provides false information or willfully fails to disclose information required in N.J.S.A. 18A:6-7.7.a. and B.1.a. above:
 - a. Shall be subject to discipline up to, and including, termination or denial of employment;
 - b. May be deemed in violation of subsection a. of N.J.S.A. 2C:28-3; and
 - c. May be subject to a civil penalty of not more than \$500 which shall be collected in proceedings in accordance with the "Penalty Enforcement Law of 1999," P.L. 1999, c.274 (N.J.S.A. 2A:58-10 et seq.).
2. A hiring entity shall include a notification of the penalties set forth in N.J.S.A. 18A:6-7.8 and F.1. above on all applications for employment for positions which involve regular contact with students.



REGULATION

NEPTUNE CITY BOARD OF EDUCATION

ADMINISTRATION

R 1613/page 8 of 9

Disclosure and Review of Applicant's Employment History

G. Termination (N.J.S.A. 18A:6-7.9.d.)

1. A hiring entity shall have the right to immediately terminate an individual's employment or rescind an offer of employment if:
 - a. The applicant is offered employment or commences employment with the hiring entity following June 1, 2018; and
 - b. Information regarding the applicant's history of sexual misconduct or child abuse is subsequently discovered or obtained by the hiring entity that the hiring entity determines disqualifies the applicant or employee from employment.
2. The termination of employment pursuant to the provisions outlined in G.1. above and pursuant to N.J.S.A. 18A:6-7.9 shall not be subject to any grievance or appeals procedures or tenure proceedings pursuant to any collectively bargained or negotiated agreement or any law, rule, or regulation.

H. Information Not Deemed Public Record and Immunity (N.J.S.A. 18A:6-7.11)

1. Information received by an employer in accordance with Policy and Regulation 1613 and N.J.S.A. 18A:6-7.6 et seq. shall not be deemed a public record under N.J.S.A. 47:1A-1 et seq. or the common law concerning access to public records.
2. An employer, school district, charter school, nonpublic school, school administrator, or contracted service provider that provides information or records about a current or former employee or applicant shall be immune from criminal and civil liability for the disclosure of the information, unless the information or records provided were knowingly false. The immunity shall be in addition to and not in limitation of any other immunity provided by law.

I. Prohibited Actions Relative to Certain Agreements and Employment Contracts (N.J.S.A. 18A:6-7.12)

1. On or after June 1, 2018, a school district, charter school, nonpublic school, or contracted service provider may not enter into a collectively bargained or negotiated agreement, an employment contract, an agreement for resignation or termination, a severance agreement, or any other contract or agreement or take any action that:



- a. Has the effect of suppressing or destroying information relating to an investigation related to a report of suspected child abuse or sexual misconduct by a current or former employee;
 - b. Affects the ability of a school district, charter school, nonpublic school, or contracted service provider to report suspected child abuse or sexual misconduct to the appropriate authorities; or
 - c. Requires the school district, charter school, nonpublic school, or contracted service provider to expunge information about allegations or finding of suspected child abuse or sexual misconduct from any documents maintained by the school district, charter school, nonpublic school, or contracted service provider, unless after investigation the allegations are found to be false or the alleged incident of child abuse or sexual misconduct has not been substantiated.
 2. Any provision of an employment contract or agreement for resignation or termination or a severance agreement that is executed, amended, or entered into after June 1, 2018 and that is contrary to N.J.S.A. 18A:6-7.12 shall be void and unenforceable.
- J. Public Awareness Campaign (N.J.S.A. 18A:7.13)
1. The New Jersey Department of Education (NJDOE) shall establish a public awareness campaign to publicize the provisions of N.J.S.A. 18A:6-7.6 et seq. and to ensure applicants and employers are aware of their respective rights and responsibilities under N.J.S.A. 18A:6-7.6 et seq. The NJDOE shall post on its website guidance documents and any other informational materials that may assist applicants and employers in the implementation of and compliance with N.J.S.A. 18A:6-7.6 et seq.
 2. The NJDOE developed forms for applicants and employers may be used to comply with the requirements of Policy and Regulation 1613 and N.J.S.A. 18A:6-7.7, as well as any other forms necessary to carry out the provisions of N.J.S.A. 18A:6-7.6 et seq.

Issued: 18 March 2021



1620 ADMINISTRATIVE EMPLOYMENT CONTRACTS

The Executive County Superintendent shall review and approve for all Superintendents of Schools, Superintendents of Schools reappointed pursuant to N.J.S.A. 18A:17-20.1, Deputy Superintendents of Schools, Assistant Superintendents of Schools, and School Business Administrators, including any interim, acting, or person otherwise serving in these positions, in school districts, county vocational school districts, county special services school districts and other districts, except charters, within the County under the supervision of the Executive County Superintendent:

1. New employment contracts, including contracts that replace expired contracts for existing tenured and non-tenured employees;
2. Renegotiations, extensions, amendments, or other alterations of the terms of existing employment contracts that have been previously approved by the Executive County Superintendent; and
3. Provisions for contract extensions where such terms were not included in the original employment contract or are different from the provisions contained in the original approved employment contract.

In counties where there is no Executive County Superintendent, an Executive County Superintendent from another county shall be designated by the Commissioner to review and approve all contracts listed above.

The contract review and approval shall take place prior to any required public notice and hearing pursuant to N.J.S.A. 18A:11-11 and prior to the Board of Education approval and execution of the contract to ensure compliance with all applicable laws, including but not limited to N.J.S.A. 18A:30-3.5, 18A:30-9, 18A:17-15.1 and 18A:11-12.

In accordance with the provisions of N.J.S.A. 18A:11-11 and N.J.A.C. 6A:23A-3.1(c)1, the public notice and public hearing required shall be applicable to a Board of Education that renegotiates, extends, amends, or otherwise alters the terms of an existing contract with a Superintendent of Schools, Deputy Superintendent of Schools, Assistant Superintendent of Schools, or School Business Administrator. In accordance with N.J.S.A. 18A:11-11, notice must be provided to the public at least thirty days prior to the scheduled action by the Board. The Board shall also hold a public hearing and shall not take any action on the matter until the hearing has been held. The Board shall provide the public with at least ten days' notice of the public hearing.



In accordance with N.J.A.C. 6A:23A-3.1(c)1, the public notice and public hearing required pursuant to N.J.S.A. 18A:11-11 shall not apply to new contracts, including contracts that replace expired contracts for existing employees in one of these positions, whether tenured or not tenured. Nothing shall preclude a Board from issuing a public notice and/or holding a public hearing on new contracts, including new contracts that replace expired contracts for existing tenured and non-tenured employees.

The public notice and public hearing required pursuant to N.J.S.A. 18A:11-11 is also required in the event an existing contract for a Superintendent of Schools, Deputy Superintendent of Schools, Assistant Superintendent of Schools, or School Business Administrator is rescinded or terminated by the Board of Education before it is due to expire and the parties agree to new employment terms.

In connection with the Executive County Superintendent's review of the contract, the Board shall provide the Executive County Superintendent with a detailed statement setting forth the total cost of the contract for each applicable year, including salary, longevity (if applicable), benefits, and all other emoluments.

The review and approval of the employment contracts of Superintendents of Schools, Deputy Superintendents of Schools, Assistant Superintendents of Schools, and School Business Administrators conducted by the Executive County Superintendent shall be consistent with the following additional standards outlined in N.J.S.A. 18A:7-8.1 and N.J.A.C. 6A:23A-3.1:

1. Contracts for each class of administrative position shall be comparable with the salary, benefits and other emoluments contained in the contracts of similarly credentialed and experienced administrators in other school districts in the region with similar enrollment, academic achievement levels and challenges, and grade span.
2. No contract shall include provisions that are inconsistent with the travel requirements pursuant to N.J.S.A. 18A:11-12 and N.J.A.C. 6A:23A-7 including, but not limited to, the provisions for mileage reimbursement and reimbursement for meals and lodging in New Jersey. Any contractual provision that is inconsistent with law is superseded by the law.
3. No contract shall include provisions for the reimbursement or payment of employee contributions that are either required by law or by a contract in effect in the school district with other teaching staff members, such as payment of the employee's State or Federal taxes, or of the employee's contributions to FICA, Medicare, State pensions and annuities (TPAF), life insurance, disability insurance (if offered), and health benefit costs.



4. No contract shall contain a payment as a condition of separation from service that is deemed by the Executive County Superintendent to be prohibited or excessive in nature. The payment cannot exceed the lesser of the calculation of three months pay for every year remaining on the contract with pro-rata for partial years, not to exceed twelve months, or the remaining salary amount due under the contract.
5. No contract shall include benefits that supplement or duplicate benefits that are otherwise available to the employee by operation of law, an existing group plan, or other means; e.g., an annuity or life insurance plan that supplements or duplicates a plan already made available to the employee. Notwithstanding the provisions of this section, a contract may contain an annuity where those benefits are already contained in the existing contract between the employee and the district.
6. Contractual provisions regarding accumulation of sick leave and supplemental compensation for accumulated sick leave shall be consistent with N.J.S.A. 18A:30-3.5. Supplemental payment for accumulated sick leave shall be payable only at the time of retirement and shall not be paid to the individual's estate or beneficiaries in the event of the individual's death prior to retirement. Pursuant to N.J.S.A. 18A:30-3.2, a new Board of Education contract may include credit of unused sick leave in accordance with the new Board of Education's policy on sick leave credit for all employees.
7. Contractual provisions regarding accumulation of unused vacation leave and supplemental compensation for accumulated unused vacation leave shall be consistent with N.J.S.A. 18A:30-9. Contractual provisions for payments of accumulated vacation leave prior to separation can be included but only for leave accumulated prior to June 8, 2007 and remaining unused at the time of payment. Supplemental payments for unused vacation leave accrued consistent with the provisions of N.J.S.A. 18A:30-9 after June 8, 2007 as well as unused vacation leave accumulated prior to June 8, 2007 that has not been paid, shall be payable at the time of separation and may be paid to the individual's estate or beneficiaries in the event of the individual's death prior to separation.
8. Contractual provisions that include a calculation of per diem for twelve month employees shall be based on a two hundred sixty day work year.



9. No provision for a merit bonus shall be made except where payment is contingent upon achievement of quantitative merit criterion and/or qualitative merit criterion:
 - a. A contract may include no more than three quantitative merit criteria and two qualitative merit criteria per contract year.
 - b. The Executive County Superintendent shall approve or disapprove the selection of quantitative merit and qualitative merit criteria and the data that forms the basis of measuring the achievement of quantitative merit and qualitative merit criteria.
 - c. A contract may provide for merit bonuses in an amount not exceeding 3.33 percent of annual salary for each quantitative merit criterion achieved and 2.5 percent of annual salary for each qualitative merit criterion achieved. Any such merit bonus shall be considered "extra compensation" for purpose of N.J.A.C. 17:3-4.1 and shall not be cumulative.
 - d. The Board of Education shall submit to the Executive County Superintendent a resolution certifying that a quantitative merit criterion or a qualitative merit criterion has been satisfied and shall await confirmation of the satisfaction of that criterion from the Executive County Superintendent prior to payment of any merit bonus.
10. No provision for a bonus shall be made except where payment is contingent upon achievement of measurable specific performance objectives expressly contained in a contract approved pursuant to N.J.A.C. 6A:23A-3.1, where compensation is deemed reasonable relative to the established performance objectives and achievement of the performance objectives has been documented to the satisfaction of the Board of Education.
11. No provision for payment at the time of separation or retirement shall be made for work not performed except as otherwise authorized in N.J.A.C. 6A:23A-3.1 and N.J.S.A. 18A:7-8.1.
12. No contract shall include a provision for a monthly allowance except for a reasonable car allowance. A reasonable car allowance shall not exceed the monthly cost of the average monthly miles traveled for business purposes multiplied by the allowable mileage reimbursement pursuant to applicable law and regulation and New Jersey Office of Management and Budget (NJOMB)



circulars. If such allowance is included, the employee shall not be reimbursed for business travel mileage nor assigned permanently a car for official district business. Any provision of a car for official district business must conform with N.J.A.C. 6A:23A-6.12 and be supported by detailed justification. No contract shall include a provision of a dedicated driver or chauffeur.

13. All Superintendent contracts shall include the required provision pursuant to N.J.S.A. 18A:17-15.1 which states that in the event the Superintendent's certificate is revoked, the contract is null and void.
14. No contract shall include a provision for additional compensation upon the acquisition of a graduate degree unless the graduate degree is conferred by a regionally accredited college or university as defined in applicable regulations. No contract shall include a provision for assistance, tuition reimbursement, or additional compensation for graduate school coursework, unless the coursework culminates in the acquisition of a graduate degree conferred by a regionally accredited college or university as defined in applicable regulations.

The review and approval of an employment contract for the Superintendent of Schools shall not include maximum salary amounts pursuant to N.J.S.A. 18A:7-8.j.

Any actions by the Executive County Superintendent undertaken pursuant to N.J.S.A. 18A:7-8.1, N.J.A.C. 6A:23A-3.1, and this Policy may be appealed to the Commissioner of Education pursuant to the procedures set forth at N.J.A.C. 6A:3, Controversies and Disputes.

N.J.S.A. 18A:7-8; 18A:7-8.1; 18A:11-11
N.J.A.C. 6A:23A-3.1; 6A:23A-7 et seq.

Adopted: 18 March 2021



1631 RESIDENCY REQUIREMENT FOR PERSON HOLDING SCHOOL DISTRICT OFFICE, EMPLOYMENT, OR POSITION

Every person holding an office, employment, or position in a school district shall have his or her principal residence in New Jersey in accordance with the provisions of N.J.S.A. 52:14-7.

For the purpose of this Policy, "school district" means any local or regional school district established pursuant to Chapter 8 or Chapter 13 of Title 18A of the New Jersey Statutes and any jointure commission, county vocational school, county special services district, educational services commission, educational research and demonstration center, environmental education center, and educational information and resource center.

For the purpose of this Policy, a person may have at most one principal residence and the State of a person's principal residence means the State where the person spends the majority of his or her nonworking time, which is most clearly the center of his or her domestic life, and which is designated as his or her legal address and legal residence for voting. Having a home in New Jersey is not significant enough by itself to meet the principal residence requirement of the law. The fact that a person is domiciled in New Jersey shall not by itself satisfy the requirement of principal residency.

A person, regardless of the office, employment, or position, who holds an office, employment, or position in the school district on September 1, 2011, but does not have his or her principal residence in New Jersey on September 1, 2011, shall not be subject to this residency requirement of N.J.S.A. 52:14-7 while the person continues to hold office, employment, or position without a break in public service of greater than seven days.

A person may request an exemption from the provisions of N.J.S.A. 52:14-7 on the basis of critical need or hardship. The request shall be made to a five-member committee established in accordance with the provisions of N.J.S.A. 52:14-7 to consider applications for such exemptions. The decision on whether to approve an application from any person shall be made by a majority vote of the members of the committee, and those voting in the affirmative shall so sign the approved application. If the committee fails to act on an application within thirty days after the receipt thereof, no exemption shall be granted and the residency requirement of N.J.S.A. 52:14-7 shall be operative.

Any person holding or attempting to hold an office, employment, or position in violation of N.J.S.A. 52:14-7 shall be considered as illegally holding or attempting to hold the office, employment, or position; however, the person shall have one year from the time of taking the office, employment, or position to satisfy the requirement of principal residency. If such person fails to satisfy the requirement of principal residency as defined in N.J.S.A. 52:14-7 after the



POLICY

NEPTUNE CITY BOARD OF EDUCATION

ADMINISTRATION

1631/page 2 of 2

Residency Requirement for Person Holding School District Office, Employment, or Position

365-day period, that person shall be deemed unqualified for holding the office, employment, or position. The Superior Court shall, in a civil action in lieu of prerogative writ, give judgment of ouster against such person, upon the complaint of any officer or citizen of the State, provided that any such complaint shall be brought within one year of the alleged 365-day period of failure to have his or her principal residence in this State.

Notice of the residency requirements as outlined in N.J.S.A. 52:14-7 and this Policy should be provided to all existing persons holding office, employment, or a position in the school district and to candidates seeking to hold office, employment, or a position in the school district.

N.J.S.A. 52:14-7

Adopted: 18 March 2021



1642 EARNED SICK LEAVE LAW

All persons holding any office, position, or employment in local school districts, regional school districts, or county vocational schools of the State who are steadily employed by the Board of Education or who are protected by tenure in their office, position, or employment under the provisions of N.J.S.A. 18A:30-2 or any other law, except persons in the classified service of the civil service under Title 11, Civil Service, of the Revised Statutes, shall be allowed sick leave with full pay for a minimum of ten school days in any school year in accordance with the provisions of N.J.S.A. 18A:30-2.

However, a Board of Education may determine some persons holding an office, position, or employment are not eligible for sick leave in accordance with N.J.S.A. 18A:30-2. These persons shall be covered under the provisions of the New Jersey Earned Sick Leave Law (Act), N.J.S.A. 34:11D-1 through 34:11D-11. Policy and Regulation 1642 outline the provisions of the Act for those persons the Board of Education determines are not eligible for sick leave in accordance with the provisions of N.J.S.A. 18A:30-2 or any rule or law of New Jersey other than the Act.

For the purposes of Policy and Regulation 1642, “employer” means a local school district, regional school district, county vocational school, or charter school of the State who does not provide sick leave with full pay to an employee pursuant to N.J.S.A. 18A:30-2 or any other law, rule, or regulation of New Jersey and is required to comply with the requirements of the Act.

For the purposes of Policy and Regulation 1642, “employee” means an individual engaged in service for compensation to a local school district, regional school district, county vocational school, or charter school of the State who is not provided sick leave with full pay pursuant to N.J.S.A. 18A:30-2 or any other law, rule, or regulation of New Jersey and is eligible to accrue earned sick leave in accordance with the requirements of the Act.

In accordance with the provisions of N.J.S.A. 34:11D-2, for every thirty hours worked, an employee eligible to accrue earned sick leave under the Act shall accrue one hour of earned sick leave commencing no later than October 29, 2018.

The employer will provide an employee with the full complement of earned sick leave for a benefit year as required under N.J.S.A. 34:11D-2 on the first day of each benefit year in accordance with the provisions of N.J.S.A. 34:11D-2.a.



The employer will permit the employee to accrue or use in any benefit year, or carry forward from one benefit year to the next, more than forty hours of earned sick leave.

Unless the employee has accrued earned sick leave prior to October 29, 2018, the earned sick leave shall begin to accrue on October 29, 2018 for any employee who is hired and commences employment before October 29, 2018 and the employee shall be eligible to use the earned sick leave beginning February 26, 2019 after the employee commences employment.

If the employee's employment commences after October 29, 2018, the earned sick leave shall begin to accrue upon the date that employment commences. The employee shall be eligible to use the earned sick leave thirty days after employment commences, but no longer than 120 calendar days after employment commences.

The employer shall be in compliance with N.J.S.A. 34:11D-2 if the employer offers paid time off to an employee, which is fully paid and shall include, but is not limited to personal days, vacation days, and sick days, and may be used for the purposes of N.J.S.A. 34:11D-3 in the manner provided by the Act, and is accrued at a rate equal to or greater than the rate described in N.J.S.A. 34:11D-2.

The employer shall pay the employee for earned sick leave at the same rate of pay with the same benefits as the employee normally earns, except that the pay rate shall not be less than the minimum wage required for the employee pursuant to N.J.S.A. 34:11-56a4.

The employer shall permit an employee to use the earned sick leave accrued pursuant to the Act for any of the reasons outlined in N.J.S.A. 34:11D-3.a.

No employer shall take retaliatory personnel action or discriminate against an employee who accrues sick leave under the Act because the employee requests or uses earned sick leave either in accordance with the Act or the employer's own earned sick leave policy for employees covered under the Act. Any complaints alleging a violation of the Act shall be filed in accordance with the provisions of N.J.S.A. 34:11D-4.

In accordance with N.J.S.A. 34:11D-5, failure of the employer to comply with the provisions of the Act shall be regarded as a failure to meet the wage payment requirements of the "New Jersey State Wage and Hour Law."

The employer shall retain records documenting hours worked and earned sick leave taken by employees covered under the Act in accordance with the provisions of N.J.S.A. 34:11D-6.



The employer shall provide notification, in a form issued by the Commissioner of Labor and Workforce Development, to employees of their rights under the Act; post the notification; and provide a copy of the notification to employees eligible to accrue earned sick leave under the Act in accordance with the provisions of N.J.S.A. 34:11D-7.

N.J.S.A. 34:11D-1 through 34:11D-11

Adopted: 18 March 2021



R 1642 EARNED SICK LEAVE LAW

A. Definitions Relative to Policy and Regulation 1642 and the New Jersey Earned Sick Leave Law (Act)

“Act” means the New Jersey Earned Sick Leave Law – N.J.S.A. 34:11D-1. through 34:11D-11.

“Benefit year” means the period of twelve consecutive months, July 1 through June 30, as established by an employer in which an employee shall accrue and use earned sick leave as provided pursuant to N.J.S.A. 34:11D-2, provided that once the starting date of the benefit year is established by the employer it shall not be changed unless the employer notifies the Commissioner of Labor and Workforce Development of the change in accordance with regulations promulgated pursuant to the Act. The Commissioner shall impose a benefit year on any employer the Commissioner determines is changing the benefit year at times or in ways that prevent the accrual or use of earned sick leave by an employee.

“Certified Domestic Violence Specialist” means a person who has fulfilled the requirements of certification as a Domestic Violence Specialist established by the New Jersey Association of Domestic Violence Professionals.

“Child” means a biological, adopted, or foster child, stepchild or legal ward of an employee, child of a domestic partner or civil union partner of the employee.

“Civil union” means a civil union as defined in N.J.S.A. 37:1-29.

“Commissioner” means the Commissioner of Labor and Workforce Development.

“Department” means the Department of Labor and Workforce Development.

“Designated domestic violence agency” means a county-wide organization with a primary purpose to provide services to victims of domestic violence, and which provides services that conform to the core domestic violence services profile as defined by the Division of Child Protection and Permanency in the Department of Children and Families and is under contract with the division for the express purpose of providing the services.



REGULATION

NEPTUNE CITY BOARD OF EDUCATION

ADMINISTRATION
R 1642/page 2 of 10
Earned Sick Leave Law

“Domestic or sexual violence” means stalking, any sexually violent offense, as defined in N.J.S.A. 30:4-27.26, or domestic violence as defined in N.J.S.A. 2C:25-19, and N.J.S.A. 17:29B-16.

“Domestic partner” means a domestic partner as defined in N.J.S.A. 26:8A-3.

“Employee” means, for the purposes of Policy and Regulation 1642, an individual engaged in service for compensation to a local school district, regional school district, county vocational school, or charter school of the State who is not provided with sick leave with full pay pursuant to N.J.S.A. 18A:30-2 or any other law, rule, or regulation of New Jersey and is eligible to accrue earned sick leave in accordance with the requirements of the Act.

“Employer” means, for the purposes of Policy and Regulation 1642, a local school district, regional school district, county vocational school, or charter school of the State who does not provide sick leave with full pay to an employee pursuant to N.J.S.A. 18A:30-2 or any other law, rule, or regulation of New Jersey and is required to comply with the requirements of the Act.

“Family member” means a child, grandchild, sibling, spouse, domestic partner, civil union partner, parent, or grandparent of an employee, or a spouse, domestic partner, or civil union partner of a parent or grandparent of an employee, or a sibling of a spouse, domestic partner, or civil union partner of the employee, or any other individual related by blood to the employee or whose close association with the employee is the equivalent of a family relationship.

“Health care professional” means any person licensed under Federal, State, or local law, or the laws of a foreign nation, to provide health care services, or any other person who has been authorized to provide health care by a licensed health care professional, including but not limited to doctors, nurses, and emergency room personnel.

“Parent” means a biological, adoptive, or foster parent, stepparent, or legal guardian of an employee or of the employee’s spouse, domestic partner, or civil union partner, or a person who stood in loco parentis of the employee or the employee’s spouse, domestic partner, or civil union partner when the employee, spouse or partner was a minor child.

“Retaliatory personnel action” means denial of any right guaranteed under the Act and any threat, discharge, including a constructive discharge, suspension, demotion, unfavorable reassignment, refusal to promote, disciplinary action, sanction, reduction of work hours, reporting or threatening to report the actual or suspected immigrant status of an employee or the employee’s family, or any other adverse action against an employee.



“Sibling” means a biological, foster, or adopted sibling of an employee.

“Spouse” means a husband or wife.

B. Provision of Earned Sick Leave – N.J.S.A. 34:11D-2

1. The employer shall provide earned sick leave in accordance with the Act for each employee working for the employer.
2. For every thirty hours worked, the employee shall accrue one hour of earned sick leave. The employer will provide an employee their full complement of earned sick leave for a benefit year as required under N.J.S.A. 34:11D-2 on the first day of each benefit year in accordance with the Act.
3. The employer will permit the employee to accrue or use in any benefit year, or carry forward from one benefit year to the next, more than forty hours of earned sick leave.
 - a. Unless the employee has accrued earned sick leave prior to October 29, 2018, the earned sick leave shall begin to accrue on October 29, 2018 for any employee who is hired and commences employment before October 29, 2018 and the employee shall be eligible to use the earned sick leave beginning on February 26, 2019 after the employee commences employment.
 - b. If the employee’s employment commences after October 29, 2018, the earned sick leave shall begin to accrue upon the date that employment commences. The employee shall be eligible to use the earned sick leave thirty days after employment commences, but no longer than 120 calendar days after employment commences.
4. The employer shall be in compliance with N.J.S.A. 34:11D-2 if the employer offers paid time off to an employee, which is fully paid and shall include, but is not limited to personal days, vacation days, and sick days, and may be used for the purposes of N.J.S.A. 34:11D-3 in the manner provided by the Act, and is accrued at a rate equal to or greater than the rate described in N.J.S.A. 34:11D-2.



REGULATION

NEPTUNE CITY BOARD OF EDUCATION

ADMINISTRATION
R 1642/page 4 of 10
Earned Sick Leave Law

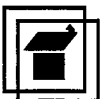
5. The employer shall pay the employee for earned sick leave at the same rate of pay with the same benefits as the employee normally earns, except that the pay rate shall not be less than the minimum wage required for the employee pursuant to N.J.S.A. 34:11-56a4.
6. Upon the mutual consent of the employee and employer, an employee may voluntarily choose to work additional hours or shifts during the same or following pay period, in lieu of hours or shifts missed, but shall not be required to work additional hours or shifts or use accrued earned sick leave. The employer may not require, as a condition of an employee using earned sick leave, that the employee search for or find a replacement worker to cover the hours during which the employee is using earned sick leave.
7. If an employee is transferred to a separate division, entity, or location, but remains employed by the same employer, then the employee shall be entitled to all earned sick leave accrued at the prior division, entity, or location, and shall be entitled to use the accrued earned sick leave as provided in the Act.
8. If an employee is terminated, laid off, furloughed, or otherwise separated from employment with the employer, any unused accrued earned sick leave shall be reinstated upon the re-hiring or reinstatement of the employee to that employment, within six months of termination, being laid off or furloughed, or separation, and prior employment with the employer shall be counted towards meeting the eligibility requirements set forth in N.J.S.A. 34:11D-2.
9. The employer may choose the increments in which its employees may use earned sick leave, provided that the largest increment of earned sick leave an employee may be required to use for each shift for which earned sick leave is used shall be the number of hours the employee was scheduled to work during that shift.

C. Permitted Usage of Earned Sick Leave – N.J.S.A. 34:11D-3

1. The employer shall permit an employee to use the earned sick leave accrued pursuant to the Act for any of the following:
 - a. Time needed for diagnosis, care, or treatment of, or recovery from, an employee's mental or physical illness, injury or other adverse health condition, or for preventive medical care for the employee;



- b. Time needed for the employee to aid or care for a family member of an employee during diagnosis, care, or treatment of, or recovery from, the family member's mental or physical illness, injury or other adverse health condition, or during preventive medical care for the family member;
 - c. Absence necessary due to circumstances resulting from the employee, or a family member of an employee, being a victim of domestic or sexual violence, if the leave is to allow the employee to obtain for the employee or the family member: medical attention needed to recover from physical or psychological injury or disability caused by domestic or sexual violence; services from a designated domestic violence agency or other victim services organization; psychological or other counseling; relocation; or legal services, including obtaining a restraining order or preparing for, or participating in, any civil or criminal legal proceeding related to the domestic or sexual violence;
 - d. Time during which the employee is not able to work because of a closure of the employee's workplace, or the school or place of care of a child of an employee, by order of a public official due to an epidemic or other public health emergency, or because of the issuance by a public health authority of a determination that the presence in the community of the employee, or a member of the employee's family in need of care by the employee, would jeopardize the health of others; or
 - e. Time needed by the employee in connection with a child of the employee to attend a school-related conference, meeting, function or other event requested or required by a school administrator, teacher, or other professional staff member responsible for the child's education, or to attend a meeting regarding care provided to the child in connection with the child's health conditions or disability.
2. If an employee's need to use earned sick leave is foreseeable, the employer will require advance notice, not to exceed seven calendar days prior to the date the leave is to begin, of the intention to use the leave and its expected duration, and shall make a reasonable effort to schedule the use of earned sick leave in a manner that does not unduly disrupt the operations of the employer. If the reason for the leave is not foreseeable, the employer will require an employee to give notice of the intention as soon as practicable, if the employer has notified the employee of this requirement.



- a. The employer may prohibit employees from using foreseeable earned sick leave on certain dates provided reasonable notice of these dates is provided to employees and the employer will require reasonable documentation if sick leave that is not foreseeable is used during those dates.
- b. For earned sick leave of three or more consecutive days, the employer will require reasonable documentation that the leave is being taken for the purpose permitted under N.J.S.A. 34:11D-3.a. and C.1. above.
- c. If the leave is permitted under N.J.S.A. 34:11D-3.a.(1) and C.1.a. above or N.J.S.A. 34:11D-3.a.(2) and C.1.b. above, documentation signed by a health care professional who is treating the employee or the family member of the employee indicating the need for the leave and, if possible, number of days of leave, shall be considered reasonable documentation.
- d. If the leave is permitted under N.J.S.A. 34:11D-3.a.(3) and C.1.c. above because of domestic or sexual violence, any of the following shall be considered reasonable documentation of the domestic or sexual violence: medical documentation; a law enforcement agency record or report; a court order; documentation that the perpetrator of the domestic or sexual violence has been convicted of a domestic or sexual violence offense; certification from a certified Domestic Violence Specialist or a representative of a designated domestic violence agency or other victim services organization; or other documentation or certification provided by a social worker, counselor, member of the clergy, shelter worker, health care professional, attorney, or other professional who has assisted the employee or family member in dealing with the domestic or sexual violence.
- e. If the leave is permitted under N.J.S.A. 34:11D-3.a.(4) and C.1.d. above, a copy of the order of the public official or the determination by the health authority shall be considered reasonable documentation.
- f. If the leave is permitted under N.J.S.A. 34:11D-3.a.(5) and C.1.e. above, tangible proof of the reasons outlined in N.J.S.A. 34:11D-3.a.(5) and C.1.e. above shall be considered reasonable documentation.



REGULATION

NEPTUNE CITY BOARD OF EDUCATION

ADMINISTRATION
R 1642/page 7 of 10
Earned Sick Leave Law

3. Nothing in the Act shall be deemed to require the employer to provide earned sick leave for an employee's leave for purposes other than those identified in N.J.S.A. 34:11D-3, or prohibit the employer from taking disciplinary action against an employee who uses earned sick leave for purposes other than those identified in N.J.S.A. 34:11D-3.
 4. The employer will not pay an employee for unused earned sick leave at the end of the benefit year pursuant to N.J.S.A. 34:11D-3.c.
 5. If the employer provides an employee with the full complement of earned sick leave for a benefit year on the first day of each benefit year as indicated in B.2. above, then the employer shall permit the employee to carry forward any unused sick leave to the next benefit year.
 6. Unless the employer's policy or a collective bargaining agreement provides for the payment of accrued earned sick leave upon termination, resignation, retirement, or other separation from employment, an employee shall not be entitled under N.J.S.A. 34:11D-3 to payment of unused earned sick leave upon the separation from employment.
 7. Any information the employer possesses regarding the health of an employee or any family member of the employee or domestic or sexual violence affecting an employee or employee's family member shall be treated as confidential and not disclosed except to the affected employee or with the written permission of the affected employee.
- D. Retaliation, Discrimination Prohibited – N.J.S.A. 34:11D-4
1. No employer shall take retaliatory personnel action or discriminate against an employee who accrues sick leave under the Act because the employee requests or uses earned sick leave either in accordance with the Act or the employer's own earned sick leave policy for employees covered under the Act. Any complaints alleging a violation of the Act shall be filed in accordance with the provisions of N.J.S.A. 34:11D-4.
 - a. The employer shall not count earned sick leave taken under the Act as an absence that may result in the employee being subject to discipline, discharge, demotion, suspension, a loss or reduction of pay, or any other adverse action.



2. There shall be a rebuttable presumption of an unlawful retaliatory personnel action under N.J.S.A. 34:11D-4 whenever the employer takes adverse action against an employee within ninety days of when that employee:
 - a. Files a complaint with the Department or a court alleging a violation of any provision of N.J.S.A. 34:11D-4;
 - b. Informs any person about the employer's alleged violation of N.J.S.A. 34:11D-4;
 - c. Cooperates with the Department or other persons in the investigation or prosecution of any alleged violation of N.J.S.A. 34:11D-4;
 - d. Opposes any policy, practice, or act that is unlawful under N.J.S.A. 34:11D-4; or
 - e. Informs any person of his or her rights under N.J.S.A. 34:11D-4.
 3. Protections of N.J.S.A. 34:11D-4 shall apply to any person who mistakenly but in good faith alleges violations of the Act.
 4. Any violator of the provisions of N.J.S.A. 34:11D-4 shall be subject to relevant penalties and remedies provided by the "New Jersey State Wage and Hour Law," N.J.S.A. 34:11-56a et seq., including the penalties and remedies provided by N.J.S.A. 34:11-56a24, and relevant penalties and remedies provided by N.J.S.A. 2C:40A-2, for discharge or other discrimination.
- E. Violations; Remedies, Penalties, Other Measures – N.J.S.A. 34:11D-5
1. Any failure of the employer to make available or pay earned sick leave as required by the Act, or any other violation of the Act, shall be regarded as a failure to meet the wage payment requirements of the "New Jersey State Wage and Hour Law," N.J.S.A. 34:11-56a et seq., or other violation of the New Jersey State Wage and Hour Law, as the case may be, and remedies, penalties, and other measures provided by the New Jersey State Wage and Hour Law, N.J.S.A. 34:11-58, and N.J.S.A. 2C:40A-2 for failure to pay wages or other violations of the New Jersey State Wage and Hour Law shall be applicable, including, but not limited to, penalties provided pursuant to N.J.S.A. 34:11-56a22 and 34:11-56a24, and civil actions by employees pursuant to N.J.S.A. 34:11-56a25, except that an award to an employee in a civil act shall include, in addition to the amount provided pursuant to N.J.S.A. 34:11-56a25, any actual damages suffered by the employee as the result of the violation plus an equal amount of liquidated damages.



F. Retention of Records, Access – N.J.S.A. 34:11D-6

1. The employer shall retain records documenting hours worked by employees and earned sick leave accrued/advanced, used, paid, and paid out and carried over by/to employees, for a period of five years, and shall, upon demand, allow the Department access to those records to monitor compliance with the requirements of the Act.
 - a. If an employee makes a claim the employer has failed to provide earned sick leave required by the Act and the employer has not maintained or retained adequate records documenting hours worked by the employee and earned sick leave taken by the employee or does not allow the Department access to the records, it shall be presumed the employer has failed to provide the earned sick leave, absent clear and convincing evidence otherwise.
2. In addition, the penalties provided by the “New Jersey State Wage and Hour Law,” N.J.S.A. 34:11-56a et seq. for violations of the requirements of the New Jersey State Wage and Hour Law regarding the maintaining and disclosure of records shall apply to violations of the requirements of N.J.S.A. 34:11D-6.

G. Notification to Employees – N.J.S.A. 34:11D-7

1. The employer shall provide notification, in a form issued by the Commissioner, to employees of their rights under the Act, including the amount of earned sick leave to which they are entitled and the terms of its use and remedies provided by the Act to employees if the employer fails to provide the required benefits or retaliates against employees exercising their rights under the Act.
 - a. The employer shall conspicuously post the notification in a place or places accessible to all employees in each of the employer’s workplaces.
 - b. The employer shall also provide each employee with a written copy of the notification: not later than thirty days after the form of the notification is issued; at the time of the employee’s hiring, if the employee is hired after the issuance; and at any time, when first requested by the employee.
 - c. The Commissioner shall make the notifications available in English, Spanish, and any other language that the Commissioner determines is the first language of a significant number of workers in the State and the employer shall use the notification in English, Spanish, or any other language for which the Commissioner has provided notifications and which is the first language of a majority of the employer’s workforce.



REGULATION

NEPTUNE CITY BOARD OF EDUCATION

ADMINISTRATION
R 1642/page 10 of 10
Earned Sick Leave Law

H. Provisions Preemptive; Construction of Act – N.J.S.A. 34:11D-8

1. No provision of the Act, or any regulations promulgated to implement or enforce the Act, shall be construed as:
 - a. Requiring the employer to reduce, or justifying the employer in reducing, rights or benefits provided by the employer pursuant to the employer's policy or a collective bargaining agreement which are more favorable to employees than those required by the Act or which provide rights or benefits to employees not covered by the Act;
 - b. Preventing or prohibiting the employer from agreeing, through a collective bargaining agreement or employer policy, to provide rights or benefits which are more favorable to employees than those required by the Act or to provide rights or benefits to employees not covered by the Act;
 - c. Prohibiting the employer from establishing a policy whereby an employee may donate unused accrued earned sick leave to another employee or other employees; or
 - d. Superseding any law providing collective bargaining rights for employees, or in any way reducing, diminishing, or adversely affecting those collective bargaining rights, or in any way reducing, diminishing, or affecting the obligations of the employer under those laws.
2. Employees or employee representatives may waive the rights or benefits provided under the Act during the negotiation of a collective bargaining agreement.
3. With respect to employees covered by a collective bargaining agreement in effect on October 29, 2018, no provision of the Act shall apply until the stated expiration of the collective bargaining agreement.

I. Severability – N.J.S.A. 34:11D-9

1. The provisions of the Act shall be deemed to be severable and if any section, subsection, paragraph, sentence or other part of the Act is declared to be unconstitutional, or the applicability thereof to any person is held invalid, the remainder of the Act shall not thereby be deemed to be unconstitutional or invalid.

Adopted: 18 March 2021



1648 RESTART AND RECOVERY PLAN

On June 26, 2020, the New Jersey Department of Education (NJDOE) published “The Road Back – Restart and Recovery Plan for Education” (Guidance), a guidance document for reopening New Jersey schools during the COVID-19 pandemic. The Guidance provided school officials with the information necessary to ensure that schools reopen safely and are prepared to accommodate staff and students’ unique needs during these unprecedented times. The NJDOE required school districts in the State to develop, in collaboration with community stakeholders, a “Restart and Recovery Plan” (Plan) to reopen schools that best fits the district’s local needs.

The Guidance requires the Board of Education to adopt certain policies and the Board adopts Policy 1648 to address those policy requirements in the Guidance. Policy 1648 shall only be effective through the current COVID-19 pandemic and will take precedence over any existing Policy on the same or similar subject, unless determined otherwise by the Chief School Administrator.

A. NJDOE Guidance – Key Subject Area 1 – Conditions for Learning

1. Transportation

- a. If the school district is providing transportation services on a school bus, a face covering must be worn by all students upon entering the school bus unless doing so would inhibit the student’s health. It is necessary to acknowledge that enforcing the use of face coverings may be impractical for young children or individuals with disabilities. Exceptions to the face covering requirements shall be those outlined in A.2.d. below:
 - (1) Accommodations for students who are unable to wear a face covering should be addressed according to that student's particular need and in accordance with all applicable laws and regulations.
- b. The school district shall use best practices for cleaning and disinfecting district-owned school buses and other transportation vehicles in accordance with A.3. below.
- c. District-employed school bus drivers and aides on district-owned school buses shall practice all safety actions and protocols as indicated for other school staff.



- d. If the school district is using contracted transportation services, the contractor shall ensure all Board of Education safety actions and protocols are followed by the contractor and its employees and/or its agents.

[See Policy Guide 1648 – Appendix C for the protocols/procedures for “Transportation” which is also included in the school district’s Restart and Recovery Plan.]

2. Screening, Personal Protective Equipment (PPE), and Response to Students and Staff Presenting Symptoms

- a. The school district shall screen students and employees upon arrival to a school building or work location for COVID-19 symptoms and a history of exposure.
 - (1) School staff must visually check students and employees for symptoms upon arrival (which may include temperature checks) and/or confirm with families that students are free of COVID-19 symptoms.
 - (2) Health checks must be conducted safely and respectfully, and in accordance with any applicable privacy laws and regulations.
 - (3) Results must be documented when signs/symptoms of COVID-19 are observed.
 - (4) The screening protocol will take into account students and employees with disabilities and accommodations that may be needed in the screening process for those students and employees.
 - (5) Students and employees with symptoms related to COVID-19 must be safely and respectfully isolated from others.
 - (6) If the school district becomes aware that an individual who has spent time in a school district facility tests positive for COVID-19, district officials must immediately notify local health officials, staff, and families of a confirmed case while maintaining confidentiality.



- b. School staff and visitors are required to wear face coverings unless doing so would inhibit the individual's health or the individual is under two years of age.
 - (1) If a visitor refuses to wear a face covering for non-medical reasons and if such covering cannot be provided to the individual at the point of entry, the visitor's entry to the school/district facility may be denied.
- c. Students are required to wear face coverings, unless doing so would inhibit the student's health. It is necessary to acknowledge that enforcing the use of face coverings may be impractical for young children or individuals with disabilities.
 - (1) Accommodations for students who are unable to wear a face covering should be addressed according to that student's need and in accordance with all applicable laws and regulations.
- d. Exceptions to the Requirement for Face Coverings
 - (1) Doing so would inhibit the individual's health.
 - (2) The individual is in extreme heat outdoors.
 - (3) The individual is in water.
 - (4) A student's documented medical condition, or disability as reflected in an Individualized Education Program (IEP), precludes the use of a face covering.
 - (5) The student is under the age of two, due to the risk of suffocation.
 - (6) During the period a student is eating or drinking.
 - (7) Face coverings should not be placed on anyone who has trouble breathing or is unconscious, or anyone who is incapacitated or otherwise unable to remove the face covering without assistance (e.g. face coverings should not be worn by Pre-K students during nap time).



- (8) The student is engaged in high intensity aerobic or anaerobic activities.
- (9) Face coverings may be removed during gym and music classes when individuals are in a well-ventilated location and able to maintain a physical distance of six feet apart.
- (10) When wearing a face covering creates an unsafe condition in which to operate equipment or execute a task.

[See Policy Guide 1648 – Appendix E for the protocols/procedures for “Screening, PPE, and Response to Students and Staff Presenting Symptoms” which is also included in the school district’s Restart and Recovery Plan.]

3. Facilities Cleaning Practices

- a. The school district must continue to adhere to existing required facilities cleaning practices and procedures and any new specific requirements of the local health department as they arise.
- b. A procedure manual must be developed to establish cleaning and disinfecting schedules for schools and school equipment, targeted areas to be cleaned, and methods and materials to be used.

[See Policy Guide 1648 – Appendix G for the protocols/procedures for – “Facilities Cleaning Practices” which is also included in the school district’s Restart and Recovery Plan.]

4. Wraparound Supports

- a. Mental Health Supports

The school district’s approach to student mental health supports will be affected by the learning environment in place at the beginning of the school year. If in-person instruction is not feasible, the district must find other ways to assess and monitor students’ mental health.

[See Policy Guide 1648 – Appendix K for the protocols/procedures for “Academic, Social, and Behavioral Supports” which is also included in the school district’s Restart and Recovery Plan.]



5. Contact Tracing

- a. Upon notification that a resident has tested positive for COVID-19, the local health department will call the school district to determine close contacts to whom they may have spread the virus, where close contact is defined as being within six feet for a period of at least ten minutes.
- b. The school district shall assist the local health department in conducting contact tracing activities, including ongoing communication with the identified individual and/or their contacts.
- c. The school district shall ensure adequate information and training is provided to the staff as necessary to enable staff to carry out responsibilities assigned to them.
- d. A staff liaison(s) shall be designated by the Chief School Administrator or designee and shall be responsible for providing notifications and carrying out other components that could help ensure notifications are carried out in a prompt and responsible manner.
- e. School districts shall allow staff, students, and families to self-report symptoms and/or suspected exposure.

[See Policy Guide 1648 – Appendix F for the protocols/procedures for “Contact Tracing” which is also included in the school district’s Restart and Recovery Plan.]

B. NJDOE Guidance – Key Subject Area 2 – Leadership and Planning

1. Scheduling

- a. The school district’s Plan must account for resuming in-person instruction and shall provide steps to shift back to virtual learning models if circumstances change and in-person instruction guidelines can no longer be followed.
- b. The school district’s Plan accommodates opportunities for both synchronous and asynchronous instruction, while ensuring requirements for a 180-day school year are met.



- c. The school district recognizes special populations will require unique considerations to ensure the continuity of learning as well as the health and safety of students and staff within the least restrictive environment.

- (1) Special Education and English Language Learners (ELL)

- (a) The school district shall provide educators with professional development to best utilize the accessibility features and accommodations tools made available through technology-based formats in accordance with this Policy.
 - (b) The school district shall continue to ensure students receive individualized supports that meet the requirements of the IEP and 504 Plans.

[See Policy Guide 1648 – Appendix N for the protocols/procedures for “Scheduling of Students” which is also included in the school district’s Restart and Recovery Plan.]

- 2. Staffing

- a. The school district shall comply with all applicable employment laws when making staffing and scheduling requirements, including, but not limited to, the Americans Disabilities Act (ADA), the Health Insurance Portability and Accountability Act (HIPPA), and all applicable State laws.
 - b. As the school district adjusts schedules, teaching staff members must maintain quality instruction for students pursuant to the minimum requirements set forth in NJDOE regulation.

[See Policy Guide 1648 – Appendix O for the protocols/procedures for “Staffing” which is also included in the school district’s Restart and Recovery Plan.]

- C. NJDOE Guidance – Key Subject Area 3 – Policy and Funding

- 1. School Funding

- a. Purchasing



The school district may likely need to purchase items not needed in the past and may experience increased demand for previously purchased goods and services to implement the Plan. The school district shall continue to comply with the provisions of the “Public School Contracts Law”, N.J.S.A. 18A:18A-1 et seq.

b. Use of Reserve Accounts, Transfers, and Cashflow

The school district shall apply for the approval from the Commissioner of Education, prior to performing certain budget actions, such as withdrawing from the emergency reserve account or making transfers that cumulatively exceed ten percent of the amount originally budgeted.

c. Costs and Contracting

The school district shall follow all New Jersey State laws and regulations applicable to local school districts for purchasing when procuring devices and connectivity or any technology related item.

D. NJDOE Guidance – Key Subject Area 4 – Continuity of Learning

1. Ensuring the Delivery of Special Education and Related Services to Students with Disabilities

- a. The school district shall continue to meet their obligations to students with disabilities to the greatest extent possible.

2. Professional Learning

- a. The school district shall prepare and support teaching staff members in meeting the social, emotional, health, and academic needs of all students throughout the implementation of the Plan.

(1) Professional Learning

- (a) The school district shall grow each teaching staff member’s professional capacity to deliver developmentally appropriate standards-based instruction remotely.

(2) Mentoring and Induction



- (a) The school district shall ensure:
 - (i) All novice provisional teachers new to the district be provided induction;
 - (ii) One-to-one mentoring is provided to novice provisional teachers by qualified mentors;
 - (iii) Mentors can provide sufficient support and guidance to novice provisional teachers working in a remote environment;
 - (iv) Mentoring is provided in both hybrid and fully remote learning environments and that mentors and provisional teachers will agree upon scheduling, structure, and communication strategies they will use to maintain the mentoring experience; and
 - (v) The use of online collaborative tools for school staff to remain connected to other mentors, new teachers, and administrators to maintain a sense of communal support.

(3) Evaluation

- (a) The school district has considered the requirements and best practices with provisional status teachers, nontenured educators, and those on Corrective Action Plans (including extra observations, extra observers, assuring more frequent feedback and face-to-face).

3. Career and Technical Education (CTE)

- a. The school district shall implement innovative learning models for new learning environments regarding CTE.
- b. Quality CTE Programs

The school district shall ensure students have access to appropriate industry-recognized, high-value credentials.



c. Work-Based Learning

The school district will ensure students are provided the opportunity to participate in safe work-based learning, either remotely (simulations, virtual tours, etc.) or in-person.

New Jersey Department of Education “The Road Back – Restart and Recovery Plan for Education”

Memorandum – New Jersey Governor and Department of Education – Conditions for Learning – Health and Safety – August 3, 2020

Adopted: 18 March 2021



Appendices

The provisions of the attached Appendices C, E, F, G, K, N, and O from the district's Restart and Recovery Plan are included in Policy 1648.



1648.02 REMOTE LEARNING OPTIONS FOR FAMILIES

On July 24, 2020, the New Jersey Governor and the Commissioner of Education published a supplemental guidance document titled “Clarifying Expectations Regarding Fulltime Remote Learning Options for Families 2020-2021” as a result of the COVID-19 pandemic. This supplemental guidance includes an additional “anticipated minimum standard,” as this phrase is used throughout “The Road Back: Restart and Recovery Plan for Education” (NJDOE Guidance). This additional “anticipated minimum standard” provides that, in addition to the methods and considerations explicitly referenced in the NJDOE Guidance for scheduling students for in-person, remote, or hybrid learning, families/guardians (hereinafter referred to as “parents”) may submit, and school districts shall accommodate, requests for full-time remote learning.

Requests for full-time remote learning may include any service or combination of services that would otherwise be delivered to students on an in-person schedule, which may be a hybrid schedule, such as instruction, behavioral and support services, special education, and related services. A parent may request some services be delivered entirely remotely, while other services follow the same schedule they otherwise would according to the provisions in the school district’s Restart and Recovery Plan (Plan) and Policy 1648.

A parent may contact the Principal or designee of the building the student would attend with any questions on: a request to transition from in-person services to full-time remote learning; a request to transition from full-time remote learning to in-person services; the procedures of this Policy; and/or any other information regarding the school district’s Plan and Policy 1648.

To ensure clarity and consistency in implementation of full-time remote learning, the Board of Education adopts this Policy that addresses the following:

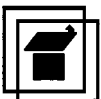
A. Unconditional Eligibility for Full-time Remote Learning

1. All students are eligible for full-time remote learning.
 - a. Eligibility for full-time remote learning cannot be conditioned on a parent demonstrating a risk of illness or other selective criteria.
 - b. Unconditional eligibility for full-time remote learning includes students with disabilities who attend in-district schools or receiving schools (county special services school districts, educational services commissions, jointure commissions, Katzenbach School for the Deaf, regional day schools, college operated programs, and approved private schools for students with disabilities).



B. Procedures for Submitting Full-time Remote Learning Requests

1. A parent may request a student receive full-time remote learning from the school district by submitting a written request to the Principal of the school building their child would attend. The written request shall be provided to the Principal at least five calendar days before the student is eligible to commence full-time remote learning in accordance with B.2. below.
 2. The student may only begin full-time remote learning at the beginning of the school year and at the beginning of a marking period.
 3. The written request for the student to receive full-time remote learning shall include:
 - a. The student's name, school, and grade;
 - b. The technology the student will be using to receive full-time remote learning, including the student's connectivity capabilities;
 - c. A request for any service or combination of services that would otherwise be delivered to the student on an in-person or hybrid schedule, such as instruction, behavioral and support services, special education, and related services;
 - d. For students with disabilities, the school district staff will determine if an Individualized Education Plan (IEP) meeting or an amendment to a student's IEP is needed for full-time remote learning; and
 - e. Any additional information the Principal or designee requests to ensure the student, when receiving remote learning, will receive the same quality and scope of instruction and other educational services as any other student otherwise participating in school district programs.
- (1) The documentation required by the school district to be provided in the parent's request for full-time remote learning shall not exclude any students from the school district's full-time remote learning option, but rather be limited to the minimum information needed to ensure proper recordkeeping and implementation of successful remote learning.



4. Upon receiving the written request, the Principal or designee may request additional information from the parent to assist the Principal or designee in providing the student the same quality and scope of instruction and other educational services as any other student otherwise participating in school district programs.
5. The Principal or designee will review the written request and upon satisfaction of the procedures outlined in this Policy, the Principal or designee will provide written approval of the parent's request for full-time remote learning.
 - a. In the event the request does not satisfy the procedures outlined in this Policy, the Principal or designee will notify the parent in writing of the issues that need to be addressed by the parent to satisfy the procedures outlined in this Policy.
6. The Principal's written approval of the request shall be provided to the parent within one calendar day of receiving the parent's written request.
 - a. The written approval will include the date the remote learning program will commence for the student in accordance with B.2. above.

C. Scope and Expectations of Full-Time Remote Learning

1. The scope and expectations of the school district's full-time remote learning program will include, but not be limited to, the following:
 - a. The length of the school day pursuant to N.J.A.C. 6A:32-8.3 and compliance with the Board's Attendance Policy and Regulation 5200; the provisions of the district's remote learning program outlined in the school district's Plan; and any other Board policies and regulations that govern the delivery of services to, and district expectations of, students participating in the remote learning program and their families;
 - b. The technology and the connectivity options to be used and/or provided to the student during remote learning; and
 - c. Any additional information the Principal or designee determines is needed to ensure the student, when receiving remote learning, will receive the same quality and scope of instruction and other educational services as any other student otherwise participating in school district programs (i.e. students participating in a hybrid model).



- (1) This includes, for example, access to standards-based instruction of the same quality and rigor as afforded all other students of the district, the district making its best effort to ensure that every student participating in remote learning has access to the requisite educational technology, and the provision of special education and related services to the greatest extent possible.
 - d. The school district will endeavor to provide supports and resources to assist parents, particularly those of younger students, with meeting the expectations of the school district's remote learning option.
- D. Procedures to Transition from Full-Time Remote Learning to In-Person Services
 1. A parent may request their student transition from full-time remote learning to in-person services, if in-person services are being provided, by submitting a written request to the Principal of the building the student will attend. This request must be submitted at least five calendar days before the student is eligible for in-person services.
 2. A student is only eligible to transition from full-time remote learning to in-person services commencing at the beginning of the school year and at the beginning of a marking period.
 3. The written request from the parent for the student to transition from full-time remote learning to in-person services shall include:
 - a. The student's name, school, and grade;
 - b. The in-person program may only commence for a student transitioning from full-time remote learning to in-person services in accordance with D.2. above; and
 - c. Any additional information the Principal or designee determines would be important on the student's transition from full-time remote learning to in-person services.
 4. A student previously approved for remote learning wanting to transition into the school district's in-person program must spend at least one marking period in remote learning before being eligible to transition into the school district's in-person program.



- a. This will allow parents to make the arrangements needed to effectively serve students' home learning needs and will support educators in ensuring continuity of instruction for the student.
 5. The Principal or designee will review the request for compliance with this Policy, and upon satisfaction of the procedures in this Policy, will provide the parent of the student a written approval of the student entering the school district's in-person program.
 - a. In the event the request does not satisfy the procedures outlined in this Policy, the Principal or designee will notify the parent in writing of the issues that need to be addressed by the parent to satisfy the procedures outlined in this Policy.
 6. Upon approval of the student's transition from full-time remote learning to in-person services, the school district will provide specific student and academic services to better assist parents anticipate their student's learning needs and help educators maintain continuity of services.
 7. School districts that offer Pre-K will consult their Pre-K curriculum providers regarding appropriate measures to assess a Pre-K student's learning progress during the transition from full-time remote learning to in-person learning.
- E. Reporting
1. To evaluate full-time remote learning, and to continue providing meaningful guidance for school districts, it will be important for the New Jersey Department to Education (NJDOE) to understand the extent and nature of demand for full-time remote learning around the State.
 - a. The school district will be expected to report to the NJDOE data regarding participation in full-time remote learning. Data will include the number of students participating in full-time remote learning by each of the following subgroups: economically disadvantaged; major racial and ethnic groups; students with disabilities; and English learners.
- F. Procedures for Communicating District Policy with Families
1. The school district will have clear and frequent communication with parents, in their home language, to help ensure this important flexibility is as readily accessible as possible. Communication must include, at a minimum, information regarding:



- a. Summaries of, and opportunities to review, the school district's full-time remote learning Policy/Plan;
- b. Procedures for submitting full-time remote learning requests in accordance with B. above;
- c. Scope and expectations of full-time remote learning in accordance with C. above;
- d. The transition from full-time remote learning to in-person services and vice-versa in accordance with B. and D. above; and
- e. The school district's procedures for ongoing communication with families and for addressing families' questions or concerns.

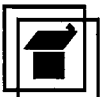
G. Home or Out-of-School Instruction

1. No provision of this Policy supersedes the district's requirements to provide home or out-of-school instruction for the reasons outlined in N.J.S.A. 18A, N.J.A.C. 6A, or any applicable Board policy unless determined otherwise by the Superintendent or designee.

[See the District's Restart and Recovery Plan – Appendix Q for the protocols/procedures for "Remote Learning Options for Families" which is outlined in the school district's Restart and Recovery Plan.]

New Jersey Department of Education Guidance Document:
"Clarifying Expectations Regarding Fulltime Remote Learning
Options for Families 2020-2021"

Adopted: 18 March 2021



1649 FEDERAL FAMILIES FIRST CORONAVIRUS (COVID-19) RESPONSE ACT

The Federal Families First Coronavirus (COVID-19) Response Act (FFCRA) includes the Emergency Family and Medical Leave Expansion Act (EFMLEA) and the Emergency Paid Sick Leave Act (EPSLA). The EFMLEA expands the Federal Family and Medical Leave Act (FMLA) and the EPSLA provides employees with paid sick leave for specified reasons related to COVID-19.

The provisions of the FFCRA shall apply from April 1, 2020 through December 31, 2020.

A. Emergency Family and Medical Leave Expansion Act (EFMLEA)

1. Definitions - For the purposes of the EFMLEA:

- a. “Eligible employee” means an employee who has been employed for at least thirty calendar days by the employer with respect to whom leave is requested.
- b. “Employer” means any employer with fewer than five hundred employees.
- c. “Qualifying need related to a public health emergency” means with respect to leave, the employee is unable to work (or telework) due to a need for leave to care for the son or daughter under eighteen years of age of such employee if the school or place of care has been closed, or the child care provider of such son or daughter is unavailable, due to a public health emergency.
- d. “Public Health Emergency” means an emergency with respect to COVID-19 declared by a Federal, State, or local authority.
- e. “Child care provider” means a provider who receives compensation for providing child care services on a regular basis, including an ‘eligible child care provider’ (as defined in section 658P of the Child Care and Development Block Grant Act of 1990 (42 U.S.C. 9858n)).



- f. “School” means an ‘elementary school’ or ‘secondary school’ as such terms are defined in section 8101 of the Elementary and Secondary Education Act of 1965 (20 U.S.C. 7801).

2. Relationship to Paid EFMLEA Leave

The FFCRA includes the Emergency Family and Medical Leave Expansion Act (EFMLEA) that amended the Federal Family and Medical Leave Act of 1993 (29 U.S.C. 2611 et seq. to provide leave to an eligible employee because of a qualifying need related to a public health emergency with respect to COVID-19 - (U.S.C. 2612(a)(1)(F)).

a. Leave for Initial Ten Days

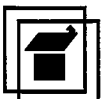
- (1) The first ten days of this FMLA leave for an eligible employee shall be unpaid.
- (2) If the first ten days of this FMLA leave are unpaid, an employee may elect to substitute any accrued vacation leave, personal leave, or emergency paid sick leave provided by the EPSLA for the initial ten days under the EFMLEA in accordance with 29 U.S.C. 2612(d)(2)(B).
- (3) An employee may not use sick leave under N.J.S.A. 18A:30-1 for a qualifying need related to a public health emergency. However, an employee receiving sick leave under the provisions of N.J.S.A. 18A:30-1 may only use sick leave because of personal disability due to illness or injury, or because the employee has been excluded from school by the school district’s medical authorities on account of contagious disease or of being quarantined for such a disease in his or her immediate household.

b. Paid Leave for Subsequent Days

- (1) An employer shall provide paid leave for each day of leave under the EFMLEA that an employee takes after taking such leave for ten days.



- (2) The paid leave for an employee shall be calculated based on:
 - (a) An amount that is not less than two-thirds of an employee's regular rate of pay (as determined under section 7(e) of the Fair Labor Standards Act of 1938 (29 U.S.C. 207(e)); and
 - (b) The number of hours the employee would otherwise be normally scheduled to work (or the number of hours calculated under A.2.(b)(4) below).
 - (3) In no event shall such paid leave exceed \$200.00 per day and \$10,000.00 in the aggregate.
 - (4) Varying Schedule Hours Calculation – In the case of an employee whose schedule varies from week to week to such an extent that an employer is unable to determine with certainty the number of hours the employee would have worked if such employee had not taken leave under the EFMLEA, the employer shall use the following in place of such number:
 - (a) Subject to A.2.b.(4)(b) below, a number equal to the average number of hours that the employee was scheduled per day over the six-month period ending on the date on which the employee takes such leave, including hours for which the employee took leave of any type.
 - (b) If the employee did not work over such period, the reasonable expectation of the employee at the time of hiring of the average number of hours per day that the employee would normally be scheduled to work.
- c. Employee Notice to Employer
- (1) In any case where the necessity for leave under the EFMLEA for the purpose of a qualifying need related to a public health emergency is foreseeable, an employee shall provide the employer with such notice of leave as is practicable.



- (a) A request for such leave that is foreseeable shall be submitted to the Chief School Administrator prior to commencing the leave.
 - (b) A need for such leave that is not foreseeable shall be submitted to the Chief School Administrator within one business day of the first day of the leave being taken by the employee.
 - (c) The employee shall provide to the Chief School Administrator the name of the employee's child, the name of the school, place of care, or child care provider that has closed or become unavailable, and a statement that no other suitable person is available to care for the child.
- d. Restoration to Position
 - (1) The employee shall be restored to the same or equivalent position held by the employee when the leave commenced pursuant to 29 CFR 825.214. The requirement to restore the employee to the same or equivalent position held when the leave commenced does not apply to an employer who employs fewer than twenty-five employees if all four of the following conditions are met:
 - (a) The employee takes leave under the EFMLEA.
 - (b) The position held by the employee when the leave commenced does not exist due to economic conditions or other changes in operating conditions of the employer:
 - i. That affect employment; and
 - ii. Are caused by a public health emergency during the period of leave.
 - (c) The employer makes reasonable efforts to restore the employee to a position equivalent to the position the employee held when the leave commenced with equivalent employment benefits, pay, and other terms and conditions of employment.



- (d) If the reasonable efforts of the employer under A.2.d.(1)(c) above fail, the employer makes reasonable efforts during the period described in A.2.d.(2) below to contact the employee if an equivalent position described in A.2.d.(1)(c) above becomes available.

(2) Contact Period

- (a) The period described under A.2.d. above is the one-year period beginning on the earlier of:
 - i. The date on which the qualifying need related to a public health emergency concludes; or
 - ii. The date that is twelve weeks after the date on which the employee's leave under the EFMLEA commences.

B. Emergency Paid Sick Leave Act (EPSLA)

The FFCRA includes the EPSLA, which provides paid sick time to an employee to the extent the employee is unable to work or (telework) due to a need related to COVID-19. The paid sick time provided by the EPSLA and outlined in B.1. below cannot be taken with any other paid leave time provided by the employer.

1. Definitions

a. For purposes of the EPSLA and this Policy:

- (1) "Employee" means an individual who is employed by a private employer with fewer than five hundred employees and public employers with at least one employee.
- (2) "Employer" means a private person or entity that employs fewer than five hundred employees and public employers that employ at least one employee.



- (a) “Covered employer” includes any person engaged in commerce or in any industry or activity affecting commerce that:
 - i. In the case of a private entity or individual, employs fewer than five hundred employees; and
 - ii. In the case of a public agency or any other entity that is not a private entity or individual, employs one or more employees.
- (b) “Covered employer” also includes:
 - i. Any person acting directly or indirectly in the interest of an employer in relation to an employee (within the meaning of such phrase in section 3(d) of the Fair Labor Standards Act of 1938 (29 U.S.C. 203(d)); and
 - ii. Any successor in interest of an employer; and any “public agency”, as defined in section 3(x) of the Fair Labor Standards Act of 1938 (29 U.S.C. 203(x)).
- (c) “Covered employer” also includes any “public agency” as defined in section 3(x) of the Fair Labor Standards Act of 1938 (29 U.S.C. 203(x)).
- (3) “Employ” and “State” have the meanings given such terms in section 3 of the Fair Labor Standards Act of 1938 (29 U.S.C. 203).
- (4) “Health care provider” and “son or daughter” have the meanings given such terms in section 101 of the Family and Medical Leave Act of 1993 (29 U.S.C. 2611).
- (5) “Paid sick time” means an increment of compensated leave that:



- (a) Is provided by an employer for use during an absence from employment for a reason described in any paragraph of B.2.a. below; and
- (b) Is calculated based on the employee's required compensation under B.1.a.(6) below and the number of hours the employee would otherwise be normally scheduled to work (or the number of hours calculated under (B.1.a.(7) below), except that in no event shall such paid sick time exceed:
 - i. \$511.00 per day and \$5,110.00 in the aggregate for a use described in B.2.a.(1), (2), or (3) below; and
 - ii. \$200.00 per day and \$2,000.00 in the aggregate for a use described in B.2.a.(4), (5), or (6) below.
- (6) "Required Compensation" subject to B.1.a.(5)(b) above, the employee's "required compensation" shall be not less than the greater of the following:
 - (a) The employee's regular rate of pay (as determined under section 7(e) of the Fair Labor Standards Act of 1938 (29 U.S.C. 207(e)).
 - (b) The minimum wage rate in effect under section 6(a)(1) of the Fair Labor Standards Act of 1938 (29 U.S.C. 206(a)(1)).
 - (c) The minimum wage rate in effect for such employee in the applicable State or locality, whichever is greater, in which the employee is employed.

Subject to B.1.a.(5)(b) above, with respect to any paid sick time provided for any use described in B.2.a.(4), (5), or (6) below, the employee's required compensation shall be two-thirds of the amount described in B.1.a.(6) above.



- (7) “Varying Schedule Hours Calculation” means in the case of a part-time employee described in B.3.b.(2) below whose schedule varies from week to week to such an extent that an employer is unable to determine with certainty the number of hours the employee would have worked if such employee had not taken paid sick time under B.2.a. below, the employer shall use the following in place of such number:
 - (a) Subject to clause B.1.a.(7)(b) below, a number equal to the average number of hours that the employee was scheduled per day over the six-month period ending on the date on which the employee takes the paid sick time, including hours for which the employee took leave of any type.
 - (b) If the employee did not work over such period, the reasonable expectation of the employee at the time of hiring of the average number of hours per day that the employee would normally be scheduled to work.

2. Paid Sick Leave Requirement

- a. An employer shall provide to each employee employed by the employer paid sick time to the extent that the employee is unable to work (or telework) due to a need for leave because:
 - (1) The employee is subject to a Federal, State, or local quarantine or isolation order related to COVID-19.
 - (2) The employee has been advised by a health care provider to self-quarantine due to concerns related to COVID-19.
 - (3) The employee is experiencing symptoms of COVID-19 and seeking a medical diagnosis.
 - (4) The employee is caring for an individual who is subject to an order as described in B.2.a.(1) above or has been advised as described in B.2.a.(2) above.



- (5) The employee is caring for a son or daughter of such employee if the school or place of care of the son or daughter has been closed, or the child care provider of such son or daughter is unavailable, due to COVID-19 precautions.
- (6) The employee is experiencing any other substantially similar condition specified by the Secretary of Health and Human Services in consultation with the Secretary of the Treasury and the Secretary of Labor.

3. Duration of Paid Sick Time

- a. An employee shall be entitled to paid sick time for an amount of hours determined under B.3.b. below.
- b. The amount of hours of paid sick time to which an employee is entitled shall be as follows:
 - (1) For full-time employees, eighty hours.
 - (2) For part-time employees, a number of hours equal to the number of hours that such employee works, on average, over a two-week period.
- c. Paid sick time under the EPSLA shall not carry over from one year to the next.

4. Employer's Termination of Paid Sick Time

- a. Paid sick time provided to an employee under the EPSLA shall cease beginning with the employee's next scheduled work shift immediately following the termination of the need for paid sick time under B.2.a. above.

5. Prohibition

- a. An employer may not require, as a condition of providing paid sick time under the EPSLA, that the employee involved search for or find a replacement employee to cover the hours during which the employee is using paid sick time.



6. Use of Paid Sick Time

- a. The paid sick time under B.2.a. above shall be available for immediate use by the employee for the purposes described in the EPSLA, regardless of how long the employee has been employed by an employer.
- b. Sequencing Leave Time
 - (1) An employee may first use the paid sick time under B.2.a. above for the purposes described in the EPSLA.
 - (2) An employer may not require an employee to use other paid leave provided by the employer to the employee before the employee uses the paid sick time under B.2.a. above.

7. Notice

- a. Each employer shall post and keep posted, in conspicuous places on the premises of the employer where notices to employees are customarily posted, a notice, to be prepared or approved by the Secretary of Labor, of the requirements described in the EPSLA.
- b. Not later than seven days after the date of enactment of this Act, the Secretary of Labor shall make publicly available a model of a notice that meets the requirements of B.7.a. above.

8. Prohibited Acts

- a. It shall be unlawful for any employer to discharge, discipline, or in any other manner discriminate against any employee who:
 - (1) Takes leave in accordance with the EPSLA; and
 - (2) Has filed any complaint or instituted or caused to be instituted any proceeding under or related to the EPSLA (including a proceeding that seeks enforcement of the EPSLA), or has testified or is about to testify in any such proceeding.



9. Enforcement

- a. Unpaid Sick Leave - An employer who violates B.2. through B.6. of this Policy shall:
 - (1) Be considered to have failed to pay minimum wages in violation of section 6 of the Fair Labor Standards Act of 1938 (29 U.S.C. 206); and
 - (2) Be subject to the penalties described in sections 16 and 17 of the Fair Labor Standards Act of 1938 (29 U.S.C. 216; 217) with respect to such violation.
- b. Unlawful Termination - An employer who willfully violates B.8. above shall:
 - (1) Be considered to be in violation of section 15(a)(3) of the Fair Labor Standards Act of 1938 (29 U.S.C. 215(a)(3)); and
 - (2) Be subject to the penalties described in sections 16 and 17 of the Fair Labor Standards Act of 1938 (29 U.S.C. 216; 217) with respect to such violation.

10. Rules of Construction

- a. Nothing in the EPSLA shall be construed:
 - (1) To in any way diminish the rights or benefits that an employee is entitled to under any:
 - (a) Other Federal, State, or local law;
 - (b) Collective bargaining agreement; or
 - (c) Existing employer policy; or
 - (2) To require financial or other reimbursement to an employee from an employer upon the employee's termination, resignation, retirement, or other separation from employment for paid sick time under the EPSLA that has not been used by such employee.



11. Guidelines

- a. Not later than fifteen days after the date of the enactment of the EPSLA, the Secretary of Labor shall issue guidelines to assist employers in calculating the amount of paid sick time under the EPSLA.

12. Reasonable Notice

- a. After the first workday (or portion thereof) an employee receives paid sick time under the EPSLA, an employer may require the employee to follow reasonable notice procedures in order to continue receiving such paid sick time.
- b. The request for such leave shall be submitted to the Chief School Administrator, who may request documentation from the employee in support of the emergency paid sick leave.
- c. The documentation shall include a signed statement containing the following information: the employee's name; the date(s) for which leave is requested; the COVID-19 qualifying reason for leave; and a statement representing that the employee is unable to work or telework because of the COVID-19 qualifying reason.
- d. An employee requesting to take emergency paid sick leave under the EPSLA or the EFMLEA to care for his or her child must provide the following information: the name of the child being care for; the name of the school; place of care; or child care provider that closed or became unavailable due to COVID-19 reasons; and a statement representing that no other suitable person is available to care for the child during the period of requested leave.

13. Regulatory Authorities

- a. The Secretary of Labor shall have the authority to issue regulations for good cause under sections 553(b)(B) and 553(d)(A) of Title 5, United States Code:
 - (1) To exempt small businesses with fewer than fifty employees from the requirements of B.2.a.5. when the imposition of such requirements would jeopardize the viability of the business as a going concern; and



- (2) As necessary, to carry out the purposes of the EPSLA, including to ensure consistency between the EPSLA and Division C and Division G of the FFCRA.

H.R. 6201: Families First Coronavirus (COVID-19) Response Act
N.J.S.A. 18A:30-1

Adopted: 18 March 2021

